

[http:// www.efvalve.com](http://www.efvalve.com)
Email: chisin@efvalve.com

• TANKEQUIPMENT • MANWAY



温州一方阀门有限公司

WENZHOU EFUN VALVE CO.,LTD

No.838,Road 9,Avenue 2,Binhai Park,ETDZ,Wenzhou,China

Tel:+86-577-86910226

Fax:+86-577-86910225

Email: chisin@efvalve.com

Skype:chisin-efun

Whatsapp:+86-13388551166

Web: www.efvalve.com

安全 · 高效 · 一方 “智” 造

IT IS SAFE

EFUN RELIABLE AND INTELLIGENT



企业介绍 Brief Introduction



温州一方阀门有限公司，是生产高精度流体设备公司。公司专业生产啤酒发酵罐罐顶卫生组合件、小锥体、罐底卫生组件、糖化设备相关的配件、接管板等系列。目前已形成 GB、DIN、ISO、IDF、SMS、3A 等多种标准的手动、气动、电动系列卫生蝶阀，薄壁镜面卫生管件等产品。已为全国众多啤酒公司使用，深受用户一致好评。

坚持质量求生存是本公司的宗旨，引进日本进口数控机床加工产品，使一方牌产品各项性能一直走在同行的前列，缩短了同进口设备及附件质量上的差距。

公司本着诚实信用，严格质量，不断开拓新产品、新技术开发。继续为啤酒、饮料、乳品、制药等行业服务。

WENZHOU EFUN VALVE CO., LTD. is a company, specializing in manufacturing, researching and developing sanitary tank assemblies, valves and pipe fittings mainly used in beer, dairy, food, beverage and pharmaceutical industries.

We produce the goods in strict accordance with standard DIN, SMS, 3A, BPE and ISO. We can also manufacture the products according to your requirements. Our products have the advantages of rustproof, corrosion resistance, durable, fine finish and dimensional accurate.

Through 20 years' development, now we have many highly-skilled engineers, workers and rich experienced salesmen and own a complete set of machines like CNC, kinds of welding&polishing machines, big hydraulic press etc. Our products have got ISO9001 and FDA certification and the quality meets GMP standard, which have gained highly praises from our customers in America, Canada, New Zealand, Australia, Norway, France, Holland, Japan and South Korea, India etc.

We, EFUN, will continue to emphasize the business idea that "people first" and adhere to the purpose that "survive with quality" and forge ahead.

设计部 Design Department



质检部 Quality Inspection Department





人孔及罐用设备

TANK EQUIPMENT

P09-P91



- 09 WZA Round Outward Manway With Pressure
- 13 WZB Round Outward Manway
- 25 WZB-B Round Outward Manway
- 35 WZB-C Round Outward Manway
- 43 WZC Oval Inward Manway
- 55 WZC-B Oval Inward Manway with Bevel Edge
- 57 WZD Round Outward Manway With Sight Glass
- 59 WZE Rectangular Manway With Two Intersectant Arms
- 63 WZE-B Rectangular Manway With One Intersectant Arms
- 67 WZE-C Rectangular Manway With One Intersectant Arms
- 71 WZF shell manway
- 75 WZG Sight Glass Manway
- 80 GAZ-2S Tank-top Safety Sanitary Assembly
- 86 SVB Sanitary Small Cone of Tank

WZA

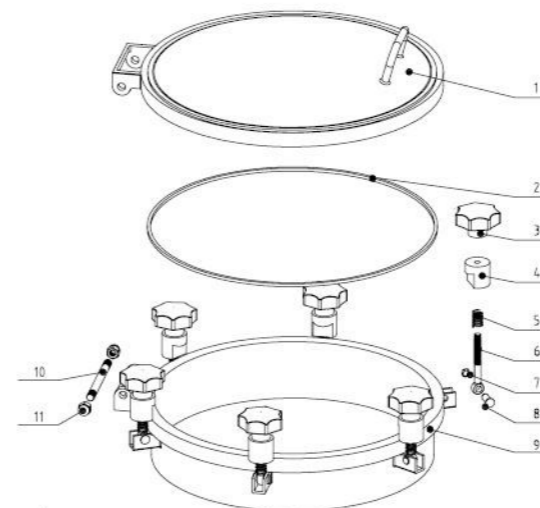
Round Outward Manway With Pressure

How To Order

Type	Size	Material	Inner Surf	Outer Surf
WZA	DN400	304	0.8µm-0.4µm	0.8µm-0.4µm
Qty	Handwheel-Num	Height	Gasket	Pressure
20	M12-6 Plastic	100mm	Silicone	1-3bar



Exploded parts diagram

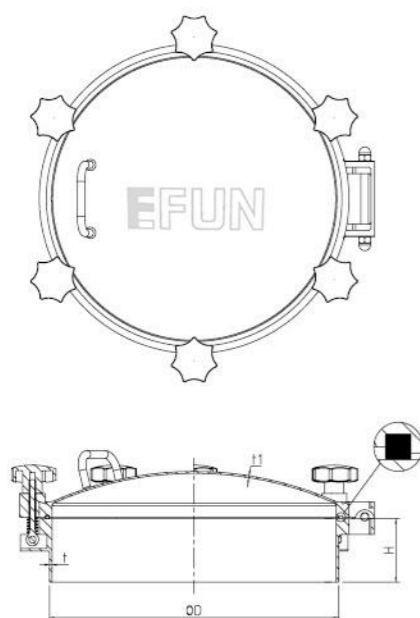


Technical requirements

- Gasket: Silicone/EPDM/NBR/FPM in accordance with FDA 177.2600.
- Material: 304(1.4301), 316L(1.4404)
- Internal surface: 0.8µm-0.4µm
- Outside surface: Mirror polished, Matte, sand-blasting finished.

Ltem	Description	Material	Qty
1	Cover	1.4301/1.4404	1
2	Gasket	Silicon	1
3	Handle	Plastic/T304	6
4	Hub	T304	6
5	Spring	T304	6
6	Swing Bolt	304	6
7	Lock Ring	T304	6
8	Pin	T304	6
9	Frame	1.4301/1.4404	1
10	Screw	T304	1
11	Nut	T304	2

Dimensions



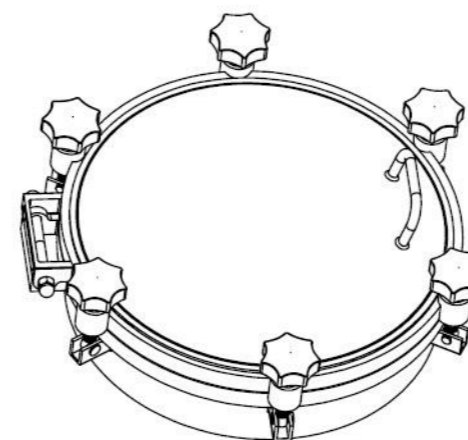
Standard size

At temperature 50°C/122°F

Size	OD mm	t mm	H mm	t1 mm	Handwheel-Num	Pres (Bar)
DN200	Ø206	3	80-200	3	4	1-3
DN300	Ø306	3	80-200	3	4	1-3
DN350	Ø356	3	80-200	3	5	1-3
DN400	Ø406	3	80-200	3	6	1-3
DN430	Ø436	3	80-200	3	6	1-3
DN450	Ø456	3	80-200	3	6	1-3
DN500	Ø508	4	80-200	3	6	1-3
DN550	Ø558	4	80-200	3	6	1-3
DN600	Ø608	4	80-200	3	8	1-3

IF YOU WANT TO CHECK FOR MORE DETAILS
PLEASE CHECK THE FOLLOWING DRAWING
x1BAR ≈14.5PSI≈0.1MPA

Schematic diagram



GASKET

Material	Color
Silicon	White
EPDM	Black
FPM	Black

Options

- Stainless steel finishes
- Polished with RA(µ)
- Bead blasted
- Pickled: on request
- Electro polished

WZA-2

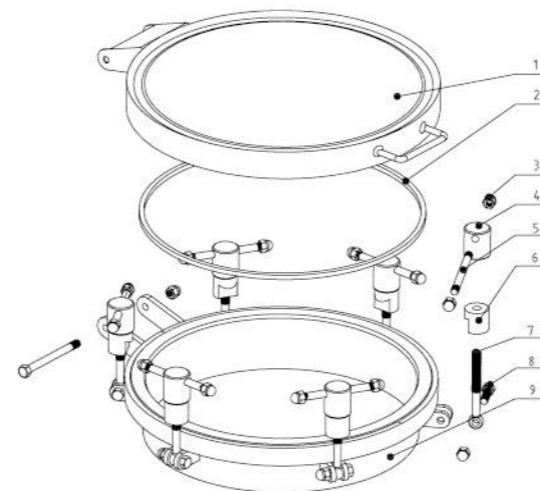
Round Outward Manway With Pressure

How To Order

Type	Size	Material	Inner Surf	Outer Surf
WZA-2	DN400	304	0.8µm-0.4µm	0.8µm-0.4µm
Qty	Handwheel-Num	Height	Gasket	Pressure
20	M16-6 Plastic	100mm	Silicone	3-6 bar



Exploded parts diagram

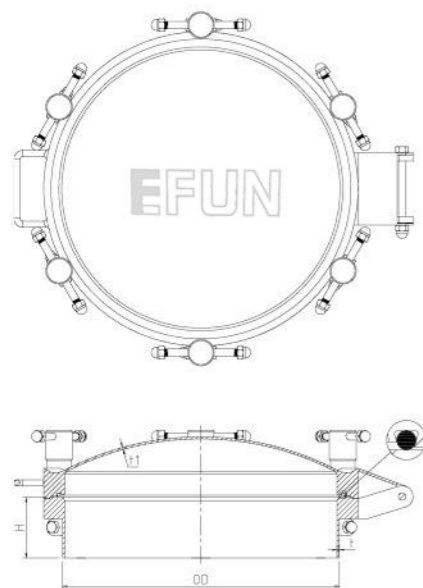


Technical requirements

- Gasket: Silicone/EPDM/NBR/FPM in accordance with FDA 177.2600.
- Material: 304(1.4301), 316L(1.4404)
- Internal surface: 0.8µm-0.4µm
- Outside surface: Mirror polished, Matte, sand-blasting finished.

Ltem	Description	Material	Qty
1	Cover	1.4301/1.4404	1
2	Gasket	Silicon	1
3	Nut	T304	19
4	Handle part	T304	6
5	Screw	T304	6
6	Hub	T304	6
7	Swing Bolt	304	6
8	Screw	T304	7
9	Frame	1.4301/1.4404	1

Dimensions



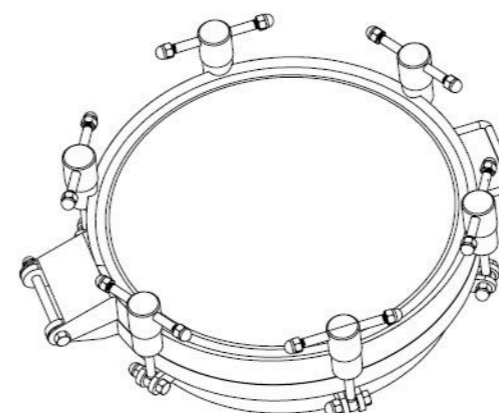
Standard size

At temperature 50°C/122°F

Size	OD mm	t mm	H mm	t1 mm	Handwheel-Num	Pres (Bar)
DN200	Ø208	4	80-200	4	4	3-6
DN300	Ø308	4	80-200	4	4	3-6
DN350	Ø358	4	80-200	4	5	3-6
DN400	Ø408	4	80-200	4	6	3-6
DN430	Ø438	4	80-200	4	6	3-6
DN450	Ø458	4	80-200	4	6	3-6
DN500	Ø510	5	80-200	4	6	3-6
DN550	Ø560	5	80-200	4	6	3-6
DN600	Ø610	5	80-200	4	8	3-6

IF YOU WANT TO CHECK FOR MORE DETAILS
PLEASE CHECK THE FOLLOWING DRAWING
x1BAR ≈14.5PSI≈0.1MPA

Schematic diagram



GASKET	
Material	Color
Silicon	White
EPDM	Black
FPM	Black

Options

Stainless steel finishes
Polished with RA(µ)
Bead blasted
Pickled: on request
Electro polished

WZB

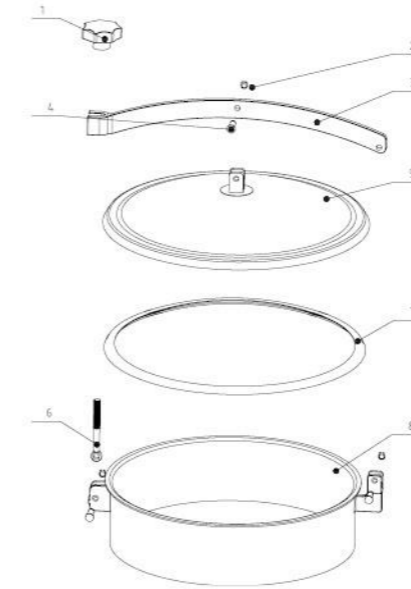
Round Outward Manway

How To Order

Type	Size	Material	Inner Surf	Outer Surf
WZB	Ø400	304	0.8µm-0.4µm	0.8µm-0.4µm
Qty	Handwheel-Num	Height	Gasket	Pressure
20	1 Plastic	100mm	Silicone	0-1 bar



Exploded parts diagram

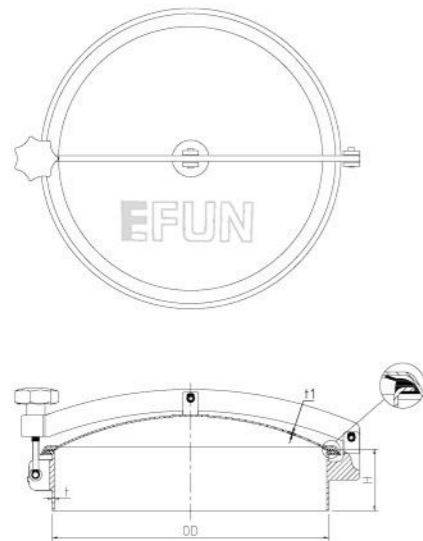


Technical requirements

- Gasket: Silicone/EPDM/NBR/FPM in accordance with FDA 177.2600.
- Material: 304(1.4301), 316L(1.4404)
- Internal surface: 0.8µm-0.4µm
- Outside surface: Mirror polished, Matte, sand-blasting finished.

Ltem	Description	Material	Qty
1	Handle	Plastic/T304	1
2	Lock Ring	T304	3
3	Bracket	304	1
4	Pin	T304	3
5	Cover	1.4301/1.4404	1
6	Swing Bolt	T304	1
7	Gasket	Silicon	1
8	Frame	1.4301/1.4404	1

Dimensions



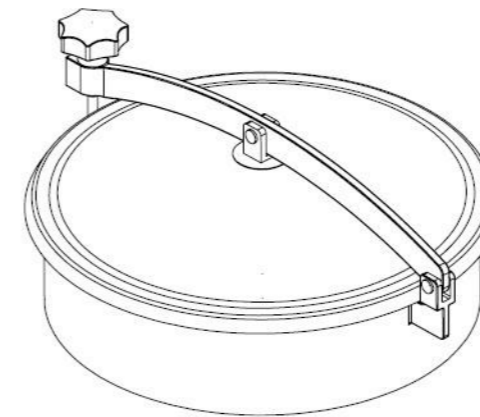
Standard size

At temperature 50°C/122°F

Size	OD mm	t mm	H mm	t1 mm	Pres (Bar)
Ø200	Ø200	2.5	80-200	2	0-1
Ø219	Ø219	2.5	80-200	2	0-1
Ø250	Ø250	2.5	80-200	2	0-1
Ø300	Ø300	2.5	80-200	2	0-1
Ø350	Ø350	3	80-200	2.5	0-1
Ø400	Ø400	3	80-200	2.5	0-1
Ø430	Ø430	3	80-200	2.5	0-1
Ø450	Ø450	3	80-200	2.5	0-1
Ø500	Ø500	3	80-200	2.5	0-1
Ø600	Ø600	4	80-200	3	0-1
Ø700	Ø700	4	80-200	3	0-1

IF YOU WANT TO CHECK FOR MORE DETAILS
PLEASE CHECK THE FOLLOWING DRAWING
x1BAR ≈14.5PSI≈0.1MPA

Schematic diagram



GASKET	
Material	Color
Silicon	White
EPDM	Black
FPM	Black

Options

Stainless steel finishes
Polished with RA(µ)
Bead blasted
Pickled: on request
Electro polished

WZB-2

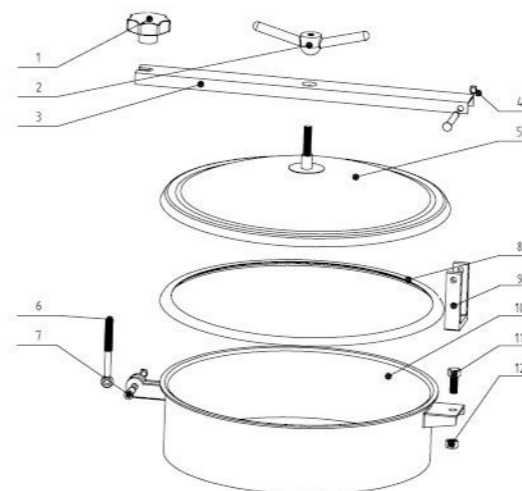
Round Outward Manway

How To Order

Type	Size	Material	Inner Surf	Outer Surf
WZB-2	Ø400	304	0.8µm-0.4µm	0.8µm-0.4µm
Qty	Handwheel-Num	Height	Gasket	Pressure
20	1 Plastic	100mm	Silicone	0-1 bar



Exploded parts diagram

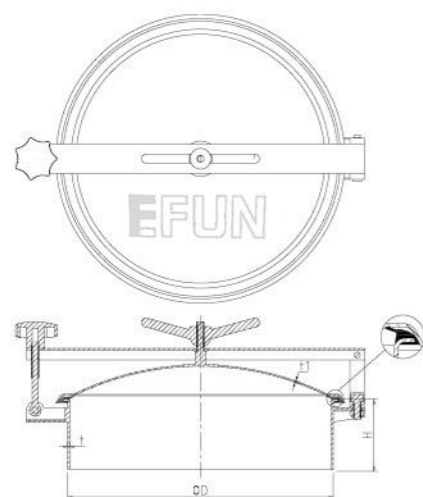


Technical requirements

- Gasket: Silicone/EPDM/NBR/FPM in accordance with FDA 177.2600.
- Material: 304(1.4301), 316L(1.4404)
- Internal surface: 0.8µm-0.4µm
- Outside surface: Mirror polished, Matte, sand-blasting finished.

Ltem	Description	Material	Qty
1	Handle	Plastic/T304	1
2	Nut	T304	1
3	Bracket	T304	1
4	Lock ring	T304	2
5	Cover	1.4301/1.4404	1
6	Swing bolt	304	1
7	Pin	T304	1
8	Gasket	Silicone	1
9	Back hinge support	T304	1
10	Frame	1.4301/1.4404	1
11	Screw	T304	1
12	Nut	T304	1

Dimensions



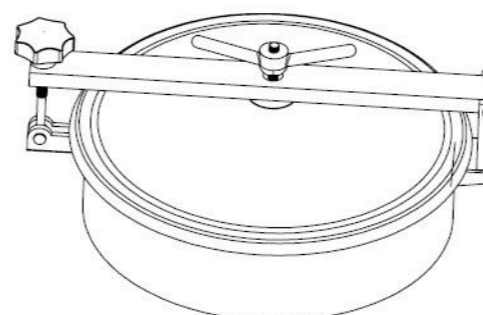
Standard size

At temperature 50°C/122°F

Size	OD mm	t mm	H mm	t1 mm	Pres (Bar)
Ø200	Ø200	2.5	80-200	2	0-1
Ø219	Ø219	2.5	80-200	2	0-1
Ø250	Ø250	2.5	80-200	2	0-1
Ø300	Ø300	2.5	80-200	2	0-1
Ø350	Ø350	3	80-200	2.5	0-1
Ø400	Ø400	3	80-200	2.5	0-1
Ø430	Ø430	3	80-200	2.5	0-1
Ø450	Ø450	3	80-200	2.5	0-1
Ø500	Ø500	3	80-200	2.5	0-1
Ø600	Ø600	4	80-200	3	0-1

IF YOU WANT TO CHECK FOR MORE DETAILS
PLEASE CHECK THE FOLLOWING DRAWING
x1BAR ≈14.5PSI≈0.1MPA

Schematic diagram



GASKET

Material	Color
Silicon	White
EPDM	Black
FPM	Black

Options

Stainless steel finishes
Polished with RA(µ)
Bead blasted
Pickled: on request
Electro polished

WZB-3

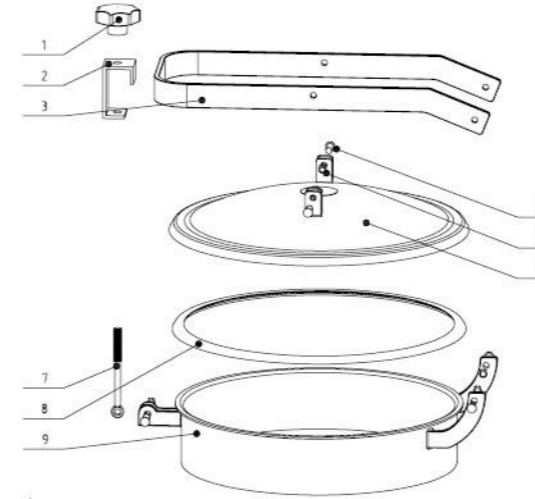
Round Outward Manway

How To Order

Type	Size	Material	Inner Surf	Outer Surf
WZB-3	Ø400	304	0.8µm-0.4µm	0.8µm-0.4µm
Qty	Handwheel-Num	Height	Gasket	Pressure
20	1 Plastic	100mm	Silicone	0-1 bar



Exploded parts diagram

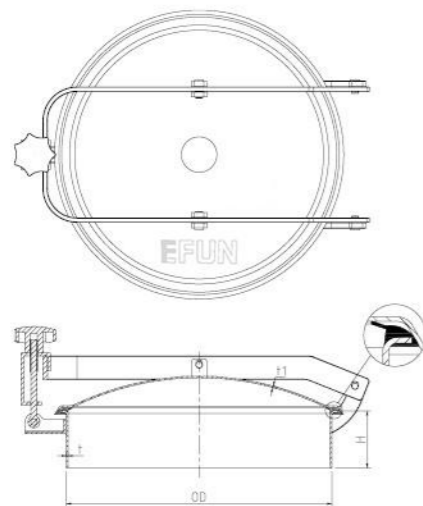


Technical requirements

- Gasket: Silicone/EPDM/NBR/FPM in accordance with FDA 177.2600.
- Material: 304(1.4301), 316L(1.4404)
- Internal surface: 0.8µm-0.4µm
- Outside surface: Mirror polished, Matte, sand-blasting finished.

Ltem	Description	Material	Qty
1	Handle	Plastic/T304	1
2	Front hinge support	T304	1
3	Bracket	304	1
4	Pin	T304	5
5	Lock ring	T304	5
6	Cover	1.4301/1.4404	1
7	Swing bolt	304	1
8	Gasket	Silicone	1
9	Frame	1.4301/1.4404	1

Dimensions



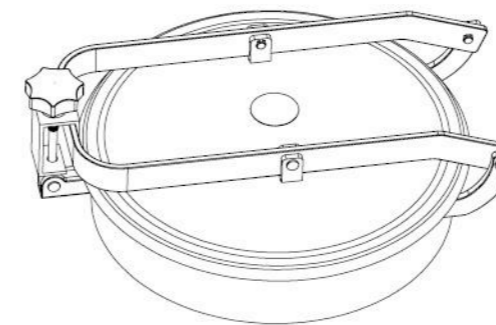
Standard size

At temperature 50°C/122°F

Size	OD mm	t mm	H mm	t1 mm	Pres (Bar)
Ø200	Ø200	2.5	80-200	2	0-1
Ø219	Ø219	2.5	80-200	2	0-1
Ø250	Ø250	2.5	80-200	2	0-1
Ø300	Ø300	2.5	80-200	2	0-1
Ø350	Ø350	3	80-200	2.5	0-1
Ø400	Ø400	3	80-200	2.5	0-1
Ø430	Ø430	3	80-200	2.5	0-1
Ø450	Ø450	3	80-200	2.5	0-1
Ø500	Ø500	3	80-200	2.5	0-1
Ø600	Ø600	4	80-200	3	0-1

IF YOU WANT TO CHECK FOR MORE DETAILS
PLEASE CHECK THE FOLLOWING DRAWING
x1BAR ≈14.5PSI≈0.1MPA

Schematic diagram



GASKET	
Material	Color
Silicon	White
EPDM	Black
FPM	Black

Options

- Stainless steel finishes
- Polished with RA(µ)
- Bead blasted
- Pickled: on request
- Electro polished

WZB-4

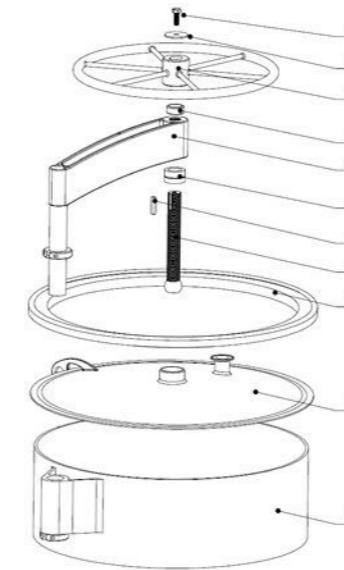
Round Outward Manway

How To Order

Type	Size	Material	Inner Surf	Outer Surf
WZB-4	DN600	304	0.8µm-0.4µm	0.8µm-0.4µm
Qty	Handwheel-Num	Height	Gasket	Pressure
20	1 Plastic	200mm	Silicone	0-1 bar



Exploded parts diagram

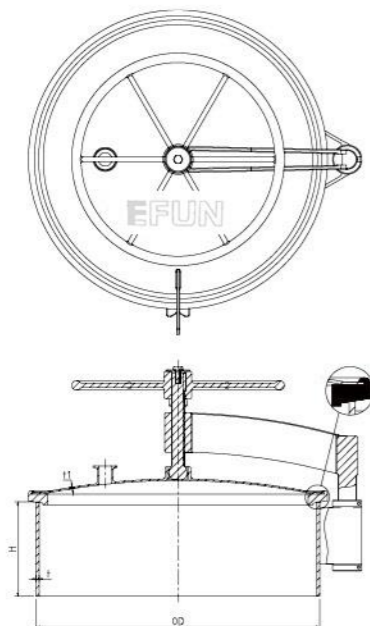


Technical requirements

- Gasket: Silicone/EPDM/NBR/FPM in accordance with FDA 177.2600.
- Material: 304(1.4301), 316L(1.4404)
- Internal surface: 0.8µm-0.4µm
- Outside surface: Mirror polished, Matte, sand-blasting finished.

Ltem	Description	Material	Qty
1	Screw	T304	1
2	Plate	T304	1
3	handle	T304	1
4	Bracket	T304	3
5	Clamp ring	T304	1
6	Axle sleeve	T304	1
7	Flat key	T304	1
8	Screw	T304	1
9	Gasket	Silicone	1
10	Cover	1.4301/1.4404	1
11	Frame	1.4301/1.4404	1

Dimensions



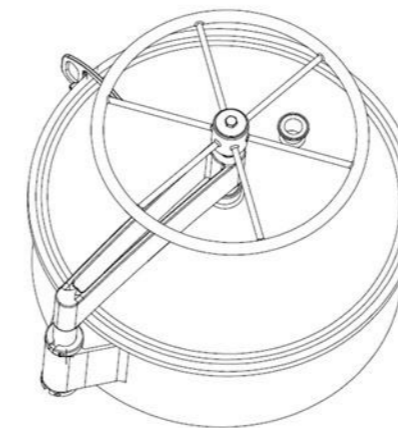
Standard size

At temperature 50°C/122°F

Size	OD mm	t mm	H mm	t1 mm	Pres (Bar)
DN600	Ø612	6	200	3	0-1
DN800	Ø812	6	200	3	0-1
DN900	Ø912	6	200	3	0-1

IF YOU WANT TO CHECK FOR MORE DETAILS
PLEASE CHECK THE FOLLOWING DRAWING
x1BAR ≈14.5PSI≈0.1MPA

Schematic diagram



GASKET	
Material	Color
Silicon	White
EPDM	Black
FPM	Black

Options

Stainless steel finishes

Polished with RA(µ)

Bead blasted

Pickled: on request

Electro polished

WZB-5

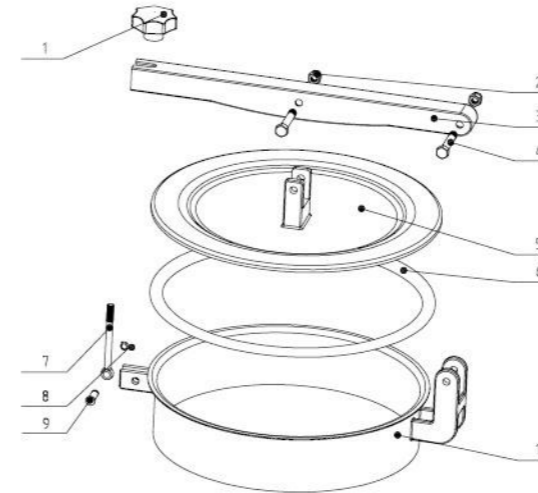
Round Outward Manway

How To Order

Type	Size	Material	Inner Surf	Outer Surf
WZB-5	Ø400	304	0.8µm-0.4µm	0.8µm-0.4µm
Qty	Handwheel-Num	Height	Gasket	Pressure
20	1 Plastic	100mm	Silicone	-1~+1 bar



Exploded parts diagram

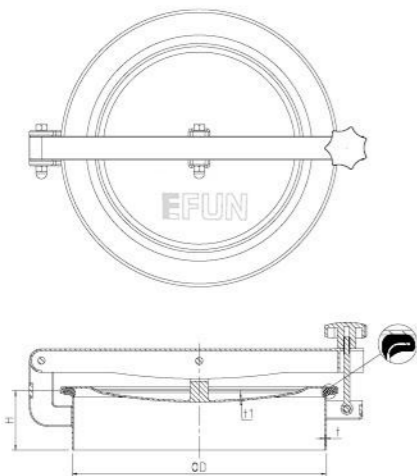


Technical requirements

- Gasket: Silicone/EPDM/NBR/FPM in accordance with FDA 177.2600.
- Material: 304(1.4301), 316L(1.4404)
- Internal surface: 0.8µm-0.4µm
- Outside surface: Mirror polished, Matte, sand-blasting finished.

Ltem	Description	Material	Qty
1	handle	Plastic/T304	1
2	Nut	T304	2
3	Bracket	304	1
4	Screw	T304	2
5	Cover	1.4301/1.4404	1
6	Gasket	Silicone	1
7	Swing bolt	T304	1
8	Lock ring	T304	1
9	Pin	T304	1
10	Frame	1.4301/1.4404	1

Dimensions



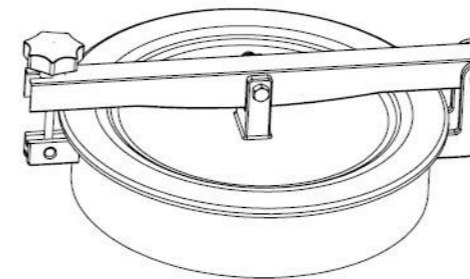
Standard size

At temperature 50°C/122°F

Size	OD mm	t mm	H mm	t1 mm	Pres (Bar)
Ø300	Ø300	2.5	80-200	2	-1~+1
Ø350	Ø350	3	80-200	2	-1~+1
Ø400	Ø400	3	80-200	2.5	-1~+1
Ø430	Ø430	3	80-200	2.5	-1~+1
Ø450	Ø450	3	80-200	2.5	-1~+1
Ø500	Ø500	4	80-200	3	-1~+1

IF YOU WANT TO CHECK FOR MORE DETAILS
PLEASE CHECK THE FOLLOWING DRAWING
x1BAR ≈14.5PSI≈0.1MPA

Schematic diagram



GASKET

Material	Color
Silicon	White
EPDM	Black
FPM	Black

Options

Stainless steel finishes

Polished with RA(µ)

Bead blasted

Pickled: on request

Electro polished

WZB-6

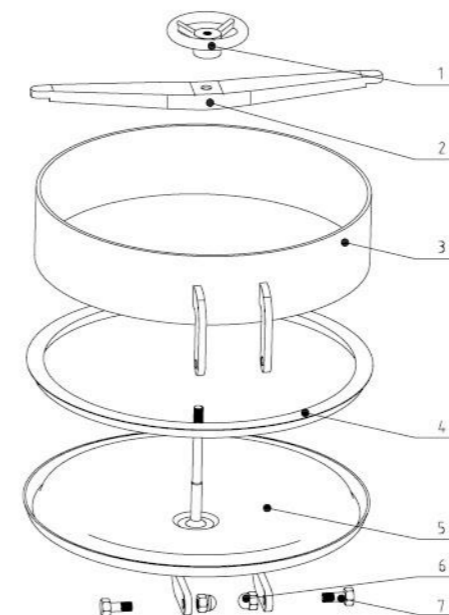
Round Outward Manway

How To Order

Type	Size	Material	Inner Surf	Outer Surf
WZB-6	DN400	304	0.8µm-0.4µm	0.8µm-0.4µm
Qty	Handwheel-Num	Height	Gasket	Pressure
20	1 Plastic	100mm	Silicone	0-1 bar



Exploded parts diagram

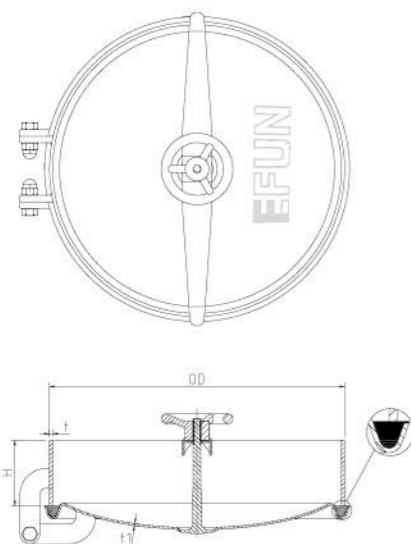


Technical requirements

- Gasket: Silicone/EPDM/NBR/FPM in accordance with FDA 177.2600.
- Material: 304(1.4301), 316L(1.4404)
- Internal surface: 0.8µm-0.4µm
- Outside surface: Mirror polished, Matte, sand-blasting finished.

Ltem	Description	Material	Qty
1	Hand Wheel	Plastic/T304	1
2	Bracket	T304	1
3	Frame	1.4301/1.4404	1
4	Gasket	EPDM	1
5	Cover	1.4301/1.4404	1
6	Screw	T304	2
7	Nut	T304	2

Dimensions



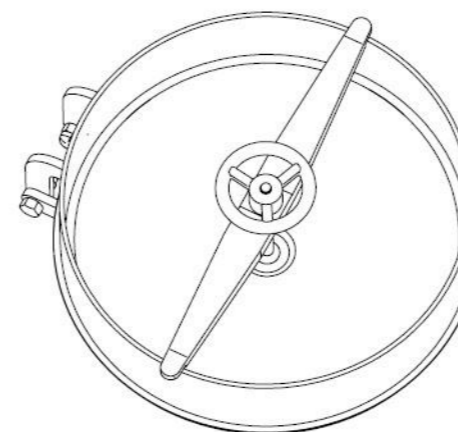
Standard size

At temperature 50°C/122°F

Size	OD mm	t mm	H mm	t1 mm	Pres (Bar)
DN400	Ø410	5	80-200	2.5	0-1
DN450	Ø460	5	80-200	2.5	0-1
DN500	Ø510	5	80-200	2.5	0-1

IF YOU WANT TO CHECK FOR MORE DETAILS
PLEASE CHECK THE FOLLOWING DRAWING
x1BAR ≈14.5PSI≈0.1MPA

Schematic diagram



GASKET	
Material	Color
Silicon	White
EPDM	Black
FPM	Black

Options

- Stainless steel finishes
- Polished with RA(µ)
- Bead blasted
- Pickled: on request
- Electro polished

WZB-B

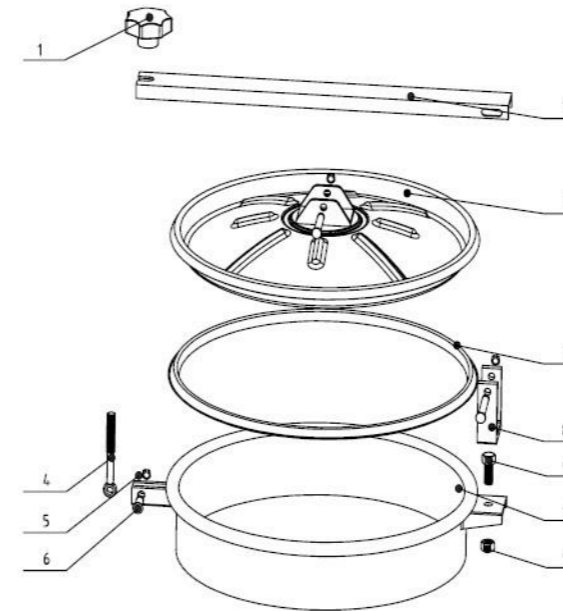
Round Outward Manway

How To Order

Type	Size	Material	Inner Surf	Outer Surf
WZB-B	DN400	304	0.8µm-0.4µm	0.8µm-0.4µm
Qty	Handwheel-Num	Height	Gasket	Pressure
20	1 Plastic	100mm	Silicone	0-1 bar



Exploded parts diagram

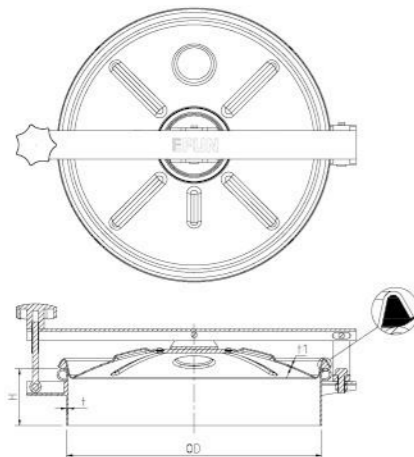


Technical requirements

- Gasket: Silicone/EPDM/NBR/FPM in accordance with FDA 177.2600.
- Material: 304(1.4301), 316L(1.4404)
- Internal surface: 0.8µm-0.4µm
- Outside surface: Mirror polished, Matte, sand-blasting finished.

Ltem	Description	Material	Qty
1	Handle	plastic/T304	1
2	Bracket	T304	1
3	Cover	1.4301/1.4404	1
4	Swing Bolt	304	1
5	Lock ring	T304	3
6	Pin	T304	3
7	Gasket	Silicone	1
8	Back hinge support	T304	1
9	Screw	T304	1
10	Frame	1.4301/1.4404	1
11	Nut	T304	1

Dimensions



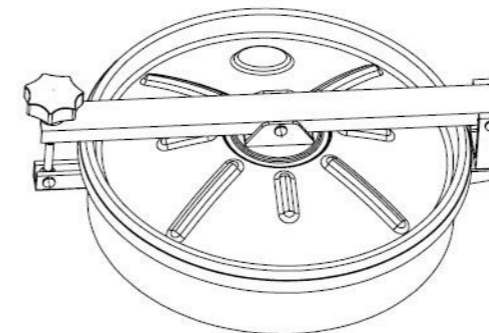
Standard size

At temperature 50°C/122°F

Size	OD mm	t mm	H mm	t1 mm	Pres (Bar)
DN300	Ø304	2	100	1.5	0-1
DN350	Ø354	2	100	1.5	0-1
DN400	Ø404	2	100	1.5	0-1
DN450	Ø454	2	100	1.5	0-1
DN500	Ø504	2	100	1.5	0-1

IF YOU WANT TO CHECK FOR MORE DETAILS
PLEASE CHECK THE FOLLOWING DRAWING
x1BAR ≈14.5PSI≈0.1MPA

Schematic diagram



GASKET

Material	Color
Silicon	White
EPDM	Black
FPM	Black

Options

Stainless steel finishes

Polished with RA(µ)

Bead blasted

Pickled: on request

Electro polished

WZB-B-2

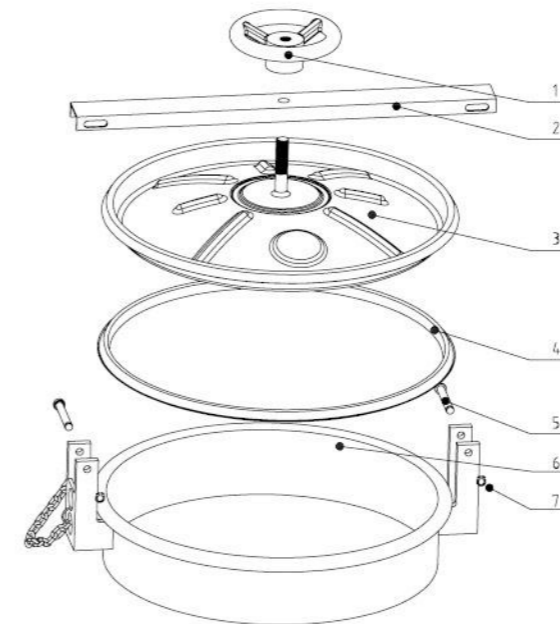
Round Outward Manway

How To Order

Type	Size	Material	Inner Surf	Outer Surf
WZB-B-2	DN400	304	0.8µm-0.4µm	0.8µm-0.4µm
Qty	Handwheel-Num	Height	Gasket	Pressure
20	1 Plastic	100mm	Silicone	0-1 bar



Exploded parts diagram

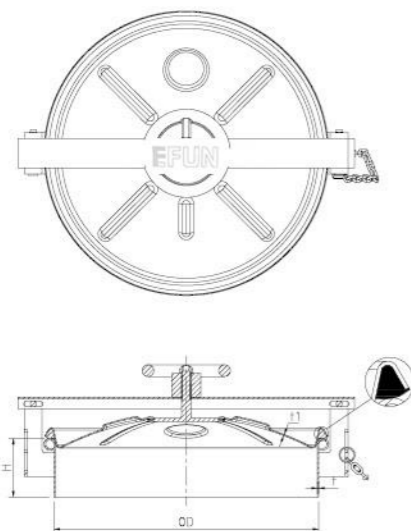


Technical requirements

- Gasket: Silicone/EPDM/NBR/FPM in accordance with FDA 177.2600.
- Material: 304(1.4301), 316L(1.4404)
- Internal surface: 0.8µm-0.4µm
- Outside surface: Mirror polished, Matte, sand-blasting finished.

Ltem	Description	Material	Qty
1	Handle Wheel	Plastic/T304	1
2	Bracket	T304	1
3	Cover	1.4301/1.4404	1
4	Gasket	Silicone	1
5	Pin	T304	2
6	Frame	1.4301/1.4404	1
7	Lock ring	T304	2

Dimensions



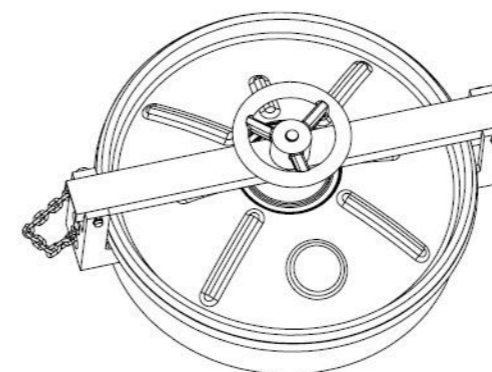
Standard size

At temperature 50°C/122°F

Size	OD mm	t mm	H mm	t1 mm	Pres (Bar)
DN300	Ø304	2	100	1.5	0-1
DN350	Ø354	2	100	1.5	0-1
DN400	Ø404	2	100	1.5	0-1
DN450	Ø454	2	100	1.5	0-1
DN500	Ø504	2	100	1.5	0-1

IF YOU WANT TO CHECK FOR MORE DETAILS
PLEASE CHECK THE FOLLOWING DRAWING
x1BAR ≈14.5PSI≈0.1MPA

Schematic diagram



GASKET

Material	Color
Silicon	White
EPDM	Black
FPM	Black

Options

- Stainless steel finishes
- Polished with RA(µ)
- Bead blasted
- Pickled: on request
- Electro polished

WZB-B-3

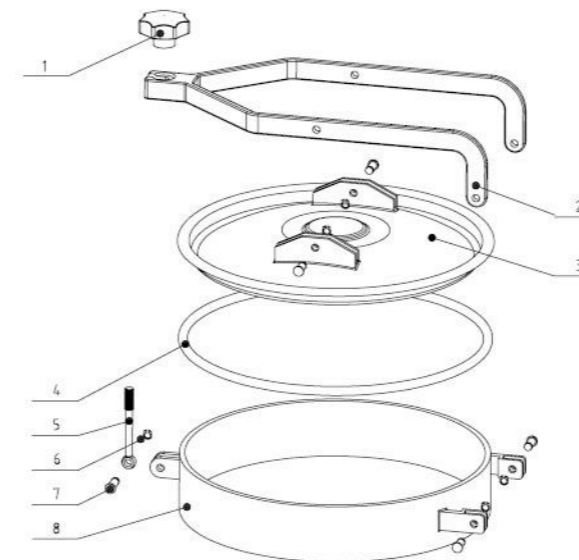
Round Outward Manway

How To Order

Type	Size	Material	Inner Surf	Outer Surf
WZB-B-3	DN400	304	0.8µm-0.4µm	0.8µm-0.4µm
Qty	Handwheel-Num	Height	Gasket	Pressure
20	1 Plastic	100mm	Silicone	0-1 bar



Exploded parts diagram

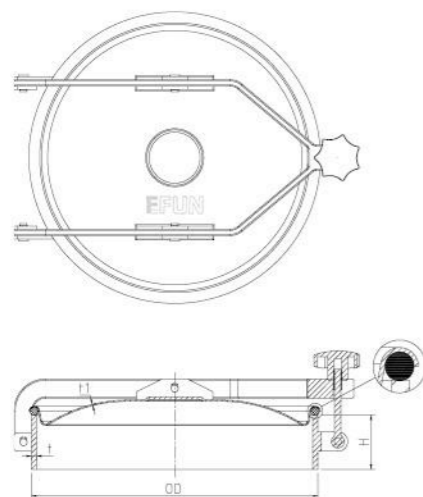


Technical requirements

- Gasket: Silicone/EPDM/NBR/FPM in accordance with FDA 177.2600.
- Material: 304(1.4301), 316L(1.4404)
- Internal surface: 0.8µm-0.4µm
- Outside surface: Mirror polished, Matte, sand-blasting finished.

Ltem	Description	Material	Qty
1	Handle	Plastic/T304	1
2	Bracket	304	1
3	Cover	1.4301/1.4404	1
4	Gasket	Silicone	1
5	Swing Bolt	304	1
6	Locking ring	T304	2
7	Pin	T304	2
8	Frame	1.4301/1.4404	1

Dimensions



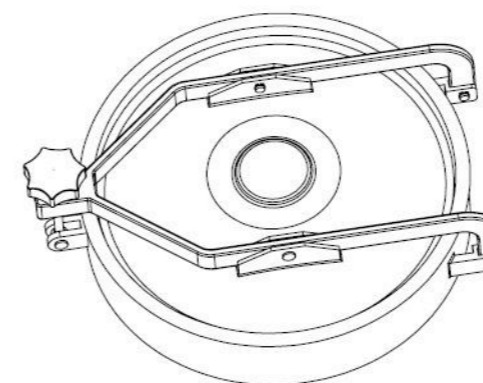
Standard size

At temperature 50°C/122°F

Size	OD mm	t mm	H mm	t1 mm	Pres (Bar)
DN300	Ø310	5	100	2	0-1
DN350	Ø360	5	100	2	0-1
DN400	Ø410	5	100	2	0-1
DN450	Ø460	5	100	2	0-1
DN500	Ø510	5	100	2	0-1

IF YOU WANT TO CHECK FOR MORE DETAILS
PLEASE CHECK THE FOLLOWING DRAWING
x1BAR ≈14.5PSI≈0.1MPA

Schematic diagram



GASKET

Material	Color
Silicon	White
EPDM	Black
FPM	Black

Options

- Stainless steel finishes
- Polished with RA(µ)
- Bead blasted
- Pickled: on request
- Electro polished

WZB-B-4

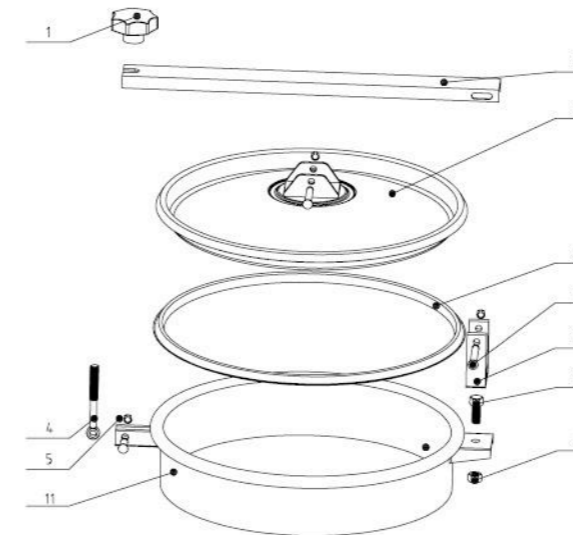
Round Outward Manway

How To Order

Type	Size	Material	Inner Surf	Outer Surf
WZB-B-4	DN400	304	0.8µm-0.4µm	0.8µm-0.4µm
Qty	Handwheel-Num	Height	Gasket	Pressure
20	1 Plastic	100mm	Silicone	0-1 bar



Exploded parts diagram

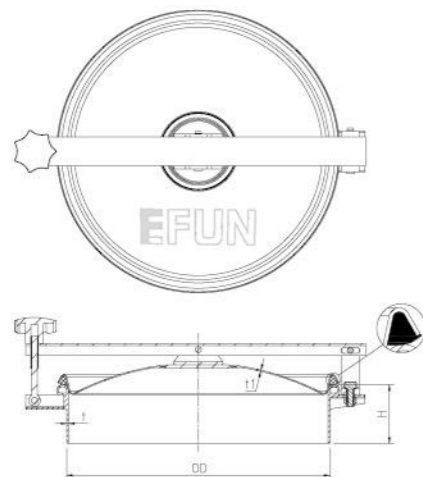


Technical requirements

- Gasket: Silicone/EPDM/NBR/FPM in accordance with FDA 177.2600.
- Material: 304(1.4301), 316L(1.4404)
- Internal surface: 0.8µm-0.4µm
- Outside surface: Mirror polished, Matte, sand-blasting finished.

Ltem	Description	Material	Qty
1	Handle	Plastic/T304	1
2	Brocket	T304	1
3	Cover	1.4301/1.4404	1
4	Swing Bolt	304	1
5	Lock ring	T304	3
6	Gasket	Silicone	1
7	pin	T304	3
8	Back hinge support	T304	1
9	Screw	T304	1
10	Nut	T304	1
11	Frame	1.4301/1.4404	1

Dimensions



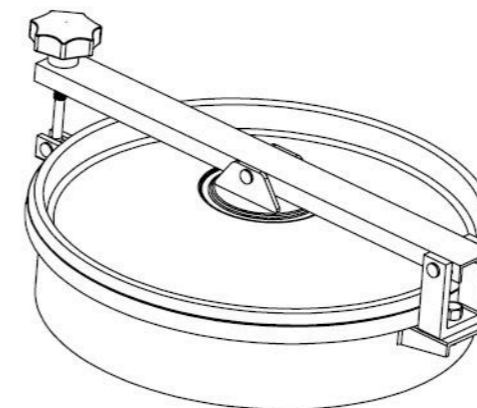
Standard size

At temperature 50°C/122°F

Size	OD mm	t mm	H mm	t1 mm	Pres (Bar)
DN300	Ø304	2	100	1.5	0-1
DN350	Ø354	2	100	1.5	0-1
DN400	Ø404	2	100	1.5	0-1
DN450	Ø454	2	100	1.5	0-1
DN500	Ø504	2	100	1.5	0-1

IF YOU WANT TO CHECK FOR MORE DETAILS
PLEASE CHECK THE FOLLOWING DRAWING
x1BAR ≈14.5PSI≈0.1MPA

Schematic diagram



GASKET	
Material	Color
Silicon	White
EPDM	Black
FPM	Black

Options

- Stainless steel finishes
- Polished with RA(µ)
- Bead blasted
- Pickled: on request
- Electro polished

WZB-B-5

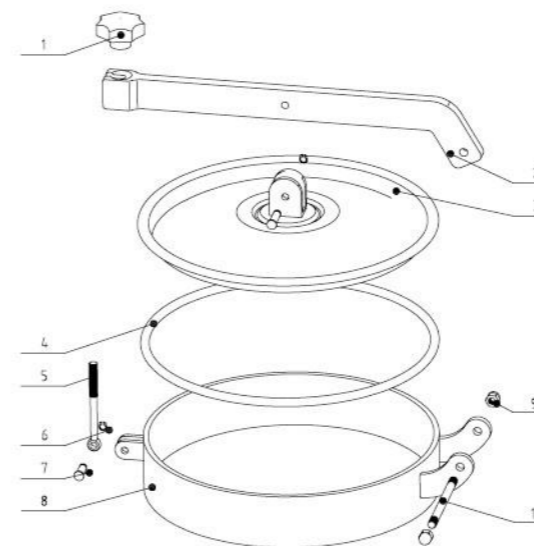
Round Outward Manway

How To Order

Type	Size	Material	Inner Surf	Outer Surf
WZB-B-5	DN400	304	0.8µm-0.4µm	0.8µm-0.4µm
Qty	Handwheel-Num	Height	Gasket	Pressure
20	1 Plastic	100mm	Silicone	0-1 bar



Exploded parts diagram

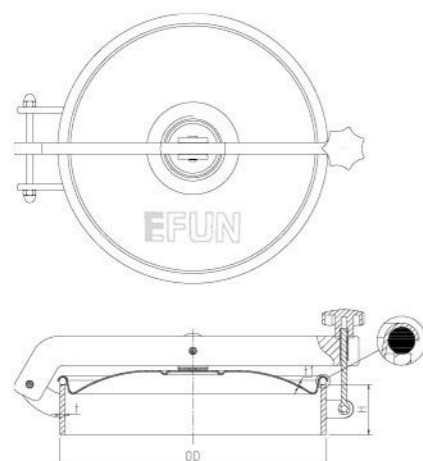


Technical requirements

- Gasket: Silicone/EPDM/NBR/FPM in accordance with FDA 177.2600.
- Material: 304(1.4301), 316L(1.4404)
- Internal surface: 0.8µm-0.4µm
- Outside surface: Mirror polished, Matte, sand-blasting finished.

Ltem	Description	Material	Qty
1	Handle	plastic/T304	1
2	Bracket	T304	1
3	Cover	1.4301/1.4404	1
4	Gasket	silicon	1
5	Swing Bolt	304	1
6	Lock ring	T304	2
7	Pin	T304	2
8	Frame	1.4301/1.4404	1
9	Nut	T304	2
10	Screw	T304	1

Dimensions



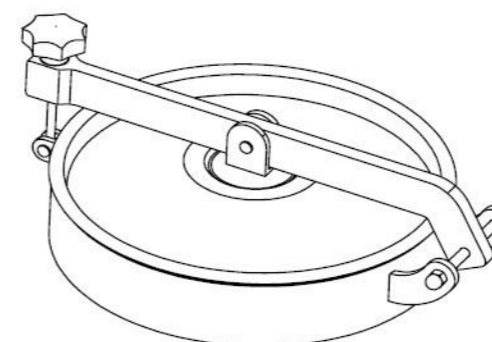
Standard size

At temperature 50°C/122°F

Size	OD mm	t mm	H mm	t1 mm	Pres (Bar)
DN300	Ø310	5	100	2	0-1
DN350	Ø360	5	100	2	0-1
DN430	Ø440	5	100	2	0-1
DN450	Ø460	5	100	2	0-1
DN500	Ø510	5	100	2	0-1

IF YOU WANT TO CHECK FOR MORE DETAILS
PLEASE CHECK THE FOLLOWING DRAWING
x1BAR ≈14.5PSI≈0.1MPA

Schematic diagram



GASKET	
Material	Color
Silicon	White
EPDM	Black
FPM	Black

Options

- Stainless steel finishes
- Polished with RA(µ)
- Bead blasted
- Pickled: on request
- Electro polished

WZB-C

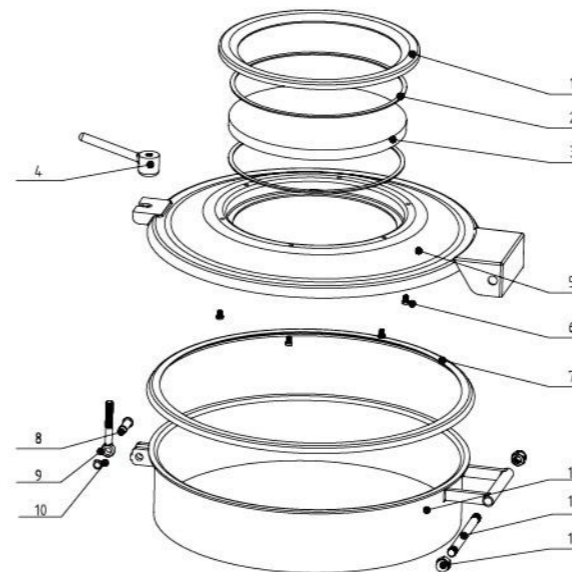
Round Outward Manway

How To Order

Type	Size	Material	Inner Surf	Outer Surf
WZB-C	Ø450	304	0.8µm-0.4µm	0.8µm-0.4µm
Qty	Handwheel-Num	Height	Gasket	Pressure
20	1 Plastic	100mm	Silicone	0-1 bar



Exploded parts diagram

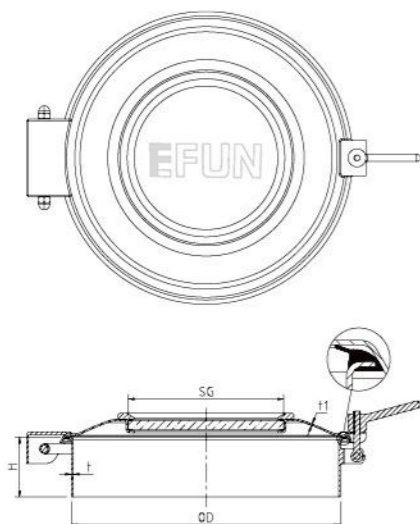


Technical requirements

- Gasket: Silicone/EPDM/NBR/FPM in accordance with FDA 177.2600.
- Material: 304(1.4301), 316L(1.4404)
- Internal surface: 0.8µm-0.4µm
- Outside surface: Mirror polished, Matte, sand-blasting finished.

Ltem	Description	Material	Qty
1	Top Flange	T304	1
2	Seal	PTFE	2
3	Class	Tempered glass	1
4	Handle	Plastic/T304	1
5	Cover	1.4301/1.4404	1
6	Screw	T304	6
7	Gasket	Silicon	1
8	Pin	T304	1
9	Swing Bolt	304	1
10	Lock Ring	T304	1
11	Frame	1.4301/1.4404	1
12	Screw	T304	1
13	Nut	T304	1

Dimensions



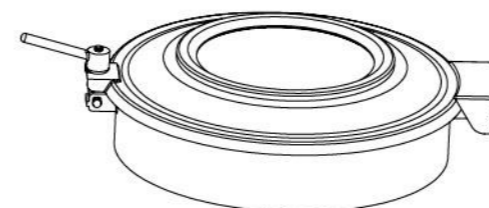
Standard size

At temperature 50°C/122°F

Size	OD mm	t mm	H mm	t1 mm	SG mm	Pres (Bar)
Ø300	Ø300	3	80-200	2.5	DN80	0-1
Ø350	Ø350	3	80-200	2.5	DN80	0-1
Ø400	Ø400	3	80-200	2.5	DN100	0-1
Ø430	Ø430	3	80-200	2.5	DN100	0-1
Ø450	Ø450	3	80-200	2.5	DN150	0-1
Ø500	Ø500	3	80-200	2.5	DN200	0-1
Ø600	Ø600	4	80-200	3	DN400	0-1

IF YOU WANT TO CHECK FOR MORE DETAILS
PLEASE CHECK THE FOLLOWING DRAWING
x1BAR ≈14.5PSI≈0.1MPA

Schematic diagram



GASKET

Material	Color
Silicon	White
EPDM	Black
FPM	Black

Options

- Stainless steel finishes
- Polished with RA(µ)
- Bead blasted
- Pickled: on request
- Electro polished

WZB-C-2 (JPN)

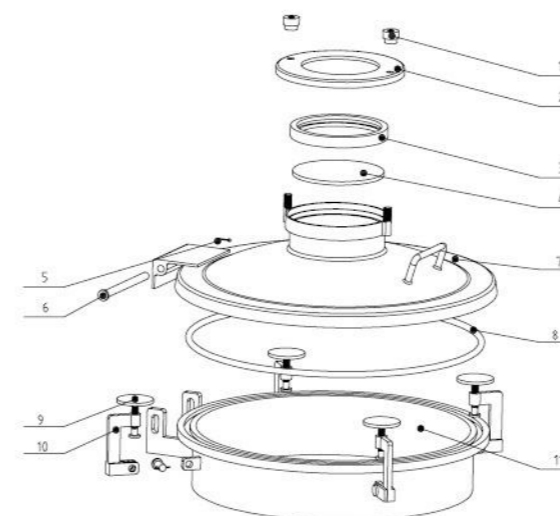
Round Outward Manway

How To Order

Type	Size	Material	Inner Surf	Outer Surf
WZB-C-2	DN400	304	0.8µm-0.4µm	0.8µm-0.4µm
Qty	Handwheel-Num	Height	Gasket	Pressure
20	1 Plastic	100mm	Silicone	0-1 bar



Exploded parts diagram

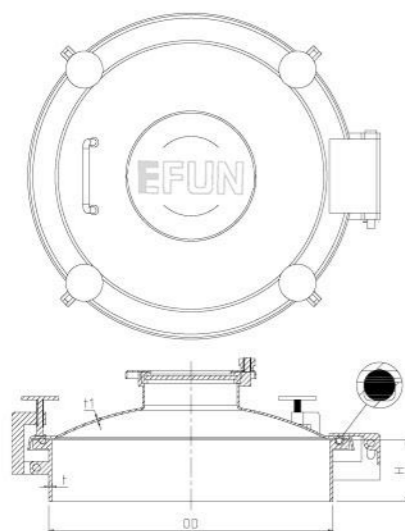


Technical requirements

- Gasket: Silicone/EPDM/NBR/FPM in accordance with FDA 177.2600.
- Material: 304(1.4301), 316L(1.4404)
- Internal surface: 0.8µm-0.4µm
- Outside surface: Mirror polished, Matte, sand-blasting finished.

Ltem	Description	Material	Qty
1	Nut	T304	2
2	SG cover	T304	1
3	SG seal	Silicone	1
4	Sight glass	Tempered glass	1
5	cotter pin	T304	5
6	Pin	T304	5
7	Cover	1.4301/1.4404	1
8	Gasket	Silicone	1
9	Handle	T304	4
10	Support	T304	4
11	Frame	1.4301/1.4404	1

Dimensions



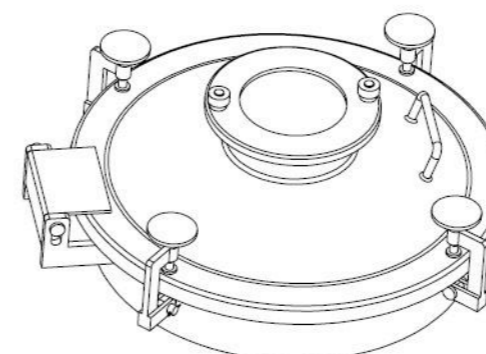
Standard size

At temperature 50°C/122°F

Size	OD mm	t mm	H mm	t1 mm	Pres (Bar)
DN400	Ø456	3	100	3	0-1
DN450	Ø456	3	100	3	0-1
DN500	Ø506	3	100	3	0-1

IF YOU WANT TO CHECK FOR MORE DETAILS
PLEASE CHECK THE FOLLOWING DRAWING
x1BAR ≈14.5PSI≈0.1MPA

Schematic diagram



GASKET	
Material	Color
Silicon	White
EPDM	Black
FPM	Black

Options

Stainless steel finishes
Polished with RA(µ)
Bead blasted
Pickled: on request
Electro polished

WZB-C-3 (GER)

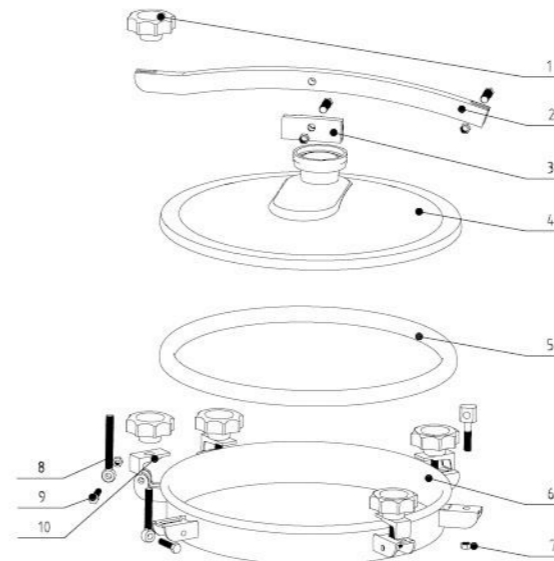
Round Outward Manway

How To Order

Type	Size	Material	Inner Surf	Outer Surf
WZB-C-3	Ø400	304	0.8µm-0.4µm	0.8µm-0.4µm
Qty	Handwheel-Num	Height	Gasket	Pressure
20	5 Plastic	60mm	Silicone	0-1 bar



Exploded parts diagram

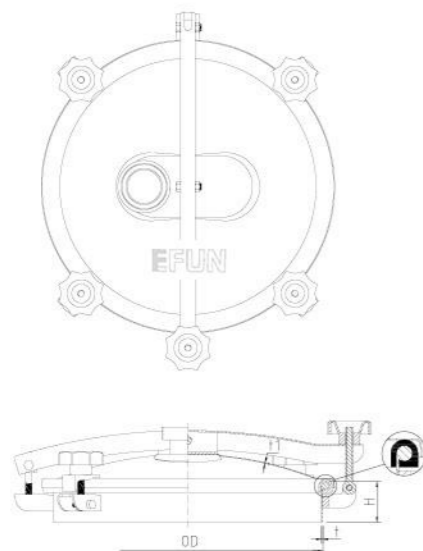


Technical requirements

- Gasket: Silicone/EPDM/NBR/FPM in accordance with FDA 177.2600.
- Material: 304(1.4301), 316L(1.4404)
- Internal surface: 0.8µm-0.4µm
- Outside surface: Mirror polished, Matte, sand-blasting finished.

Ltem	Description	Material	Qty
1	Handle	plastic/T304	5
2	Braket	304	1
3	Up hinge support	T304	1
4	Cover	1.4301/1.4404	1
5	Gasket	T304	1
6	Frame	1.4301/1.4404	1
7	Nut	T304	8
8	Swing bolt	T304	8
9	Screw	T304	4
10	Back hinge Support	T304	4

Dimensions



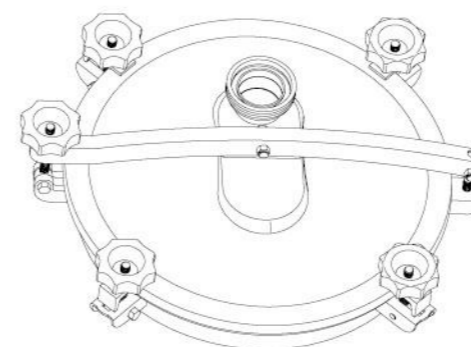
Standard size

At temperature 50°C/122°F

Size	OD mm	t mm	H mm	t1 mm	Pres (Bar)
Ø400	Ø400	3	60	2.5	0-1

IF YOU WANT TO CHECK FOR MORE DETAILS
PLEASE CHECK THE FOLLOWING DRAWING
x1BAR ≈14.5PSI≈0.1MPA

Schematic diagram



GASKET

Material	Color
Silicon	White
EPDM	Black
FPM	Black

Options

- Stainless steel finishes
- Polished with RA(µ)
- Bead blasted
- Pickled: on request
- Electro polished

WZB-C-4 (GER)

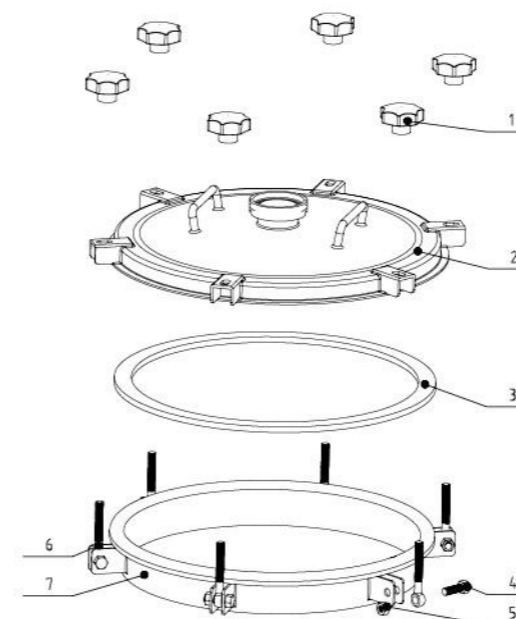
Round Outward Manway

How To Order

Type	Size	Material	Inner Surf	Outer Surf
WZB-C-4	Ø400	304	0.8µm-0.4µm	0.8µm-0.4µm
Qty	Handwheel-Num	Height	Gasket	Pressure
20	6 Plastic	60mm	Silicone	0-1 bar



Exploded parts diagram

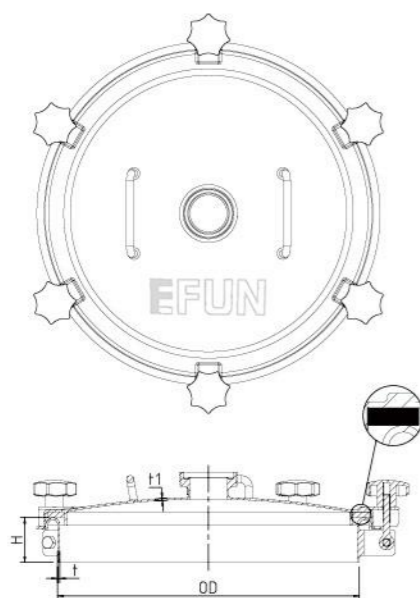


Technical requirements

- Gasket: Silicone/EPDM/NBR/FPM in accordance with FDA 177.2600.
- Material: 304(1.4301), 316L(1.4404)
- Internal surface: 0.8µm-0.4µm
- Outside surface: Mirror polished, Matte, sand-blasting finished.

Ltem	Description	Material	Qty
1	Handle	plastic/T304	6
2	Cover	1.4301/1.4404	1
3	Gasket	Silicon	1
4	Screw	T304	6
5	Nut	T304	8
6	Swing bolt	T304	6
7	Frame	1.4301/1.4404	1

Dimensions



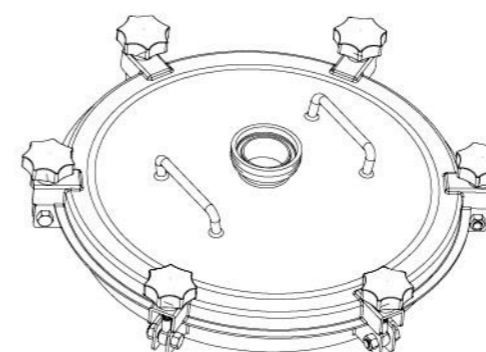
Standard size

At temperature 50°C/122°F

Size	OD mm	t mm	H mm	t1 mm	Pres (Bar)
Ø400	Ø400	3	60	2.5	0-1

IF YOU WANT TO CHECK FOR MORE DETAILS
PLEASE CHECK THE FOLLOWING DRAWING
x1BAR ≈14.5PSI≈0.1MPA

Schematic diagram



GASKET	
Material	Color
Silicon	White
EPDM	Black
FPM	Black

Options

- Stainless steel finishes
- Polished with RA(µ)
- Bead blasted
- Pickled: on request
- Electro polished

WZC

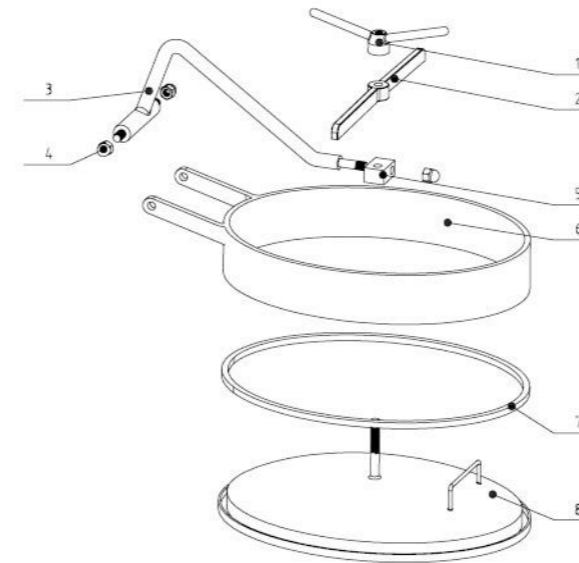
Oval Inward Manway

How To Order

Type	Size	Material	Inner Surf	Outer Surf
WZC	430x330	304	0.8µm-0.4µm	0.8µm-0.4µm
Qty	Handwheel-Num	Height	Gasket	Pressure
20	1 Y stainless steel	75mm	Silicone	1-3 bar



Exploded parts diagram

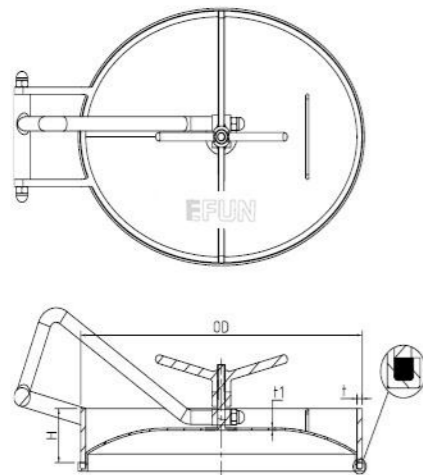


Technical requirements

- Gasket: Silicone/EPDM/NBR/FPM in accordance with FDA 177.2600.
- Material: 304(1.4301), 316L(1.4404)
- Internal surface: 0.8µm-0.4µm
- Outside surface: Mirror polished, Matte, sand-blasting finished.

Ltem	Description	Material	Qty
1	Top nut	T304	1
2	Bracket	T304	1
3	Suspension arm	T304	1
4	Nut	T304	3
5	Hum	T304	1
6	Frame	1.4301/1.4404	1
7	Gasket	EMDP	1
6	Cover	1.4301/1.4404	1

Dimensions



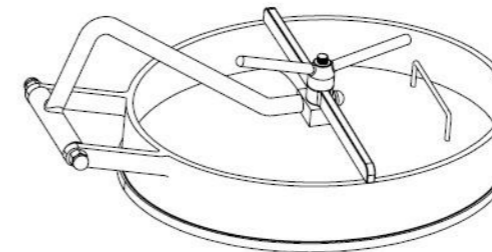
Standard size

At temperature 50°C/122°F

Size	OD mm	t mm	H mm	t1 mm	Pres (Bar)
430x330	430x330	8	75-200	2.5	1-3
435x335	435x335	10	75-200	2.5	1-3
450x350	450x350	8	75-200	3	1-3
530x430	530x430	10	75-200	3	1-3
535x435	535x435	12	75-200	3	1-3
635x525	635x525	12	80-200	3	1-3

IF YOU WANT TO CHECK FOR MORE DETAILS
PLEASE CHECK THE FOLLOWING DRAWING
x1BAR ≈14.5PSI≈0.1MPA

Schematic diagram



GASKET

Material	Color
Silicon	White
EPDM	Black
FPM	Black

Options

Stainless steel finishes

Polished with RA(µ)

Bead blasted

Pickled: on request

Electro polished

WZC-2

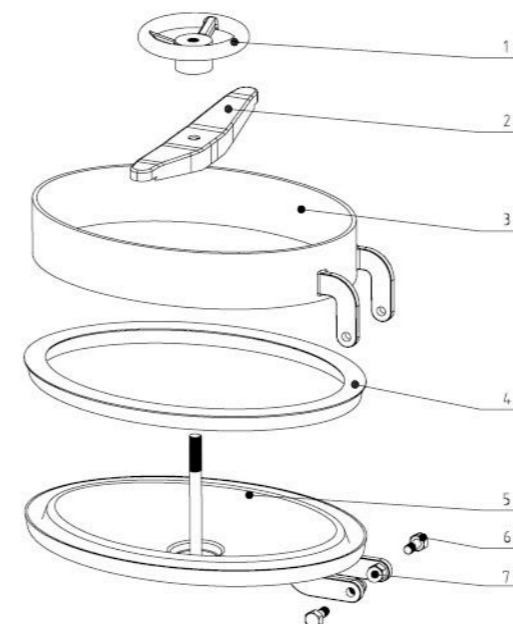
Oval Inward Manway

How To Order

Type	Size	Material	Inner Surf	Outer Surf
WZC-2	458x323	304	0.8µm-0.4µm	0.8µm-0.4µm
Qty	Handwheel-Num	Height	Gasket	Pressure
20	1 Plastic	80mm	Silicone	1-3 bar



Exploded parts diagram

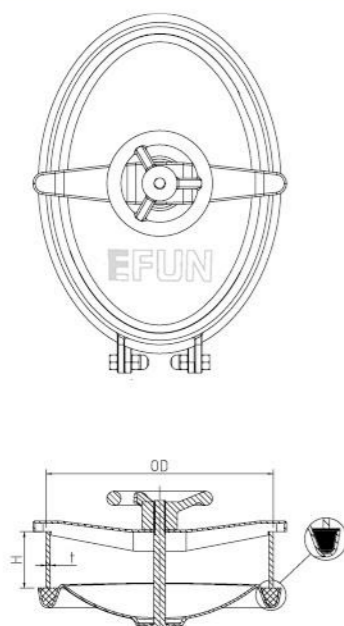


Technical requirements

- Gasket: Silicone/EPDM/NBR/FPM in accordance with FDA 177.2600.
- Material: 304(1.4301), 316L(1.4404)
- Internal surface: 0.8µm-0.4µm
- Outside surface: Mirror polished, Matte, sand-blasting finished.

Ltem	Description	Material	Qty
1	Hand Wheel	Plastic/T304	1
2	Bracket	T304	1
3	Frame	1.4301/1.4404	1
4	Gasket	EPDM	1
5	Cover	1.4301/1.4404	1
6	Screw	T304	2
7	Nut	T304	2

Dimensions



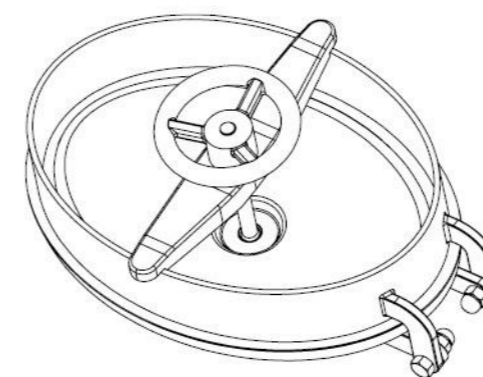
Standard size

At temperature 50°C/122°F

Size	OD mm	t mm	H mm	t1 mm	Pres (Bar)
458x323	458x323	6	80	3	1-3

IF YOU WANT TO CHECK FOR MORE DETAILS
PLEASE CHECK THE FOLLOWING DRAWING
x1BAR ≈14.5PSI≈0.1MPA

Schematic diagram



GASKET	
Material	Color
Silicon	White
EPDM	Black
FPM	Black

Options

Stainless steel finishes
Polished with RA(µ)
Bead blasted
Pickled: on request
Electro polished

WZC-3

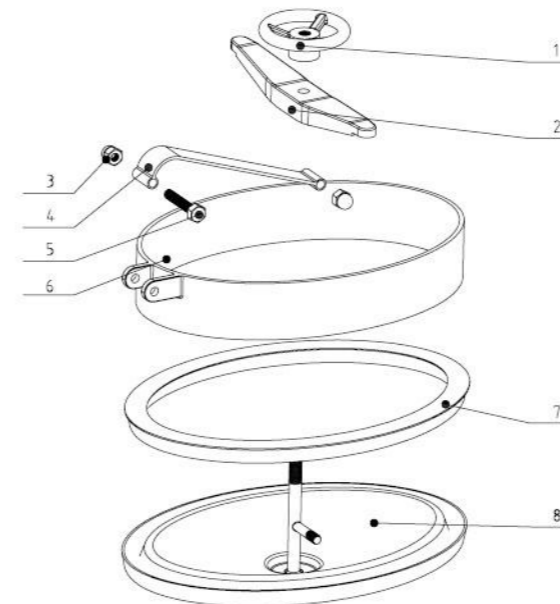
Oval Inward Manway

How To Order

Type	Size	Material	Inner Surf	Outer Surf
WZC-3	458x323	304	0.8µm-0.4µm	0.8µm-0.4µm
Qty	Handwheel-Num	Height	Gasket	Pressure
20	1 Plastic	80mm	Silicone	1-3 bar



Exploded parts diagram

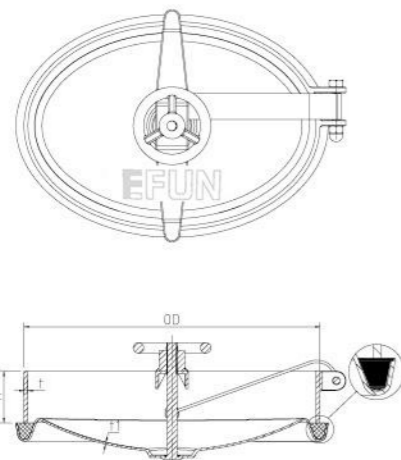


Technical requirements

- Gasket: Silicone/EPDM/NBR/FPM in accordance with FDA 177.2600.
- Material: 304(1.4301), 316L(1.4404)
- Internal surface: 0.8µm-0.4µm
- Outside surface: Mirror polished, Matte, sand-blasting finished.

Ltem	Description	Material	Qty
1	Hand Wheel	Plastic/T304	1
2	Bracket	T304	1
3	Nut	T304	2
4	Suspension arm	T304	1
5	Screw	T304	1
6	Frame	1.4301/1.4404	1
7	Gasket	EPDM	1
8	Cover	1.4301/1.4404	1

Dimensions



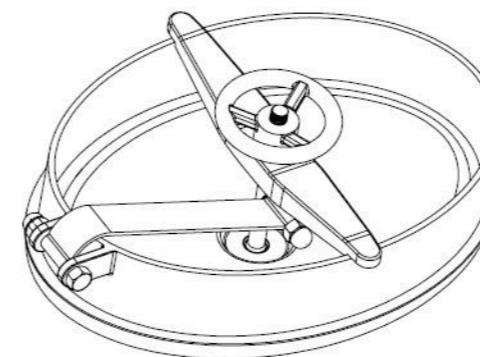
Standard size

At temperature 50°C/122°F

Size	OD mm	t mm	H mm	t1 mm	Pres (Bar)
458x323	458x323	6	80	3	1-3

IF YOU WANT TO CHECK FOR MORE DETAILS
PLEASE CHECK THE FOLLOWING DRAWING
x1BAR ≈14.5PSI≈0.1MPA

Schematic diagram



GASKET	
Material	Color
Silicon	White
EPDM	Black
FPM	Black

Options

- Stainless steel finishes
- Polished with RA(µ)
- Bead blasted
- Pickled: on request
- Electro polished

WZC-4

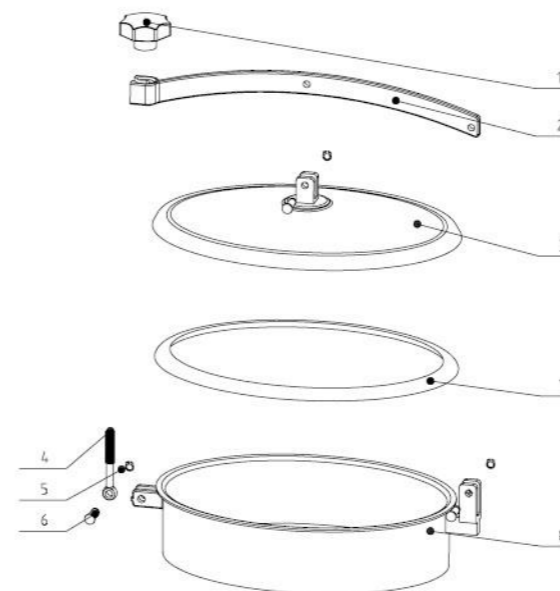
Oval Inward Manway

How To Order

Type	Size	Material	Inner Surf	Outer Surf
WZC-4	430x330	304	0.8µm-0.4µm	0.8µm-0.4µm
Qty	Handwheel-Num	Height	Gasket	Pressure
20	1 Plasticl	100mm	Silicone	0-1 bar



Exploded parts diagram

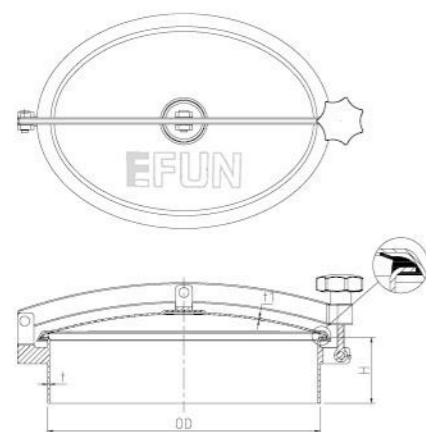


Technical requirements

- Gasket: Silicone/EPDM/NBR/FPM in accordance with FDA 177.2600.
- Material: 304(1.4301), 316L(1.4404)
- Internal surface: 0.8µm-0.4µm
- Outside surface: Mirror polished, Matte, sand-blasting finished.

Ltem	Description	Material	Qty
1	Handle	T304	1
2	Bracket	T304	1
3	Cover	1.4301/1.4404	1
4	Swing bolt	T304	1
5	Lock ring	T304	3
6	pin	T304	3
7	Gasket	Silicon	1
8	Frame	1.4301/1.4404	1

Dimensions



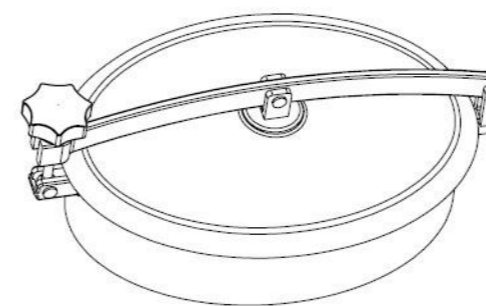
Standard size

At temperature 50°C/122°F

Size	OD mm	t mm	H mm	t1 mm	Pres (Bar)
350x250	350x250	3	100	2.5	0-1
420x300	420x300	3	100	2.5	0-1
430x330	430x330	3	100	2.5	0-1
450x350	450x350	3	100	2.5	0-1
530x430	530x430	3	100	3	0-1
550x450	550x450	3	100	3	0-1

IF YOU WANT TO CHECK FOR MORE DETAILS
PLEASE CHECK THE FOLLOWING DRAWING
x1BAR ≈14.5PSI≈0.1MPA

Schematic diagram



GASKET

Material	Color
Silicon	White
EPDM	Black
FPM	Black

Options

- Stainless steel finishes
- Polished with RA(µ)
- Bead blasted
- Pickled: on request
- Electro polished

WZC-5

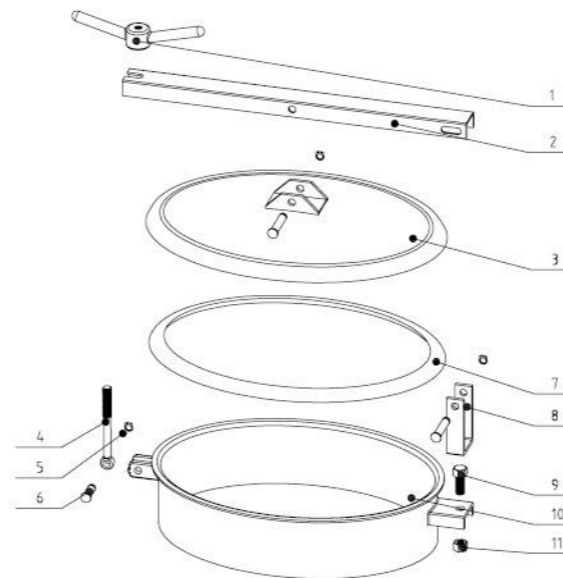
Oval Inward Manway

How To Order

Type	Size	Material	Inner Surf	Outer Surf
WZC-5	430X330	304	0.8µm-0.4µm	Matte
Qty	Handwheel-Num	Height	Gasket	Pressure
20	1Y stainless steel	100mm	Silicone	0-1 bar



Exploded parts diagram

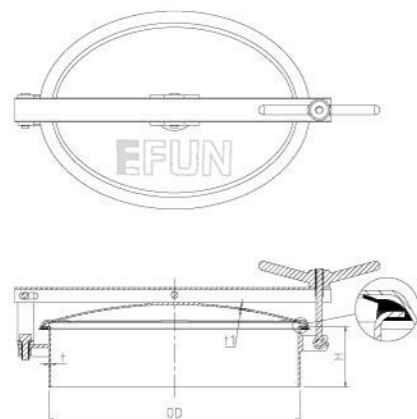


Technical requirements

- Gasket: Silicone/EPDM/NBR/FPM in accordance with FDA 177.2600.
- Material: 304(1.4301), 316L(1.4404)
- Internal surface: 0.8µm-0.4µm
- Outside surface: Mirror polished, Matte, sand-blasting finished.

Ltem	Description	Material	Qty
1	Handle	T304	1
2	Bracket	T304	1
3	Cover	1.4301/1.4404	1
4	Swing bolt	T304	1
5	Lock ring	T304	2
6	pin	T304	2
7	Gasket	Silicon	1
8	Back hinge supper	1.4301/1.4404	1
9	Screw	T304	1
10	Frame	1.4301/1.4404	1
11	Nut	T304	1

Dimensions



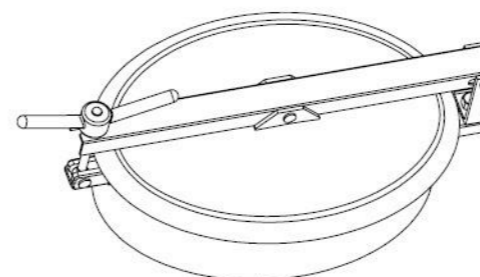
Standard size

At temperature 50°C/122°F

Size	OD mm	t mm	H mm	t1 mm	Pres (Bar)
350x250	350x250	3	100	2.5	0-1
420x300	420x300	3	100	2.5	0-1
430x330	430x330	3	100	2.5	0-1
450x350	450x350	3	100	2.5	0-1
530x430	530x430	3	100	3	0-1
550x450	550x450	3	100	3	0-1

IF YOU WANT TO CHECK FOR MORE DETAILS
PLEASE CHECK THE FOLLOWING DRAWING
x1BAR ≈14.5PSI≈0.1MPA

Schematic diagram



GASKET

Material	Color
Silicon	White
EPDM	Black
FPM	Black

Options

Stainless steel finishes

Polished with RA(µ)

Bead blasted

Pickled: on request

Electro polished

WZC-6

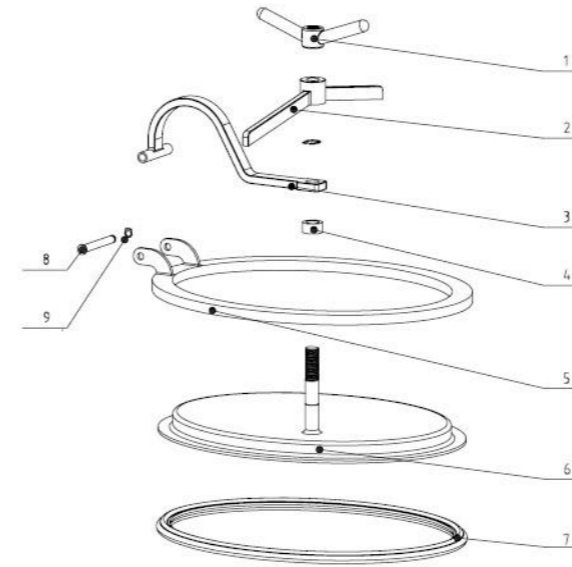
Oval Inward Manway

How To Order

Type	Size	Material	Inner Surf	Outer Surf
WZC-6	445x310	304	0.8µm-0.4µm	0.8µm-0.4µm
Qty	Handwheel-Num	Height	Gasket	Pressure
20	1 Y stainless steel	15mm	Silicone	1-3 bar



Exploded parts diagram

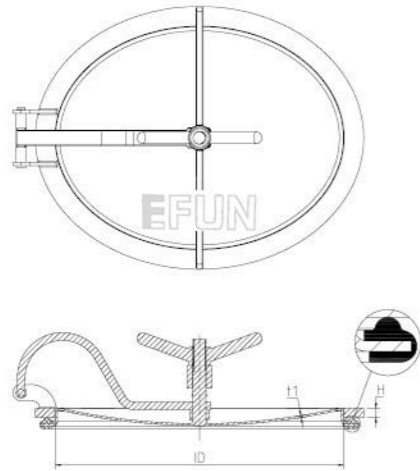


Technical requirements

- Gasket: Silicone/EPDM/NBR/FPM in accordance with FDA 177.2600.
- Material: 304(1.4301), 316L(1.4404)
- Internal surface: 0.8µm-0.4µm
- Outside surface: Mirror polished, Matte, sand-blasting finished.

Ltem	Description	Material	Qty
1	Top nut	Plastic/T304	1
2	Bracket	T304	1
3	Supension arm	T304	1
4	The gasket	PTFE	1
5	Frame	1.4301/1.4404	1
6	Cover	1.4301/1.4404	1
7	Gasket	EPDM	1
8	Pin	T304	1
9	Lock ring	T304	2

Dimensions



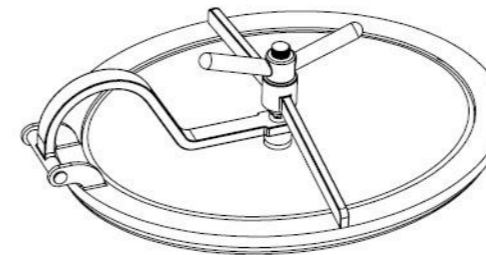
Standard size

At temperature 50°C/122°F

Size	OD mm	t mm	H mm	t1 mm	Pres (Bar)
445x310	445x310	5	15	4	1-3

IF YOU WANT TO CHECK FOR MORE DETAILS
PLEASE CHECK THE FOLLOWING DRAWING
x1BAR ≈14.5PSI≈0.1MPA

Schematic diagram



GASKET	
Material	Color
Silicon	White
EPDM	Black
FPM	Black

Options

- Stainless steel finishes
- Polished with RA(µ)
- Bead blasted
- Pickled: on request
- Electro polished

WZC-B

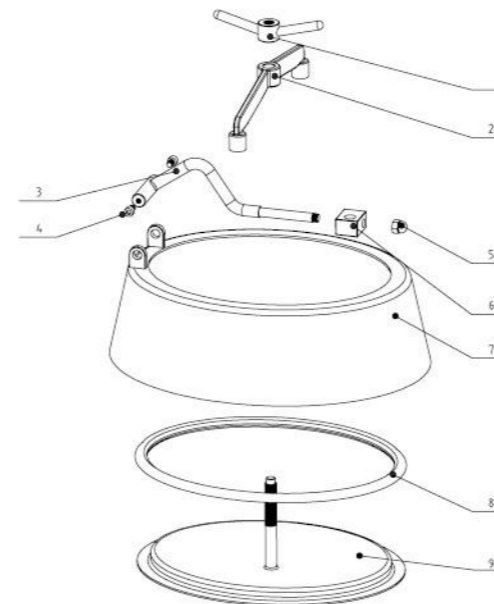
Oval Inward Manway with Bevel Edge

How To Order

Type	Size	Material	Inner Surf	Outer Surf
WZC-B	580X480	304	0.8µm-0.4µm	0.8µm-0.4µm
Qty	Handwheel-Num	Height	Gasket	Pressure
20	1 Y stainless steel	133mm	Silicone	1-3 bar



Exploded parts diagram

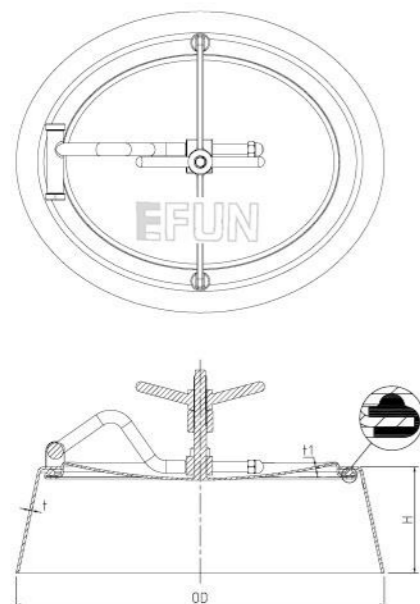


Technical requirements

- Gasket: Silicone/EPDM/NBR/FPM in accordance with FDA 177.2600.
- Material: 304(1.4301), 316L(1.4404)
- Internal surface: 0.8µm-0.4µm
- Outside surface: Mirror polished, Matte, sand-blasting finished.

Ltem	Description	Material	Qty
1	Top Nut	T304	1
2	Braket	T304	1
3	Suspension arm	T304	1
4	Hub	T304	1
5	Screw	T304	1
6	Nut	T304	3
7	Cover	1.4301/1.4404	1
8	Gasket	EPDM	1
9	Frame	1.4301/1.4404	1

Dimensions



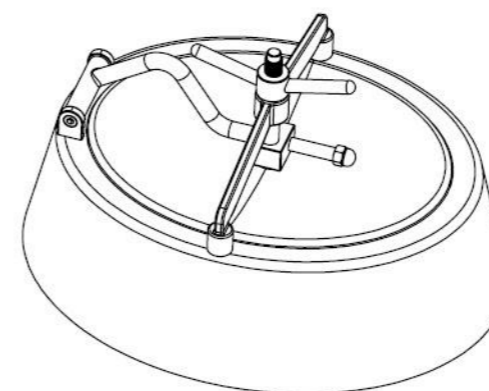
Standard size

At temperature 50°C/122°F

Size	OD mm	t mm	H mm	t1 mm	Pres (Bar)
370x270	370x270	4	75	3	1-3
490x390	490x390	5	170	3	1-3
542x446	542x446	4	195	3	1-3
550x450	550x450	5	80	3	1-3
565x465	565x465	5	100	4	1-3
580x480	580x480	5	133	4	1-3
608x508	608x508	5	200	4	1-3

IF YOU WANT TO CHECK FOR MORE DETAILS
PLEASE CHECK THE FOLLOWING DRAWING
x1BAR ≈14.5PSI≈0.1MPA

Schematic diagram



GASKET

Material	Color
Silicon	White
EPDM	Black
FPM	Black

Options

Stainless steel finishes
Polished with RA(µ)
Bead blasted
Pickled: on request
Electro polished

WZD

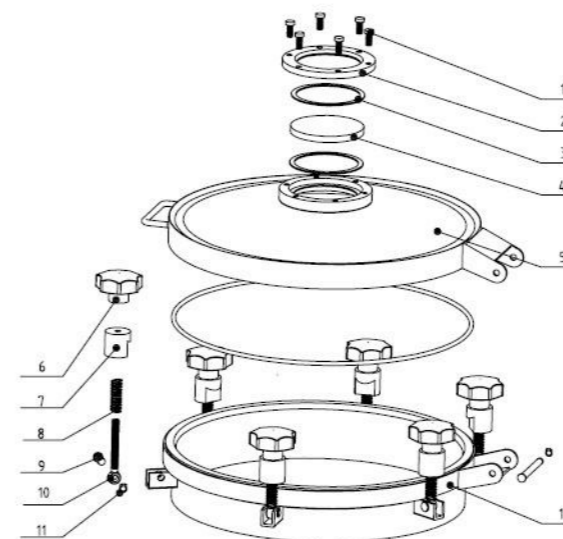
Round Outward Manway With Sight Glass

How To Order

Type	Size	Material	Inner Surf	Outer Surf
WZD	DN400	304	0.8µm-0.4µm	0.8µm-0.4µm
Qty	Handwheel-Num	Height	Gasket	Pressure
20	6 Plastic-DN80SG	100mm	Silicone	1-3 bar



Exploded parts diagram

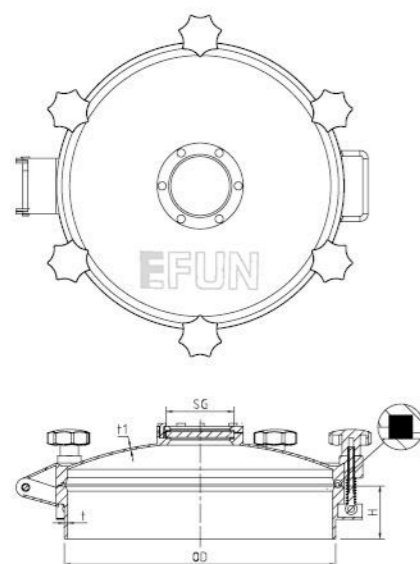


Technical requirements

- Gasket: Silicone/EPDM/NBR/FPM in accordance with FDA 177.2600.
- Material: 304(1.4301), 316L(1.4404)
- Internal surface: 0.8µm-0.4µm
- Outside surface: Mirror polished, Matte, sand-blasting finished.

Ltem	Description	Material	Qty
1	Screw	T304	6
2	Frame	1.4301/1.4404	1
3	Seal	PTFE	2
4	Sight glass	Tempered glass	1
5	Cover	1.4301/1.4404	1
6	Handle	plastic/T304	6
7	Hub	T304	6
8	Spring	T304	6
9	Pin	T304	6
10	Swing bolt	T304	6
11	Lock ring	T304	6
12	Frame	1.4301/1.4404	4

Dimensions



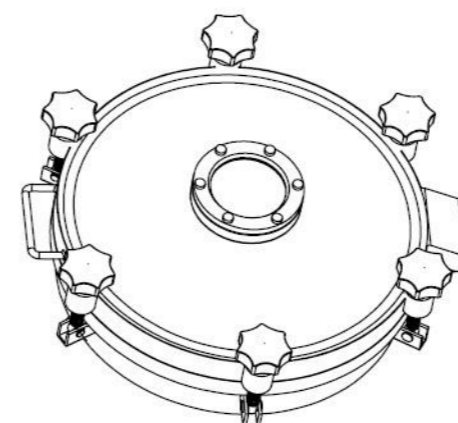
Standard size

At temperature 50°C/122°F

Size	OD mm	t mm	H mm	t1 mm	Hand Num	SG mm	Pres (Bar)
DN200	Ø206	3	80-200	3	4	DN80	1-3
DN300	Ø306	3	80-200	3	4	DN80	1-3
DN350	Ø350	3	80-200	3	5	DN80	1-3
DN400	Ø406	3	80-200	3	6	DN80	1-3
DN430	Ø436	3	80-200	3	6	DN80	1-3
DN450	Ø456	3	80-200	3	6	DN80	1-3
DN500	Ø508	4	80-200	3	6	DN80	1-3
DN550	Ø558	4	80-200	3	6	DN80	1-3
DN600	Ø608	4	80-200	3	8	DN80	1-3

IF YOU WANT TO CHECK FOR MORE DETAILS
PLEASE CHECK THE FOLLOWING DRAWING
x1BAR ≈14.5PSI≈0.1MPA

Schematic diagram



GASKET	
Material	Color
Silicon	White
EPDM	Black
FPM	Black

Options

Stainless steel finishes
Polished with RA(µ)
Bead blasted
Pickled: on request
Electro polished

WZE

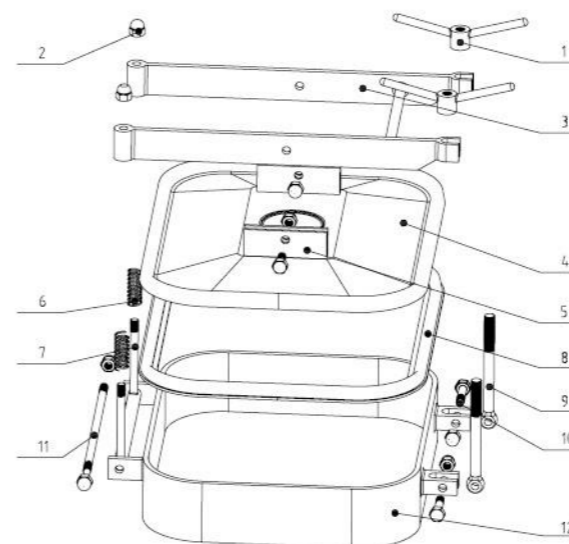
Rectangular Manway With Two Intersectant Arms

How To Order

Type	Size	Material	Inner Surf	Outer Surf
WZE	435X335	304	0.8µm-0.4µm	0.8µm-0.4µm
Qty	Handwheel-Num	Height	Gasket	Pressure
20	2 Y stainless steel	80mm	Silicone	0-1 bar



Exploded parts diagram

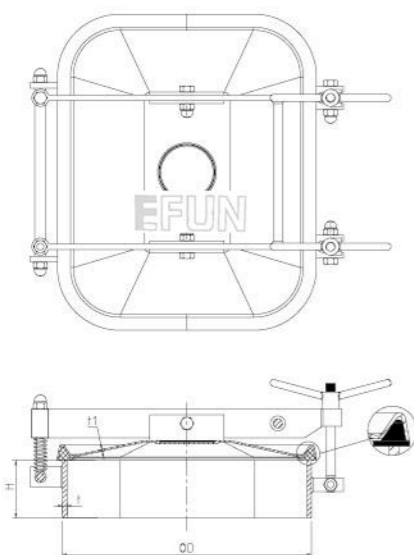


Technical requirements

- Gasket: Silicone/EPDM/NBR/FPM in accordance with FDA 177.2600.
- Material: 304(1.4301), 316L(1.4404)
- Internal surface: 0.8µm-0.4µm
- Outside surface: Mirror polished, Matte, sand-blasting finished.

Ltem	Description	Material	Qty
1	Top Nut	T304	2
2	Nut	T304	8
3	Bracket	T304	1
4	Cover	1.4301/1.4404	1
5	Up hinge support	T304	2
6	Spring	T304	2
7	Screw	T304	1
8	Gasket	EPDM	1
9	Swing bolt	T304	2
10	Screw	T304	4
11	Screw	T304	1
12	Frame	1.4301/1.4404	1

Dimensions



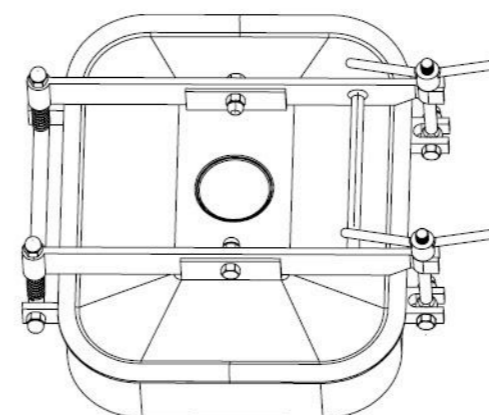
Standard size

At temperature 50°C/122°F

Size	OD mm	t mm	H mm	t1 mm	Pres (Bar)
435x335	435x335	8	80-200	3	0-1
450x350	450x350	8	80-200	3	0-1
535x415	535x415	10	80-200	3	0-1
555x432	555x432	10	80-200	3	0-1
700x500	700x500	12	80-200	3	0-1

IF YOU WANT TO CHECK FOR MORE DETAILS
PLEASE CHECK THE FOLLOWING DRAWING
x1BAR ≈14.5PSI≈0.1MPA

Schematic diagram



GASKET

Material	Color
Silicon	White
EPDM	Black
FPM	Black

Options

Stainless steel finishes

Polished with RA(µ)

Bead blasted

Pickled: on request

Electro polished

WZE-2

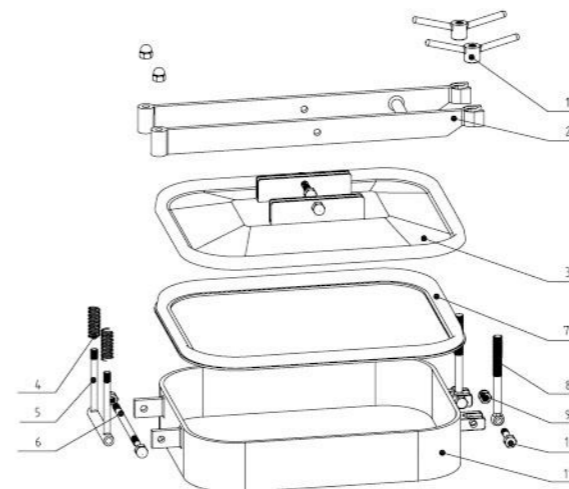
Rectangular Manway With Two Intersectant Arms

How To Order

Type	Size	Material	Inner Surf	Outer Surf
WZE-2	435X335	304	0.8µm-0.4µm	0.8µm-0.4µm
Qty	Handwheel-Num	Height	Gasket	Pressure
20	2 Y stainless steel	80mm	Silicone	0-1 bar



Exploded parts diagram

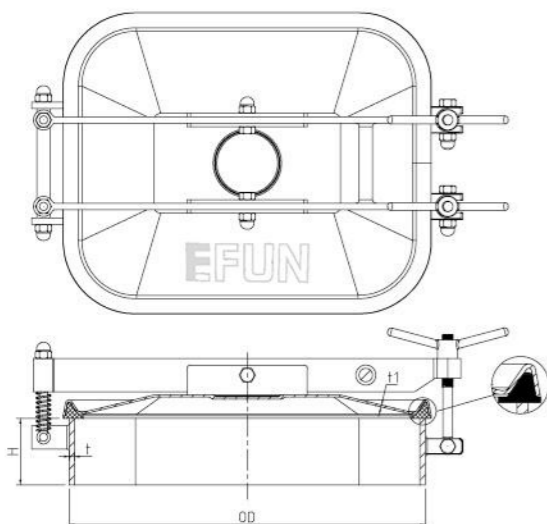


Technical requirements

- Gasket: Silicone/EPDM/NBR/FPM in accordance with FDA 177.2600.
- Material: 304(1.4301), 316L(1.4404)
- Internal surface: 0.8µm-0.4µm
- Outside surface: Mirror polished, Matte, sand-blasting finished.

Ltem	Description	Material	Qty
1	Handle	T304	2
2	Arm	T304	1
3	Cover	1.4301/1.4404	1
4	spring	T304	2
5	Back hinge sipport	T304	1
6	Screw	T304	1
7	Gasket	silicon	1
8	Swing boltt	T304	1
9	Nut	T304	8
10	Screw	T304	1
11	Frame	1.4301/1.4404	1

Dimensions



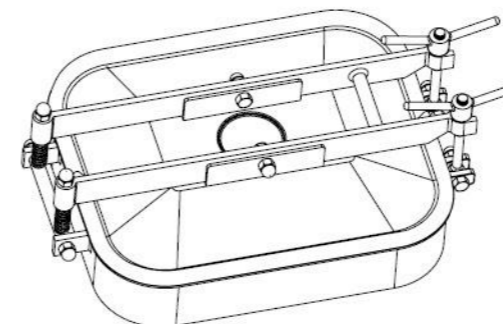
Standard size

At temperature 50°C/122°F

Size	OD mm	t mm	H mm	t1 mm	Pres (Bar)
435x335	435x335	8	80-200	3	0-1
450x350	450x350	8	80-200	3	0-1
535x415	535x415	10	80-200	3	0-1
555x432	555x432	10	80-200	3	0-1
700x500	700x500	12	80-200	3	0-1

IF YOU WANT TO CHECK FOR MORE DETAILS
PLEASE CHECK THE FOLLOWING DRAWING
x1BAR ≈14.5PSI≈0.1MPA

Schematic diagram



GASKET	
Material	Color
Silicon	White
EPDM	Black
FPM	Black

Options

Stainless steel finishes
Polished with RA(µ)
Bead blasted
Pickled: on request
Electro polished

WZE-B

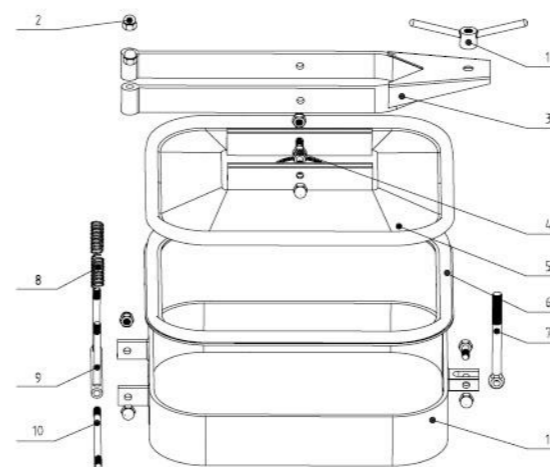
Rectangular Manway With One Intersectant Arms

How To Order

Type	Size	Material	Inner Surf	Outer Surf
WZE-B	435X335	304	0.8µm-0.4µm	0.8µm-0.4µm
Qty	Handwheel-Num	Height	Gasket	Pressure
20	1 Y stainless steel	80mm	Silicone	1-3bar



Exploded parts diagram

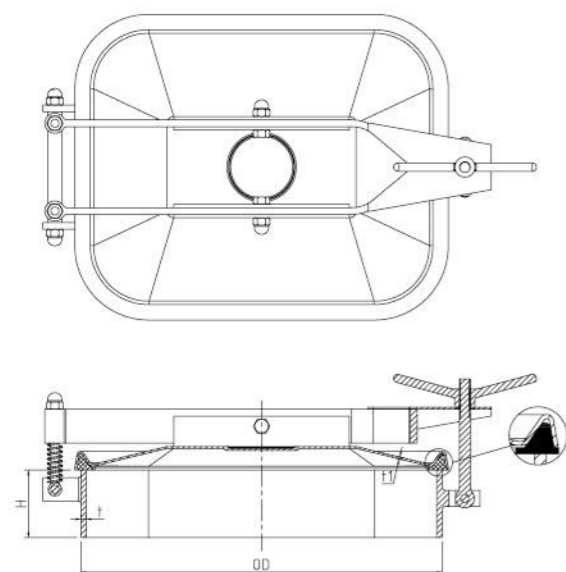


Technical requirements

- Gasket: Silicone/EPDM/NBR/FPM in accordance with FDA 177.2600.
- Material: 304(1.4301), 316L(1.4404)
- Internal surface: 0.8µm-0.4µm
- Outside surface: Mirror polished, Matte, sand-blasting finished.

Ltem	Description	Material	Qty
1	Top Nut	T304	1
2	Nut	T304	7
3	Arm	T304	1
4	Screw	T304	3
5	Cover	1.4301/1.4404	1
6	Gasket	Silicon	1
7	Swing bolt	T304	1
8	Spring	T304	2
9	Back hinge support	T304	1
10	Screw	T304	1
11	Frame	1.4301/1.4404	1

Dimensions



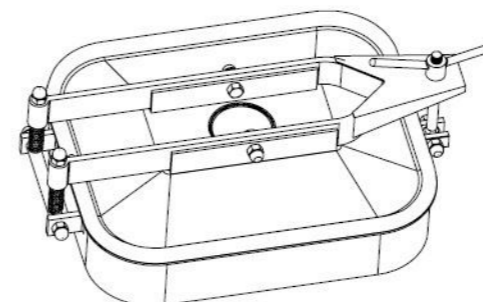
Standard size

At temperature 50°C/122°F

Size	OD mm	t mm	H mm	t1 mm	Pres (Bar)
435x335	435x335	8	80-200	3	0-1
450x350	450x350	8	80-200	3	0-1
535x415	535x415	10	80-200	3	0-1
555x432	555x432	10	80-200	3	0-1
700x500	700x500	12	80-200	3	0-1

IF YOU WANT TO CHECK FOR MORE DETAILS
PLEASE CHECK THE FOLLOWING DRAWING
x1BAR ≈14.5PSI≈0.1MPA

Schematic diagram



GASKET

Material	Color
Silicon	White
EPDM	Black
FPM	Black

Options

Stainless steel finishes

Polished with RA(µ)

Bead blasted

Pickled: on request

Electro polished

WZE-B-2

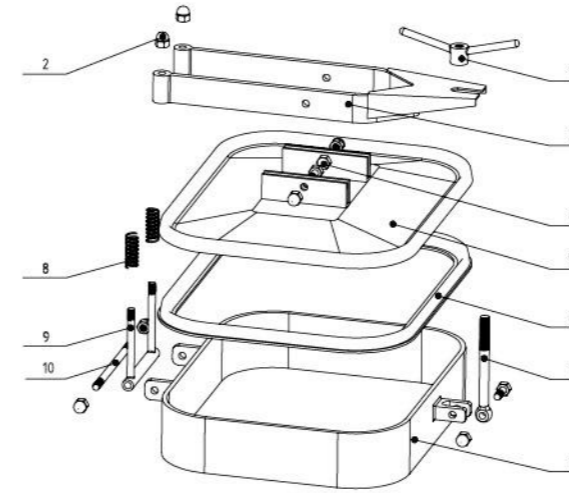
Rectangular Manway With One Intersectant Arms

How To Order

Type	Size	Material	Inner Surf	Outer Surf
WZE-B-2	435X335	304	0.8µm-0.4µm	0.8µm-0.4µm
Qty	Handwheel-Num	Height	Gasket	Pressure
20	1 Y stainless steel	80mm	Silicone	0-1 bar



Exploded parts diagram

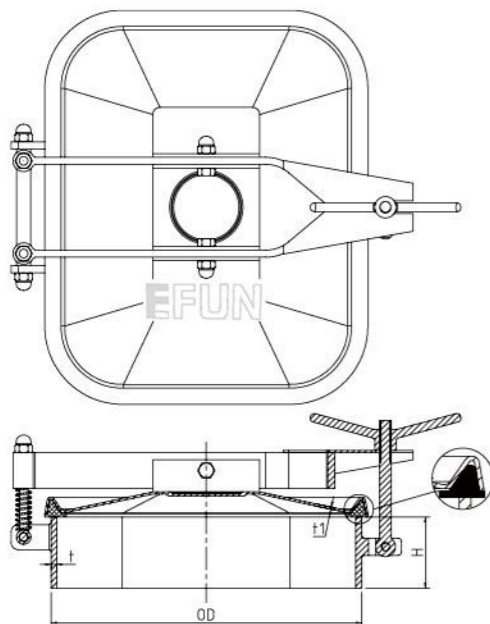


Technical requirements

- Gasket: Silicone/EPDM/NBR/FPM in accordance with FDA 177.2600.
- Material: 304(1.4301), 316L(1.4404)
- Internal surface: 0.8µm-0.4µm
- Outside surface: Mirror polished, Matte, sand-blasting finished.

Ltem	Description	Material	Qty
1	Top Nut	T304	1
2	Nut	T304	7
3	Arm	T304	1
4	Screw	T304	3
5	Cover	1.4301/1.4404	1
6	Gasket	Silicon	1
7	Swing bolt	T304	1
8	Spring	T304	2
9	Back hinge support	T304	1
10	Screw	T304	1
11	Frame	1.4301/1.4404	1

Dimensions



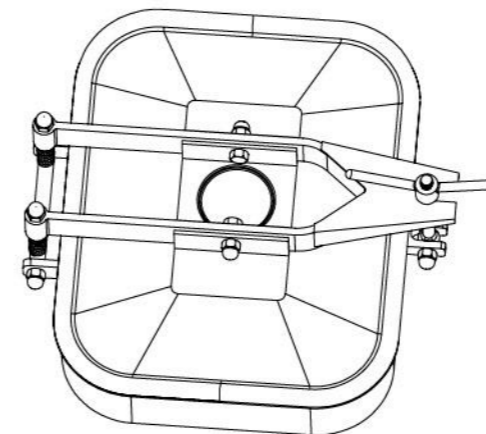
Standard size

At temperature 50°C/122°F

Size	OD mm	t mm	H mm	t1 mm	Pres (Bar)
435x335	435x335	8	80-200	3	0-1
450x350	450x350	8	80-200	3	0-1
535x415	535x415	10	80-200	3	0-1
555x432	555x432	10	80-200	3	0-1
700x500	700x500	12	80-200	3	0-1

IF YOU WANT TO CHECK FOR MORE DETAILS
PLEASE CHECK THE FOLLOWING DRAWING
x1BAR ≈14.5PSI≈0.1MPA

Schematic diagram



GASKET

Material	Color
Silicon	White
EPDM	Black
FPM	Black

Options

- Stainless steel finishes
- Polished with RA(µ)
- Bead blasted
- Pickled: on request
- Electro polished

WZE-C

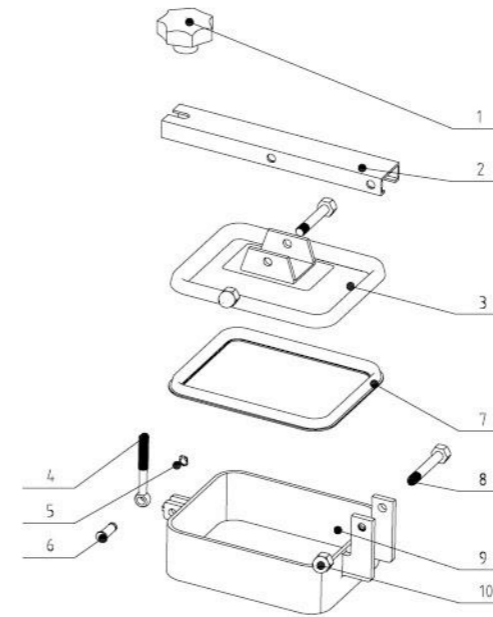
Rectangular Manway With One Intersectant Arms

How To Order

Type	Size	Material	Inner Surf	Outer Surf
WZE-C	325X260	304	0.8µm-0.4µm	0.8µm-0.4µm
Qty	Handwheel-Num	Height	Gasket	Pressure
20	1 Plastic	80mm	Silicone	0-1 bar



Exploded parts diagram

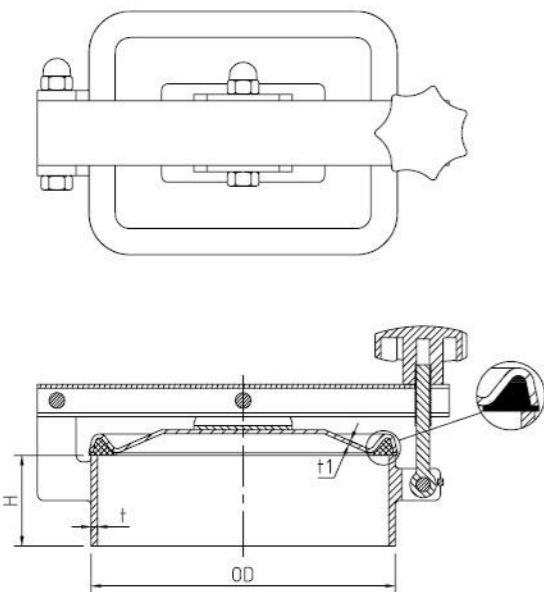


Technical requirements

- Gasket: Silicone/EPDM/NBR/FPM in accordance with FDA 177.2600.
- Material: 304(1.4301), 316L(1.4404)
- Internal surface: 0.8µm-0.4µm
- Outside surface: Mirror polished, Matte, sand-blasting finished.

Ltem	Description	Material	Qty
1	Handle	T304	1
2	Bracket	T304	1
3	Cover	1.4301/1.4404	1
4	Swing bolt	T304	1
5	Lock ring	T304	1
6	pin	T304	1
7	Gasket	Silicon	1
8	Screw	T304	2
9	Frame	1.4301/1.4404	1
10	Nut	T304	2

Dimensions



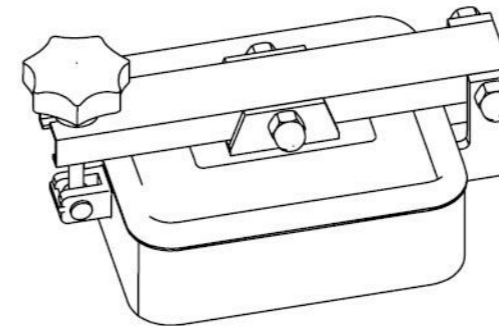
Standard size

At temperature 50°C/122°F

Size	OD mm	t mm	H mm	t1 mm	Pres (Bar)
235x185	235x185	5	75-200	1.5	0-1
280x220	280x220	5	75-200	1.5	0-1
325x260	325x260	5	75-200	1.5	0-1

IF YOU WANT TO CHECK FOR MORE DETAILS
PLEASE CHECK THE FOLLOWING DRAWING
x1BAR ≈14.5PSI≈0.1MPA

Schematic diagram



GASKET	
Material	Color
Silicon	White
EPDM	Black
FPM	Black

Options

Stainless steel finishes
Polished with RA(µ)
Bead blasted
Pickled: on request
Electro polished

WZE-C-2

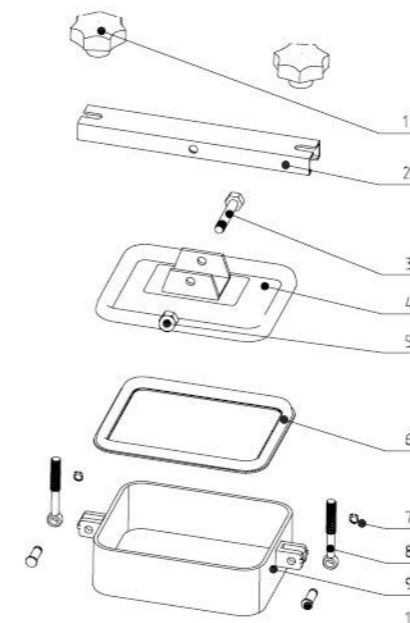
Rectangular Manway With One Intersectant Arms

How To Order

Type	Size	Material	Inner Surf	Outer Surf
WZE-C-2	325X260	304	0.8µm-0.4µm	0.8µm-0.4µm
Qty	Handwheel-Num	Height	Gasket	Pressure
20	2 Plastic	80mm	Silicone	0-1 bar



Exploded parts diagram

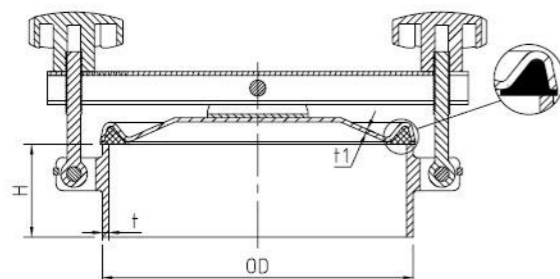
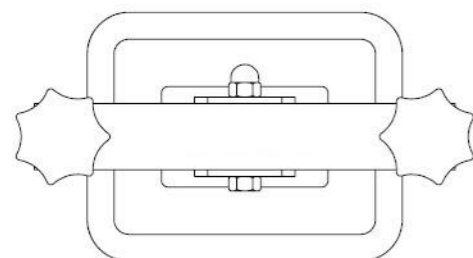


Technical requirements

- Gasket: Silicone/EPDM/NBR/FPM in accordance with FDA 177.2600.
- Material: 304(1.4301), 316L(1.4404)
- Internal surface: 0.8µm-0.4µm
- Outside surface: Mirror polished, Matte, sand-blasting finished.

Ltem	Description	Material	Qty
1	Handle	T304	1
2	Bracket	T304	1
3	Screw	T304	1
4	Cover	1.4301/1.4404	1
5	Nut	T304	1
6	Gasket	Silicon	1
7	Lock ring	T304	1
8	Swing bolt	T304	1
9	Frame	1.4301/1.4404	1
10	pin	T304	1

Dimensions



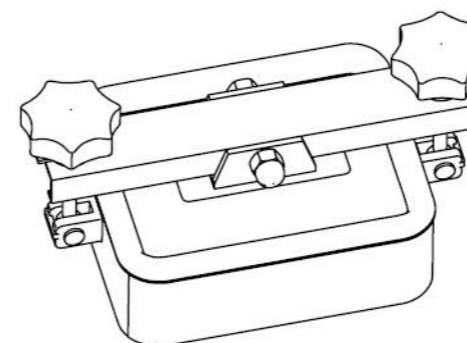
Standard size

At temperature 50°C/122°F

Size	OD mm	t mm	H mm	t1 mm	Pres (Bar)
235x185	235x185	5	75-200	1.5	0-1
280x220	280x220	5	75-200	1.5	0-1
325x260	325x260	5	75-200	1.5	0-1

IF YOU WANT TO CHECK FOR MORE DETAILS
PLEASE CHECK THE FOLLOWING DRAWING
x1BAR ≈14.5PSI≈0.1MPA

Schematic diagram



GASKET

Material	Color
Silicon	White
EPDM	Black
FPM	Black

Options

Stainless steel finishes

Polished with RA(µ)

Bead blasted

Pickled: on request

Electro polished

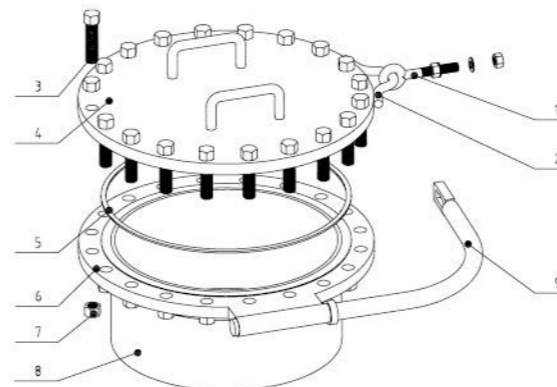
WZF shell manway

How To Order

Type	Size	Material	Inner Surf	Outer Surf
WZF	DN450	304	0.8µm-0.4µm	0.8µm-0.4µm
Qty	Swivel arm	Height	Gasket	Pressure
20	1	340mm	PTFE	1-1.6 Mpa



Exploded parts diagram

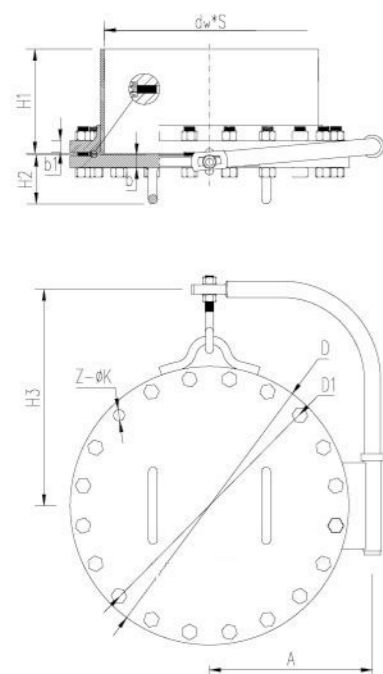


Technical requirements

- Gasket: Silicone Non-metallicflat gasket/PTFE in accordance with HG/T 21520.
- Material: 304(1.4301), 316L(1.4404)
- Internal surface: 0.8µm-0.4µm
- Outside surface: Mirror polished, Matte, sand-blasting finished.

Ltem	Description	Material
1	Lifting hook	Q235B
2	Lifting ring	Q235B
3	bolt	35CrMoA
4	Flange cover	Q235B
5	Sealing ring	Non-metallicflat gasket
6	Flange	Q235B
7	Nut	30CrMoA
8	Tube section	Q235B
9	jib	Q235B

Dimensions



Standard size

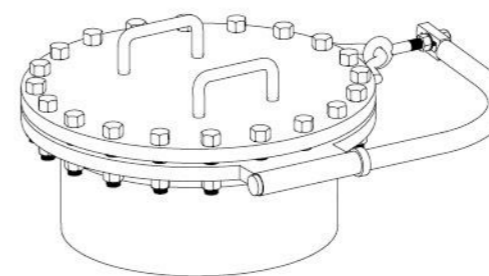
At temperature 50°C/122°F

PN10										
Size mm	dwxs mm	D mm	D1 mm	A mm	H1 mm	H2 mm	H3 mm	b mm	b1 mm	Z-Øk mm
DN450	480x8/480x6	615	565	360	230	108	478	26	28	20xØ26
DN500	480x8/530x6	670	620	385	250	108	505	26	28	20xØ26
DN600	630x8/630x6	780	725	440	270	114	560	32	34	20xØ29

PN16										
Size mm	dwxs mm	D mm	D1 mm	A mm	H1 mm	H2 mm	H3 mm	b mm	b1 mm	Z-Øk mm
DN450	480x10/480x8	640	585	370	240	120	490	40	38	20xØ28
DN500	530x10/530x8	715	650	410	260	124	528	44	42	20xØ32
DN600	630x10/630x8	840	770	475	280	134	590	54	52	20xØ35

IF YOU WANT TO CHECK FOR MORE DETAILS
PLEASE CHECK THE FOLLOWING DRAWING
x1BAR ≈14.5PSI≈0.1MPA

Schematic diagram



GASKET	
PTFE	white

Options

Stainless steel finishes
Polished with RA(µ)
Bead blasted
Pickled: on request
Electro polished

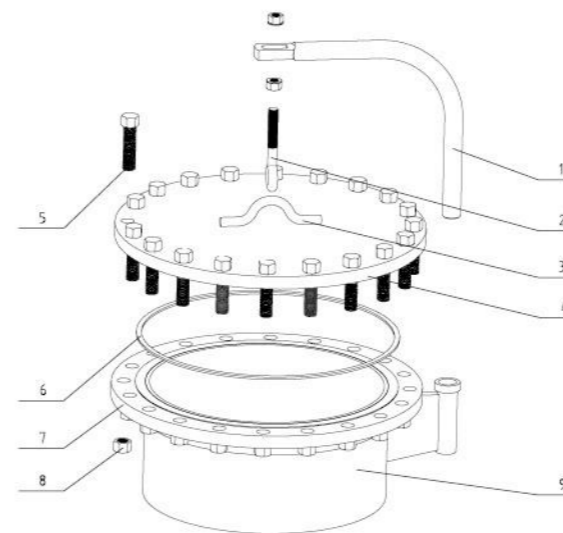
WZF-2 shell manway

How To Order

Type	Size	Material	Inner Surf	Outer Surf
WZF-2	DN450	304	0.8µm-0.4µm	0.8µm-0.4µm
Qty	Swivel arm	Height	Gasket	Pressure
20	1	100mm	Silicone	1-3 bar



Exploded parts diagram

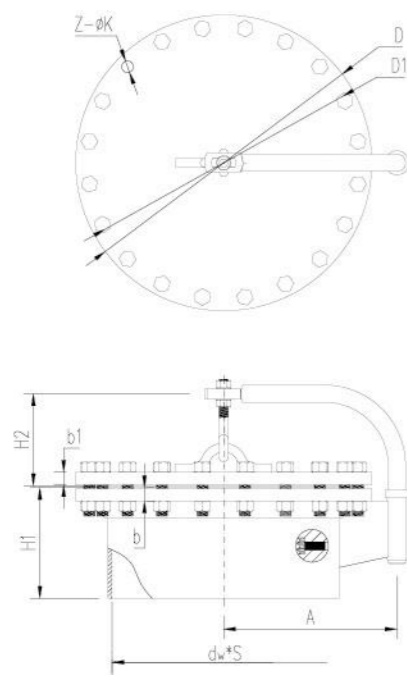


Technical requirements

- Gasket: Silicone Non-metallicflat gasket/PTFE in accordance with HG/T 21520.
- Material: 304(1.4301), 316L(1.4404)
- Internal surface: 0.8µm-0.4µm
- Outside surface: Mirror polished, Matte, sand-blasting finished.

Ltem	Description	Material
1	jib	Q235B
2	Lifting hook	Q235B
3	Lifting ring	Q235B
4	Flange cover	Q235B
5	bolt	35CrMoA
6	Sealing ring	Non-metallicflat gasket
7	Flange	Q235B
8	Nut	30CrMoA
9	Tube section	Q235B

Dimensions



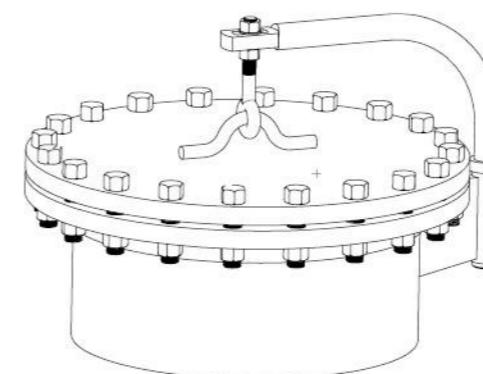
Standard size

At temperature 50°C/122°F

PN10									
Size	dwxs mm	D mm	D1 mm	A mm	H1 mm	H2 mm	b mm	b1 mm	Z-Øk mm
DN450	480x8/480x6	615	565	355	290	198	28	26	20xØ26
DN500	530x8/530x6	670	620	380	300	198	28	26	20xØ26
DN600	630x8/630x6	780	725	435	320	204	28	32	20xØ29
PN16									
Size mm	dwxs mm	D mm	D1 mm	A mm	H1 mm	H2 mm	b mm	b1 mm	Z-ØK mm
DN450	480x10/480x8	640	585	365	300	210	40	38	20xØ29
DN500	530x10/530x8	715	650	405	320	214	44	42	20xØ32
DN600	630x10/630x8	840	770	470	340	224	54	52	20xØ35

IF YOU WANT TO CHECK FOR MORE DETAILS
PLEASE CHECK THE FOLLOWING DRAWING
x1BAR ≈14.5PSI≈0.1MPA

Schematic diagram



GASKET	
Material	Color
Non-metallicflat gasket	
PTFE	white

Options

Stainless steel finishes
Polished with RA(µ)
Bead blasted
Pickled: on request
Electro polished

WZG

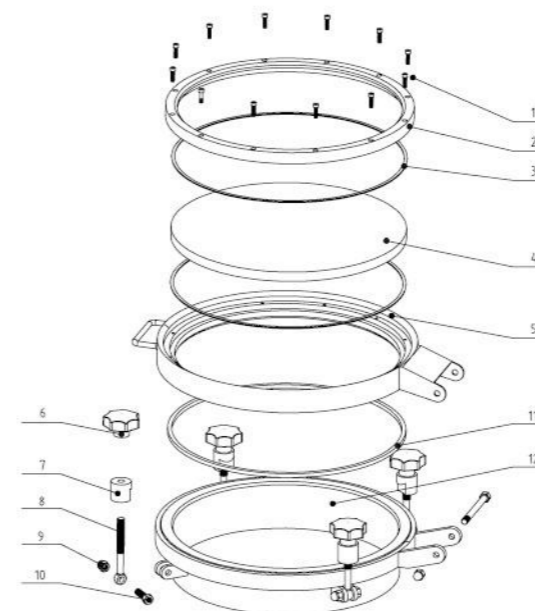
Sight Glass Manway

How To Order

Type	Size	Material	Inner Surf	Outer Surf
WZG	DN300	304	0.8µm-0.4µm	0.8µm-0.4µm
Qty	Handwheel-Num	Height	Gasket	Pressure
20	4 Plastic	100mm	Silicone	0-3 bar



Exploded parts diagram

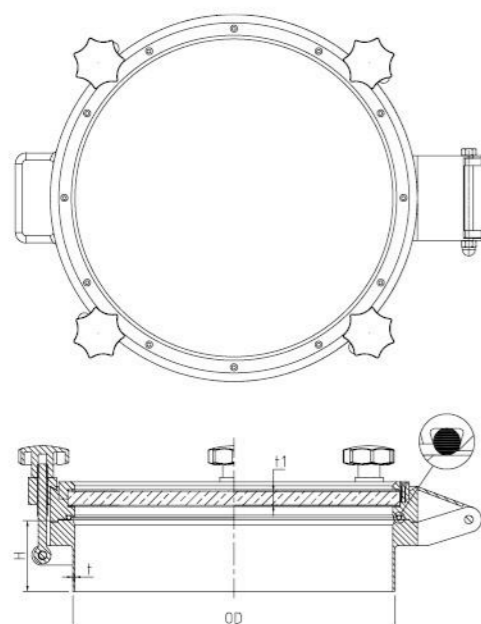


Technical requirements

- Gasket: Silicone/EPDM/NBR/FPM in accordance with FDA 177.2600.
- Material: 304(1.4301), 316L(1.4404)
- Internal surface: 0.8µm-0.4µm
- Outside surface: Mirror polished, Matte, sand-blasting finished.

Ltem	Description	Material	Qty
1	Screw	T304	12
2	Flange	T304	1
3	Seal	PTFE	2
4	Singht glass	Tempered galss	1
5	Cover	1.4301/1.4404	1
6	Handle	plastic/1.4301	4
7	Hub	plastic/1.4301	4
8	Swing Bolt	304	4
9	Nut	T304	5
10	Screw	T304	5
11	Gasket	silicon	1
12	Frame	1.4301/1.4404	1

Dimensions



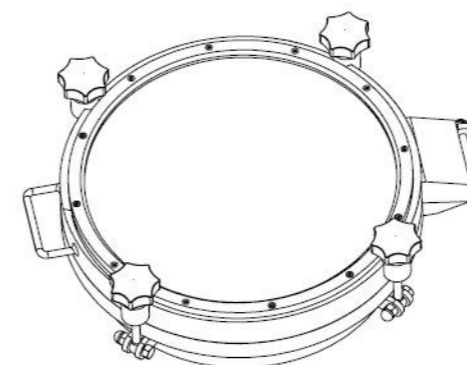
Standard size

At temperature 50°C/122°F

Size mm	OD mm	t mm	H mm	t1 mm	Hand Num	Pres (Bar)
DN300	Ø308	4	80-200	12	4	0-3
DN350	Ø358	4	80-200	12	4	0-3
DN400	Ø408	4	80-200	12	4	0-3
DN450	Ø458	4	80-200	12	4	0-3
DN500	Ø508	4	80-200	12	4	0-3
DN600	Ø608	4	80-200	15	6	0-3

IF YOU WANT TO CHECK FOR MORE DETAILS
PLEASE CHECK THE FOLLOWING DRAWING
x1BAR ≈14.5PSI≈0.1MPA

Schematic diagram



GASKET

Material	Color
Silicon	White
EPDM	Black
FPM	Black

Options

- Stainless steel finishes
- Polished with RA(µ)
- Bead blasted
- Pickled: on request
- Electro polished

WZG-2

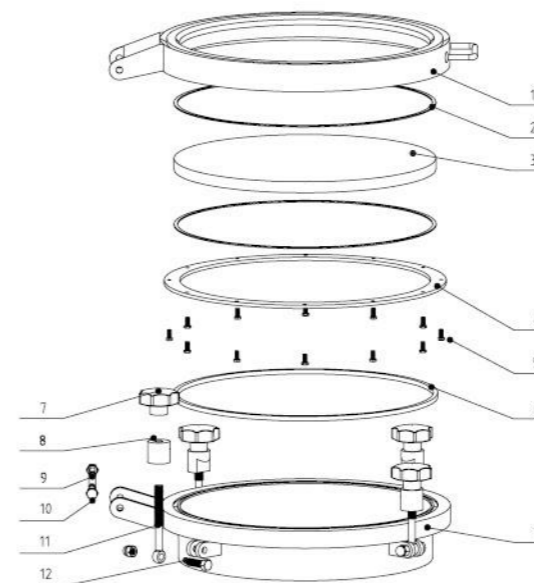
Sight Glass Manway

How To Order

Type	Size	Material	Inner Surf	Outer Surf
WZG-2	DN300	304	0.8µm-0.4µm	0.8µm-0.4µm
Qty	Handwheel-Num	Height	Gasket	Pressure
20	4 Plastic	100mm	Silicone	0-3 bar



Exploded parts diagram

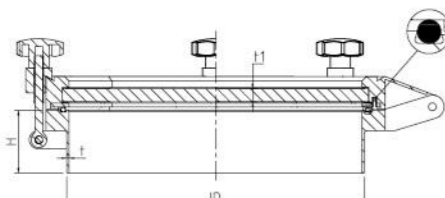
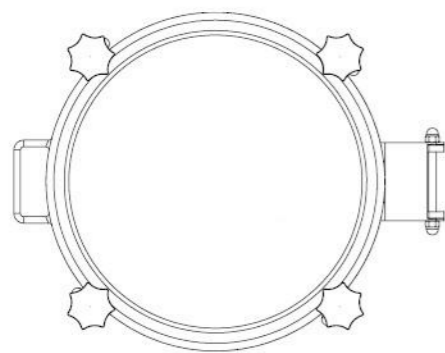


Technical requirements

- Gasket: Silicone/EPDM/NBR/FPM in accordance with FDA 177.2600.
- Material: 304(1.4301), 316L(1.4404)
- Internal surface: 0.8µm-0.4µm
- Outside surface: Mirror polished, Matte, sand-blasting finished.

Ltem	Description	Material	Qty
1	Cover	1.4301/1.4404	1
2	Seal	PTFE	2
3	Glass	Tempered glass	1
4	Flange	T304	1
5	Swing Bolt	304	12
6	Gasket	silicon	1
7	Handle	plastic/1.4301	4
8	Hub	plastic/1.4301	4
9	Screw	T304	1
10	Nut	T304	6
11	Swing Bolt	T304	1
12	Screw	T304	4
13	Frame	1.4301/1.4404	1

Dimensions



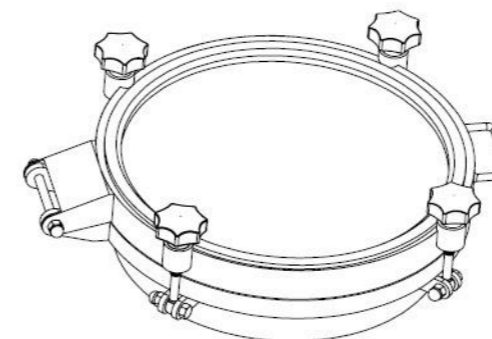
Standard size

At temperature 50°C/122°F

Size mm	OD mm	t mm	H mm	t1 mm	Hand Num	Pres (Bar)
DN300	Ø308	4	80-200	12	4	0-3
DN350	Ø358	4	80-200	12	4	0-3
DN400	Ø408	4	80-200	12	4	0-3
DN450	Ø458	4	80-200	12	4	0-3
DN500	Ø508	4	80-200	12	4	0-3
DN600	Ø608	4	80-200	15	6	0-3

IF YOU WANT TO CHECK FOR MORE DETAILS
PLEASE CHECK THE FOLLOWING DRAWING
x1BAR ≈14.5PSI≈0.1MPA

Schematic diagram



GASKET

Material	Color
Silicon	White
EPDM	Black
FPM	Black

Options

Stainless steel finishes

Polished with RA(µ)

Bead blasted

Pickled: on request

Electro polished

Gasket

Storage Conditions For Gaskets

Optimal use in service and the lifetime of a gasket depend essentially on the storage conditions prior to use.

The ageing resistance of gasket at rest differs considerably according to the elastomers.

Nevertheless, all our gasket benefit from a 1-year storage lifetime guarantee provided that you comply with the following storage conditions :

- ◆ gasket laid flat and tension-free
- ◆ at ambient temperature
- ◆ away from direct light, heat and bad weather
- ◆ away from all sources of ozone (anti-static bars, etc.)

These conditions are valid for all types of elastomers.

The above information is based on reliable data sent by our suppliers and cannot in any circumstances involve our liability.

Ordering Information:

Selected according to the characteristics of the product you need, please order as follows: 1. Material
2. Quantity

Type of gasket	Alakline	Acid	Maximum temperature*
Food quality gasket			
EPDM	Excellent	Good	-40°C /+ 130°C
SILICON	Good	Ok	-50°C /+250°C
F.P.M.(VITON®)	Excellent	Excellent	-10°C /+200°C
NITRILE(NRB)	Good	Good	-10°C /+110°C
PTFE	PTFE	Excellent	-200°C /+260°C

Note: Either the temperature of the liquid in contact, or by the duration of the contact can highly influence the chemical resistance of rubbers, or in the case of chemical solutions, by the concentration of the active product. The resistance values are given as a guide only and may be modified by the following determinant factors: constitution of the rubber mix, variable temperatures, variable loads or stretching, atmospheric agents, exposure time, etc...

Gasket profile

Lip-seated gasket



O-ring gasket



O-ring gasket



Half-round gasket



Rectangular gasket

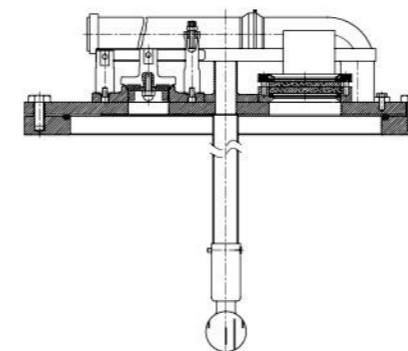
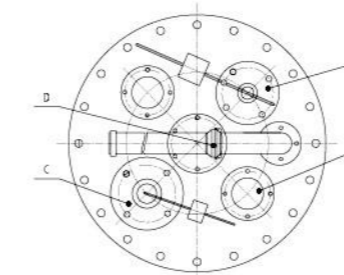


7P gasket



GAZ-2S

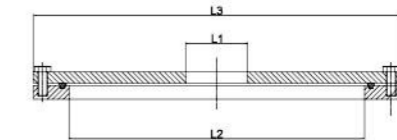
Tank-top Safety Sanitary Assembly



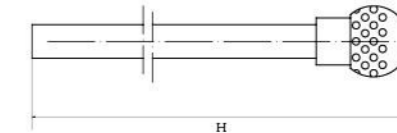
Flange combination-1



Flange combination-2



CIP Cleaning Tube



Size	A	B	C	D	L1	L2	L3	t	H
DN500						500	600	20	
DN500A						500	620	20	
DN600	DN50	DN80	DN80	DN50	100/125	600	700	20	1200
DN600A						600	720	22	
DN600B						600	750	24	

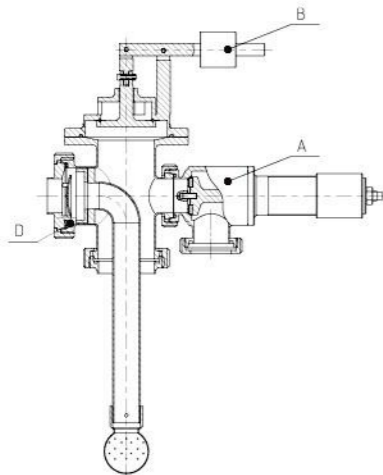
Pressure Relief Valve (A), Anti-Vacuum Valve(B), Check valve(D), can be changed according to your requirement.

Feature:

- Gasket: Silicone/EPDM/NBR/FPM in accordance with FDA 177.2600.
- Material: 304(1.4301), 316L(1.4404)
- Internal surface: 0.8µm-0.4µm
- Outside surface: Mirror polished, Matte, sand-blasting finished.

GAZ-GER

Sanitary tank-top assembly



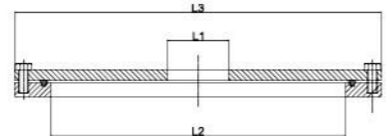
How To Order

Type	Size	Inner Surf	Outer Surf
GAZ-GER	DN600	0.8µm-0.4µm	0.8µm-0.4µm
Qty	Gasket	Material	Pressure
20	Silicone	304	1-3bar

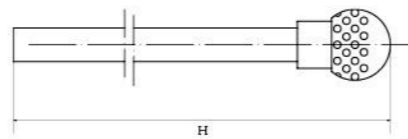
Flange combination-1



Flange combination-2



CIP Cleaning Tube



STANDARD SIZE

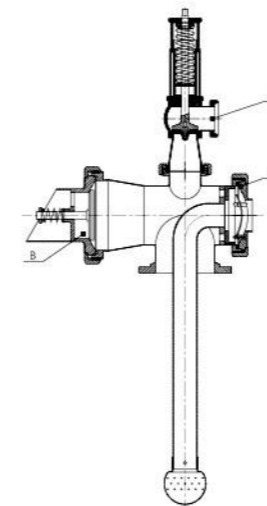
Size	A	B	D	H
DN80	DN20-DN50	DN65	DN20-DN50	1200
DN100	DN20-DN50	DN65	DN20-DN50	1200
DN125	DN20-DN50	DN80	DN50-DN80	1200
DN150	DN20-DN50	DN80	DN50-DN80	1200
DN200	DN20-DN50	DN80	DN50-DN80	1200

Pressure Relief Valve (A), Anti-Vacuum Valve(B), Check valve(D), can be changed according to your requirement.

- Feature:
- Gasket: Silicone/EPDM/NBR/FPM in accordance with FDA 177.2600.
 - Material: 304(1.4301), 316L(1.4404)
 - Internal surface: 0.8µm-0.4µm
 - Outside surface: Mirror polished, Matte, sand-blasting finished.

GAZ-GER-2

Sanitary tank-top assembly

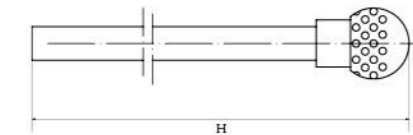


How To Order

Type	Size	Inner Surf	Outer Surf
GAZ-GER-2	DN600	0.8µm-0.4µm	0.8µm-0.4µm
Qty	Gasket	Material	Pressure
20	Silicone	304	1-3bar

- Feature:
- Gasket: Silicone/EPDM/NBR/FPM
 - Material: 304(1.4301), 316L(1.4404)
 - Internal surface: 0.8µm-0.4µm
 - Outside surface: Mirror polished, Matte, sand-blasting finished.

CIP Cleaning Tube



STANDARD SIZE

Size	A	B	D	H
DN80	DN20-DN50	DN65	DN20-DN50	1200
DN100	DN20-DN50	DN65	DN20-DN50	1200
DN125	DN20-DN50	DN80	DN50-DN80	1200
DN150	DN20-DN50	DN80	DN50-DN80	1200
DN200	DN20-DN50	DN80	DN50-DN80	1200

Pressure Relief Valve (A), Anti-Vacuum Valve(B), Check valve(D), can be changed according to your requirement.

- Feature:
- Gasket: Silicone/EPDM/NBR/FPM in accordance with FDA 177.2600.
 - Material: 304(1.4301), 316L(1.4404)
 - Internal surface: 0.8µm-0.4µm
 - Outside surface: Mirror polished, Matte, sand-blasting finished.

GAZ-4D

Sanitary tank-top assembly



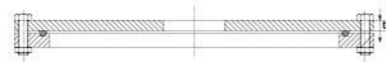
How To Order

Type	Size	Inner Surf	Outer Surf
GAZ-4D	DN600	0.8µm-0.4µm	0.8µm-0.4µm
Qty	Gasket	Material	Pressure
20	Silicone	304	1-3bar

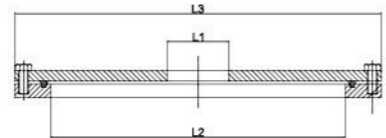
Feature:

- Gasket: Silicone/EPDM/NBR/FPM
- Material: 304(1.4301), 316L(1.4404)
- Internal surface: 0.8µm-0.4µm
- Outside surface: Mirror polished, Matte, sand-blasting finished.

Flange combination-1



Flange combination-2



CIP Cleaning Tube



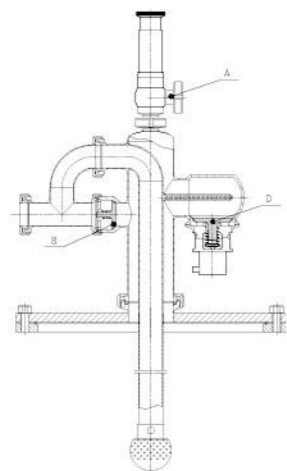
STANDARD SIZE

Size	A	B	C	D	L1	L2	L3	t	H
DN500						500	600	20	
DN500A						500	620	20	
DN600	DN50	DN80	DN80	DN50	100/125	600	700	20	1200
DN600A						600	720	22	
DN600B						600	750	24	

Pressure Relief Valve (A), Anti-Vacuum Valve(B), Check valve(D), can be changed according to your requirement.

Feature:

- Gasket: Silicone/EPDM/NBR/FPM in accordance with FDA 177.2600.
- Material: 304(1.4301), 316L(1.4404)
- Internal surface: 0.8µm-0.4µm
- Outside surface: Mirror polished, Matte, sand-blasting finished.



GAZ-1D

Roof installation



How To Order

Type	Size	Inner Surf	Outer Surf
GAZ-1D	DN600	0.8µm-0.4µm	0.8µm-0.4µm
Qty	Gasket	Material	Pressure
20	Silicone	304	1-3bar

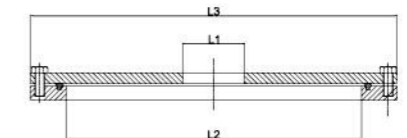
Feature:

- Gasket: Silicone/EPDM/NBR/FPM
- Material: 304(1.4301), 316L(1.4404)
- Internal surface: 0.8µm-0.4µm
- Outside surface: Mirror polished, Matte, sand-blasting finished.

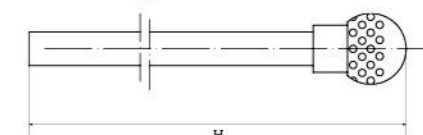
Flange combination-1



Flange combination-2



CIP Cleaning Tube



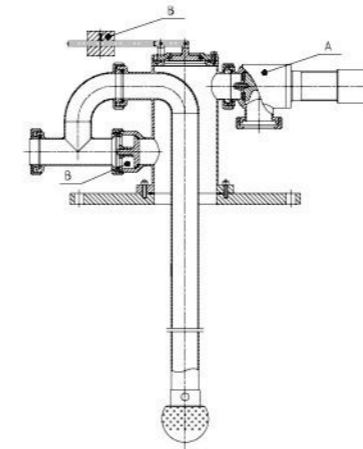
STANDARD SIZE

Size	A	B	C	D	L1	L2	L3	t	H
DN500						500	600	20	
DN500A						500	620	20	
DN600	DN50	DN80	DN80	DN50	100/125	600	700	20	1200
DN600A						600	720	22	
DN600B						600	750	24	

Pressure Relief Valve (A), Anti-Vacuum Valve(B), Check valve(D), can be changed according to your requirement.

Feature:

- Gasket: Silicone/EPDM/NBR/FPM in accordance with FDA 177.2600.
- Material: 304(1.4301), 316L(1.4404)
- Internal surface: 0.8µm-0.4µm
- Outside surface: Mirror polished, Matte, sand-blasting finished.



GAZ-3D

Roof installation



How To Order

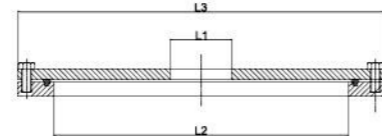
Type	Size	Inner Surf	Outer Surf
GAZ-3D	DN600	0.8µm-0.4µm	0.8µm-0.4µm
Qty	Gasket	Material	Pressure
20	Silicone	304	1-3bar

- Feature:
- Gasket: Silicone/EPDM/NBR/FPM
 - Material: 304(1.4301), 316L(1.4404)
 - Internal surface: 0.8µm-0.4µm
 - Outside surface: Mirror polished, Matte, sand-blasting finished.

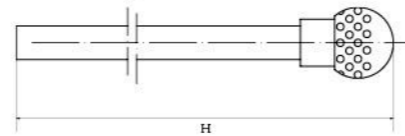
Flange combination-1



Flange combination-2



CIP Cleaning Tube

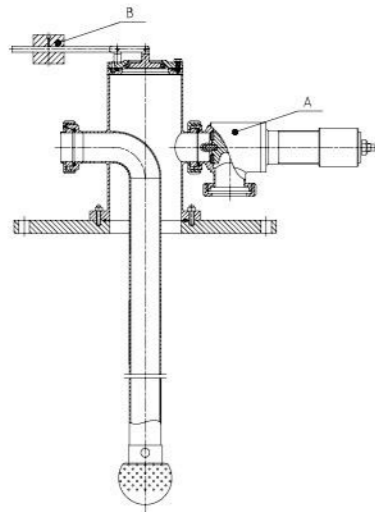


STANDARD SIZE

Size	A	B	C	D	L1	L2	L3	t	H
DN500						500	600	20	
DN500A						500	620	20	
DN600	DN50	DN80	DN80	DN50	100/125	600	700	20	1200
DN600A						600	720	22	
DN600B						600	750	24	

Pressure Relief Valve (A), Anti-Vacuum Valve(B), can be changed according to your requirement.

- Feature:
- Gasket: Silicone/EPDM/NBR/FPM in accordance with FDA 177.2600.
 - Material: 304(1.4301), 316L(1.4404)
 - Internal surface: 0.8µm-0.4µm
 - Outside surface: Mirror polished, Matte, sand-blasting finished.



SVB

Sanitary Small Cone of Tank



Sanitary Small Cone of Tank
Model SVB-1

How To Order

Type	Size	Material	Inner Surf	Outer Surf
SVB-1	Ø450	304	0.8µm-0.4µm	0.8µm-0.4µm
Qty	Handwheel-Num	Height	Gasket	Pressure
20	8 Plastic	100mm	Silicone	

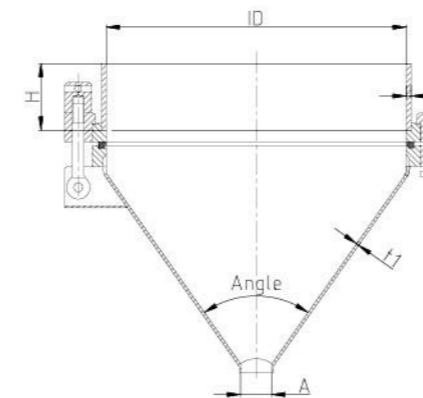
Dimensions table:

Size	ID	A	H	Angel	t	t1
450	Ø450	DN50-DN80	100	60° /75°	6	4
500	Ø500	DN50-DN80	100	60° /75°	6	4

Height(H),Angel(Angel), Frame (t) and cover (t1), can be changed according to your requirement.

- Feature:
- Gasket: Silicone/EPDM/NBR/FPM in accordance with FDA 177.2600.
 - Material: 304(1.4301), 316L(1.4404)
 - Internal surface: 0.8µm-0.4µm
 - Outside surface: Mirror polished, Matte, sand-blasting finished.

Dimensions



GASKET	
Material	Color
Silicon	White
EPDM	Black
FPM	Black

Options

- Stainless steel finishes
- Polished with RA(µ)
- Bead blasted
- Pickled: on request
- Electro polished

SVB-2

Sanitary Small Cone of Tank



How To Order

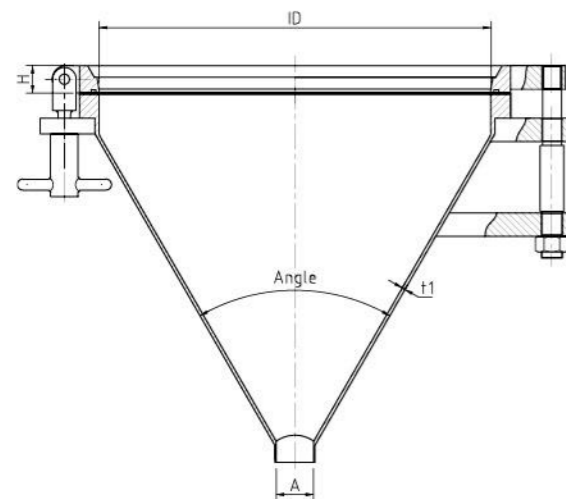
Type	Size	Material	Inner Surf	Outer Surf
SVB-2	Ø450	304	0.8µm-0.4µm	0.8µm-0.4µm
Qty	Handwheel-Num	Height	Gasket	Pressure
20	8 Plastic	100mm	Silicone	

Dimensions table:

Size	ID	A	H	Angel	t1
450	Ø450	DN50-DN80	35	60° /75°	4
500	Ø500	DN50-DN80	35	60° /75°	4

Height(H),Angel(Angel), Frame (t) and cover (t1), can be changed according to your requirement.

- Feature:
- Gasket: Silicone/EPDM/NBR/FPM in accordance with FDA 177.2600.
 - Material: 304(1.4301), 316L(1.4404)
 - Internal surface: 0.8µm-0.4µm
 - Outside surface: Mirror polished, Matte, sand-blasting finished.



GASKET	
Material	Color
Silicon	White
EPDM	Black
FPM	Black

Options

Stainless steel finishes
Polished with RA(µ)
Bead blasted
Pickled: on request
Electro polished

SVB-3

Sanitary Small Cone of Tank



Sanitary Small Cone of Tank
Model SVB-3

How To Order

Type	Size	Material	Inner Surf	Outer Surf
SVB-3	Ø450	304	0.8µm-0.4µm	0.8µm-0.4µm
Qty	Handwheel-Num	Height	Gasket	Pressure
20	8 Plastic	100mm	Silicone	

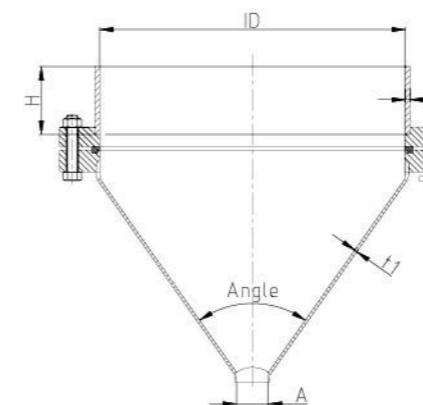
Dimensions table:

Size	ID	A	H	Angel	t	t1
450	Ø450	DN50-DN80	100	60° /75°	6	4
500	Ø500	DN50-DN80	100	60° /75°	6	4

Height(H),Angel(Angel), Frame (t) and cover (t1), can be changed according to your requirement.

- Feature:
- Gasket: Silicone/EPDM/NBR/FPM in accordance with FDA 177.2600.
 - Material: 304(1.4301), 316L(1.4404)
 - Internal surface: 0.8µm-0.4µm
 - Outside surface: Mirror polished, Matte, sand-blasting finished.

Dimensions



GASKET	
Material	Color
Silicon	White
EPDM	Black
FPM	Black

Options

Stainless steel finishes
Polished with RA(µ)
Bead blasted
Pickled: on request
Electro polished

Stainless Steel Adapter Board



Applications:

Compact in structure, one adapter board can connect 3-10 fermentation tanks; easy to connect, it not only can feed beerwort and discharge beer, but also clean big tanks at will, retrieve CO₂, pressurize, and clean the sampling port etc.; it adopts double-layer board structure, supported by square steel frame, the connecting elbow is easy to install and dismantle; it adopts import SUS304 stainless steel mirror board, both beautiful and sanitary; adopt adjustable flexible support, it is easy to install for pipeline; accurately-positioned pipe hole center, connecting pipe with high-precision size, reliable in sealing.



Tank other Equipment



Beerwort oxygen filling setting
(Automation was hes belt)



Beerwort oxygenation unit



Test desk of wheat juice

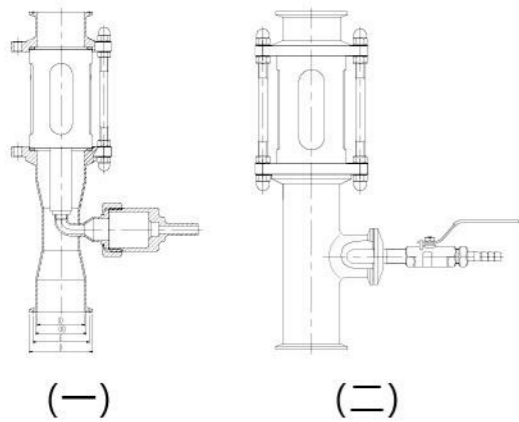


Hops pressure tank

Oxygen-charging

Beerwort oxygenation unit is a very important process in beer production. Results of oxygenation of beer will direct affect beer quality. This set of oxygenation unit is designed by our company based on several production experience and users' suggestions. With import and export specifications DN65, DN80, DN100

Oxygen-charging



How To Order

Type	Size	Inner Surf	Outer Surf
1 1/2"	1 1/2"	0.8μm-0.4μm	0.8μm-0.4μm
Qty	Gasket	Material	
20	Silicone	304	

Dimensions table:

Size mm	OD mm	D mm	E mm	ID mm
1 1/2"	Ø38.1	Ø50.5	Ø43.5	Ø35.7
2"	Ø50.8	Ø64	Ø56.5	Ø47.8
2 1/2"	Ø63.5	Ø77.5	Ø70.5	Ø59.5
3"	Ø76.3	Ø91	Ø83.5	Ø72.3
4"	Ø101.6	Ø106	Ø110	Ø97.6

Height(H), Angel(Angel), Frame (t) and cover (t1), can be changed according to your requirement.

Feature:

- Gasket: Silicone/EPDM/NBR/FPM in accordance with FDA 177.2600.
- Material: 304(1.4301), 316L(1.4404)
- Internal surface: 0.8μm-0.4μm
- Outside surface: Mirror polished, Matte, sand-blasting finished.

GASKET	
Material	Color
Silicon	White
EPDM	Black
FPM	Black

Options

Stainless steel finishes
Polished with RA(μ)
Bead blasted
Pickled: on request
Electro polished

各国不锈钢牌号 Stainless Steel Standards of Different Countries

中国	欧盟	美国	美国	英国	德国	日本
GB (China)	EN (Europa)	AISI (U.S.A)	ASTM (U.S.A)	BSI (U.K)	DIN (Germany)	JIS (Japan)
0Cr18Ni9	X5CrNi18-10	304	TP304	304 S 15 304 S 16	1.4301	SUS304
00Cr19Ni10	X2 CrNi9-11	304L	TP304L	304 S 11	1.4306	SUS304L
0Cr17Ni12M02	X5CrNiMo17-2-2	316	TP316	316 S 31	1.4401	SUS316
00Cr17Ni14M02	X2CrNiMo17-2-2	316L	TP316L	316 S 11	1.4404	SUS316L

化学成分与力学性能 Chemical Composition and Mechanics Property

中国 (GB)	钢种	碳 ≤	硅 ≤	锰 ≤	磷 ≤	硫 ≤	铬	钼	镍	力学性能			
		C	Si	Mn	P	S	Cr	Mo	Ni	屈服强度 σ _{0.2} (Mpa) ≥	抗拉强度 σ _b (Mpa) ≥	延伸率 δ 5 %	硬度 HB ≤
中国 (GB)	304	0.07	1.0	2.0	0.035	0.030	18.0-20.0	/	8.0-11	205	520	40	187
	304L	0.03	1.0	2.0	0.035	0.030	18.0-20.0	/	8.0-12	177	480	40	187
	316	0.08	1.0	2.0	0.035	0.030	16.0-18.5	2.0-3.0	10-14	205	520	40	187
	316L	0.03	1.0	2.0	0.035	0.030	16.0-18.0	2.0-3.0	12-15	177	480	40	187
美国 (ASTM)	钢种	碳 ≤	硅 ≤	锰 ≤	磷 ≤	硫 ≤	铬	钼	镍	力学性能			
		C	Si	Mn	P	S	Cr	Mo	Ni	屈服强度 σ _{0.2} (Mpa) ≥	抗拉强度 σ _b (Mpa) ≥	延伸率 δ 5 %	硬度 HB ≤
	TP304	0.08	0.75	2.0	0.040	0.030	18.0-20.0	/	8.0-11	205	515	35	187
	TP304L	0.035	0.75	2.0	0.040	0.030	18.0-20.0	/	8.0-13	170	485	35	187
TP316	0.08	0.75	2.0	0.040	0.030	16.0-18.0	2.0-2.5	10-14	205	515	35	187	
TP316L	0.035	0.75	2.0	0.040	0.030	16.0-18.0	2.0-2.5	12-15	170	485	35	187	
日本 (JIS)	钢种	碳 ≤	硅 ≤	锰 ≤	磷 ≤	硫 ≤	铬	钼	镍	力学性能			
		C	Si	Mn	P	S	Cr	Mo	Ni	屈服强度 σ _{0.2} (Mpa) ≥	抗拉强度 σ _b (Mpa) ≥	延伸率 δ 5 %	硬度 HB ≤
	304	0.08	1.0	2.0	0.040	0.030	18.0-20.0	/	8.0-11	206	520	35	187
	304L	0.03	1.0	2.0	0.040	0.030	18.0-20.0	/	9.0-13	177	481	35	187
316	0.08	1.0	2.0	0.040	0.030	16.0-18.0	2.0-3.0	10-14	206	520	35	187	
316L	0.03	1.0	2.0	0.040	0.030	16.0-18.0	2.0-3.0	12-16	177	481	35	187	
美国 (AISI) 英国 (BSI) 德国 (DIN) 欧盟 (EN)	钢种	碳 ≤	硅 ≤	锰 ≤	磷 ≤	硫 ≤	铬	钼	镍	力学性能			
		C	Si	Mn	P	S	Cr	Mo	Ni	屈服强度 σ _{0.2} (Mpa) ≥	抗拉强度 σ _b (Mpa) ≥	延伸率 δ 5 %	硬度 HB ≤
	304	0.07	1.0	2.0	0.045	0.015	17.0-18.0	/	8.0-10	205	520	40	187
	304L	0.03	1.0	2.0	0.045	0.015	17.0-18.0	/	8.0-10	180	480	40	187
316	0.08	1.0	2.0	0.045	0.015	16.5-18.0	2.0-2.5	10-13	205	520	40	187	
316L	0.03	1.0	2.0	0.045	0.015	16.5-18.0	2.0-2.5	10-13	180	480	40	187	