

专业生产真空阀门/真空元件制造商
MANUFACTURER OF VACUUM VALVES/VACUUM COMPONENTS



EFUN
一方·真空



EFUN

SHANGHAI EFUN VALVE CO., LTD
上海一方阀门有限公司

地址：上海市崇明区绿华经济开发区
Address: Luhua Economic Development Zone,
Chongming District, Shanghai
电话/Tel: 021-63730882 13381669929
E-mail: chisin@efvalve.com



上海一方阀门有限公司
SHANGHAI EFUN VALVE CO.,LTD.

ABOUT US»

Located in Shanghai, China. We are a professional manufacturer of Vacuum Valves & Vacuum components.

More than 80% of our products(8 million dollars each year)for exporting to European, North American, like Germany,American, Korea and so on...

Choose 'EFUN' and we grow!



Choose "EFUN" and We grow!

EFUN

Solution

Vacuum

EFUN leading the new future for vacuum

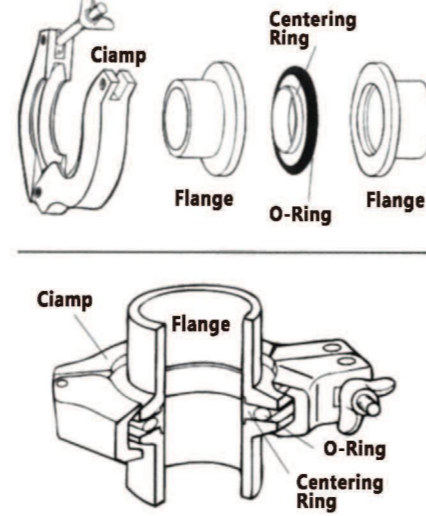


CONTENT

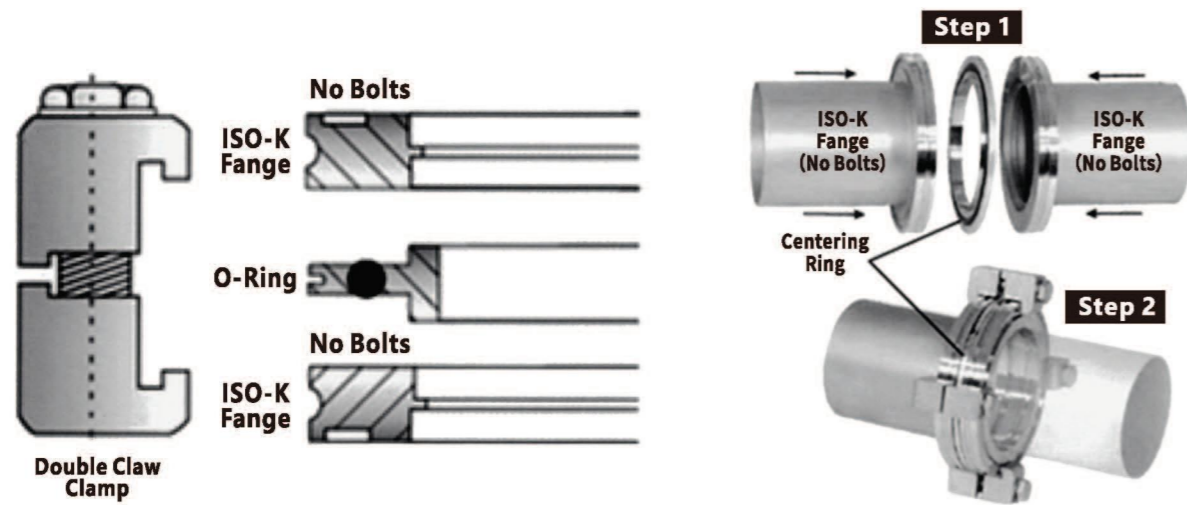
How to connect ISO KF (NW) Flange



Joining ISO-KF Flanges



How to connect ISO-K to ISO-K



How to connect CF flange



真空卡箍系列
CLAMP SERIES

Page. 01-07



支架系列
CENTERING RING

Page. 08-17



ISO 法兰系列
ISO-SERIES

Page. 18-26



CF 法兰系列
CF-SERIES

Page. 27-39



波纹管系列
VACUUM BELLOWS

Page. 40-44



管件系列
FITTINGS SERIES

Page. 45-53



转换法兰系列
ADAPTOR SERIES

Page. 54-66



阀门系列
VALVE SERIES

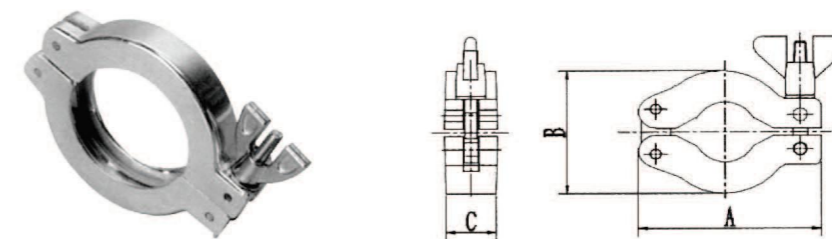
Page. 67-82

CLAMP SERIES

EFUN

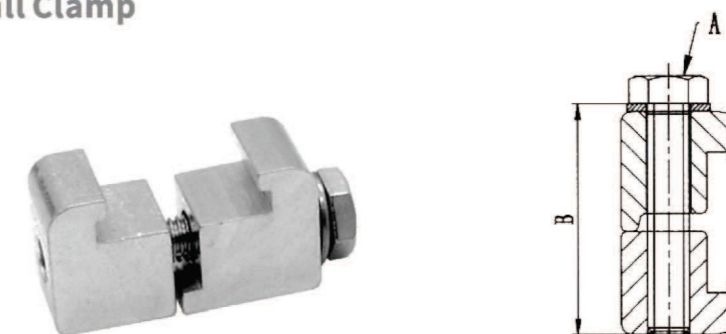


KF 真空卡箍 KF Wing Nut Clamp



Model No.	Material	A	B	C
KF10C	Aluminum	63	42.5	16
KF16C		63	42.5	16
KF25C		72	54	16
KF40C		90	70	16
KF50C		114	90	20
KF10C	304	63	42.5	16
KF16C		63	42.5	16
KF25C		72	54	16
KF40C		90	70	16
KF50C		114	90	20

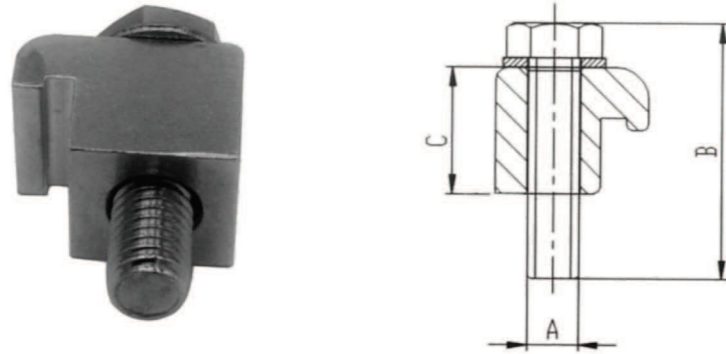
ISO 双边卡钳 ISO Double Wall Clamp



Material: Aluminum, 304

Model No.	A	B	Use Quantity	Fit Flange
ISO63-100DWCA	M8	45	4	ISO63/ISO80/ISO100
ISO160-250DWCA	M10	45	6	ISO160/ISO200/ISO250
ISO320-500DWCA	M12	60	8/8/12	ISO320/ISO400/ISO500

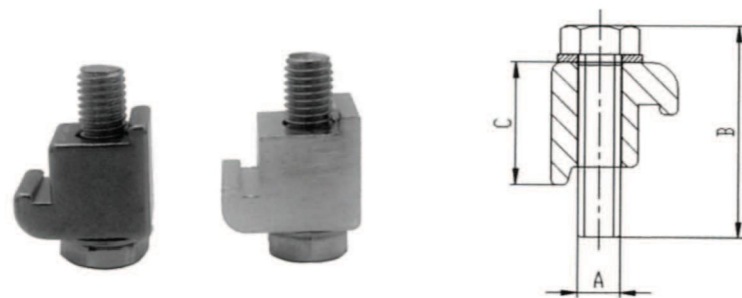
ISO 单边螺栓 ISO Single Bolt Clamp



Material: Steel+Zn Plated, Chrome, SS304, 316L

Model No.	A	B	C	Fit Flange
ISO63-100SWC	M8	35	23	ISO63/ISO80/ISO100
ISO160-250SWC	M10	35	23	ISO160/ISO200/ISO250
ISO320-500DSWC	M12	50	30	ISO320/ISO400/ISO500

ISO 单边卡钳 ISO Single Wall Clamp



Material: Aluminum, SS304

Model No.	A	B	C	Fit Flange
ISO63-100WCA	M8	35	23.5	ISO63/ISO80/ISO100
ISO160-250WCA	M10	35	23.5	ISO160/ISO200/ISO250
ISO320-500DWCA	M12	50	30	ISO320/ISO400/ISO500

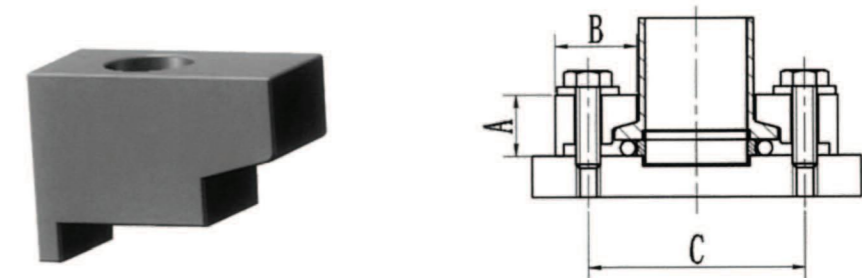
ISO 勾头螺栓 Double Claw Clamp



Material: Steel+Zn Plated, Chrome, SS304

Model No.	A	B	Use Quantity	Fit Flange
ISO63-250DCC	M10	61.5	4/4/4/4/6/6	ISO63/ISO80/ISO100 ISO160/ISO200/ISO250
ISO320-500DCC	M12	76	8/8/12	ISO320/ISO400/ISO500
ISO630DCC	M12	86	12	ISO630

KF 单边铝卡扣 KF Nail Clamp

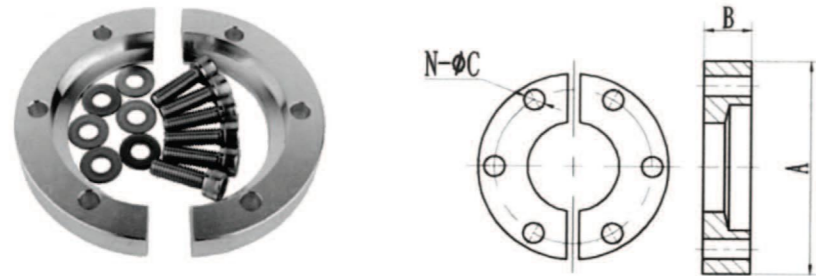


Material: Aluminum

Model No.	A	B	C	Use Quantity
KF10CA	15	20	43	3
KF16CA	15	20	43	3
KF25CA	15	20	53	4
KF40CA	15	20	68	4
KF50CA	15	20	88	6

KF 舱壁管夹

KF Vacuum Bulkead Clamp

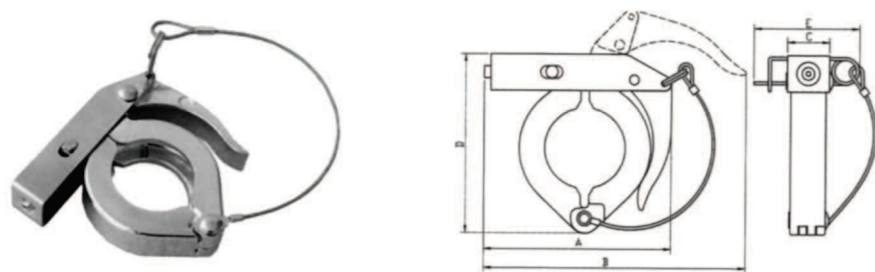


Material: Aluminum

Model No.	A	B	C	N
KF10BCA	50.8	9.2	4.3	6
KF16BCA	50.8	9.2	5.3	6
KF25BCA	60.3	9.9	5.3	6
KF40BCA	74.6	9.3	5.3	6
KF50BCA	95.2	10.3	5.3	8

KF 带绳卡箍

KF Toggle Clamp

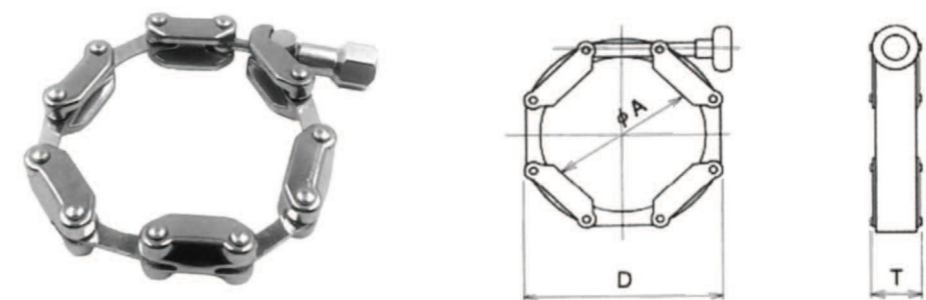


Material: Aluminum

Model No.	A	B	C	D	E
KF16TCA	69	97	20	63	43
KF25TCA	75	106	20	74	43
KF40TCA	85	123	20	90	43
KF50TCA	118	165	23	115	43

KF 链式卡箍小

KF Small Chain Clamp

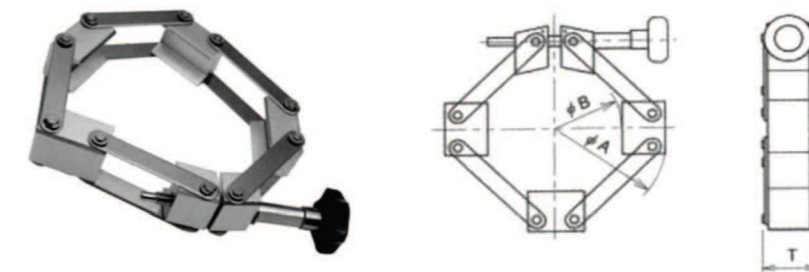


Material: SS 304

Model No.	A	D	T
KF10CC	22	60	20
KF16CC	22	60	20
KF25CC	32	70	20
KF40CC	47	85	20
KF50CC	67	105	20
KF63CC	79	120	20

KF 链式卡箍大

KF Large Chain Clamp

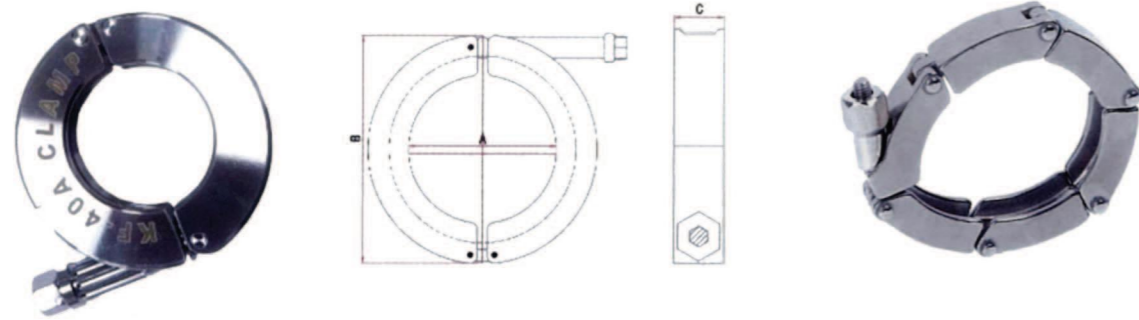


Material: Aluminum

Model No.	A	B	C
KF80CC	165	100	37
KF100CC	185	122	37
KF125CC	210	150	37
KF160CC	235	174	37
KF200CC	300	239	37
KF250CC	350	288	37

KF 精车卡箍

KF CNC Machined Clamp



Material: SS304, SS316L

Model No.	A	B	C
KF16CNC	22.3	63.3	17.3
KF25CNC	32.3	63.3	17.3
KF40CNC	46.5	83.5	17.3
KF50CNC	67.6	104.3	17.3

KF 压板卡箍

KF Rapid Fastening Clamp



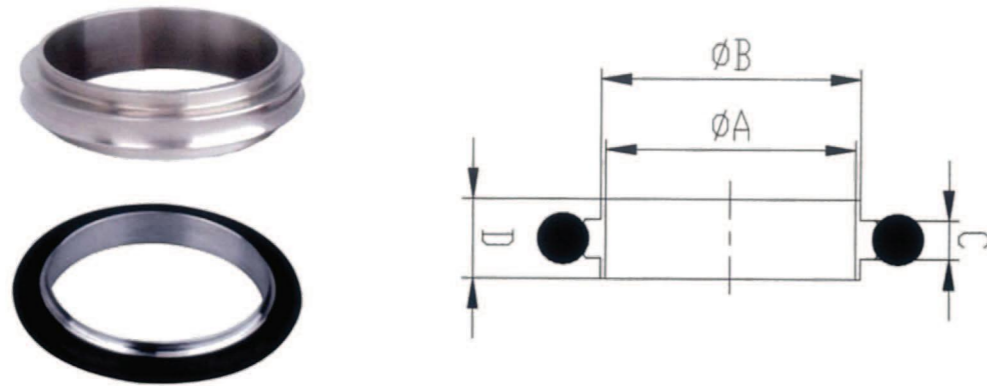
Material: Aluminum

Model No.	Wall Thickness	A	B
KF10/16	16	62	39
KF25	16	70	51
KF40	16	89	67
KF50	20	110	89



KF 中心支架+密封圈

KF Center Ring + O Ring



Model No.	Material C/R	Material O-Ring	A	B	C	D
KF10CRVA	AL/SS304	Viton/NBR	10	12	3.9	8
KF16CRVA	AL/SS304	Viton/NBR	16	17	3.9	8
KF25CRVA	AL/SS304	Viton/NBR	25	26	3.9	8
KF40CRVA	AL/SS304	Viton/NBR	40	41	3.9	8
KF50CRVA	AL/SS304	Viton/NBR	50	52	3.9	8

KF 内外支架

KF Center Ring Assembly with Aluminum Spacer



Model No.	Material O/R	Material O-Ring	Material C/R	A	B	C
KF10OCRVS	AL	Viton	SS304/SS316	32.5	10	8
KF16OCRVS	AL	Viton	SS304/SS316	32.5	16	8
KF25OCRVS	AL	Viton	SS304/SS316	42.5	25	8
KF40OCRVS	AL	Viton	SS304/SS316	57.5	40	8
KF50OCRVS	AL	Viton	SS304/SS316	77.5	50	8

KF 中心支架+密封圈+外支架

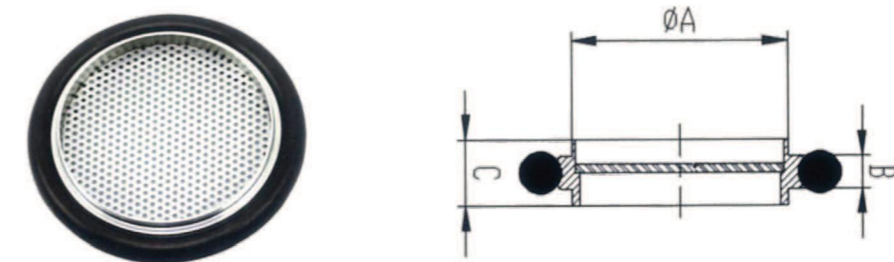
KF Center Ring + O Ring + Outer Ring



Model No.	Material C/R	Material O-Ring	Material O/R	A	B	C	D
KF10CRVA	AL/SS304	Viton/NBR	SS304/SS316	30	12.2	3.9	M8
KF16CRVA	AL/SS304	Viton/NBR	SS304/SS316	30	17.2	3.9	M10
KF25CRVA	AL/SS304	Viton/NBR	SS304/SS316	41.5	26.2	3.9	M12
KF40CRVA	AL/SS304	Viton/NBR	SS304/SS316	56	41.2	3.9	M10
KF50CRVA	AL/SS304	Viton/NBR	SS304/SS316	75	52.2	3.9	M12

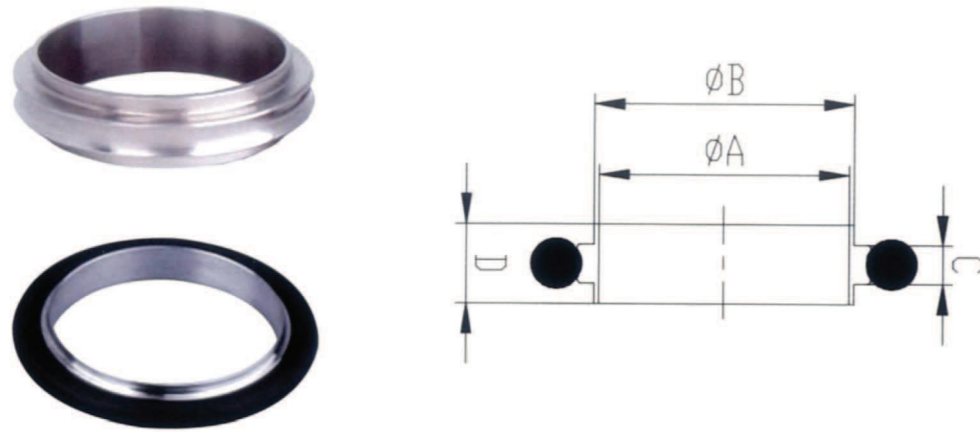
KF 带网中心支架+密封圈

KF Center Ring with Mesh + O ring



Model No.	Material C/R	Material O-Ring	A	B	C
KF10CRVA	AL/SS304	Viton	12	3.9	8
KF16CRVA	AL/SS304	Viton	17	3.9	8
KF25CRVA	AL/SS304	Viton	26	3.9	8
KF40CRVA	AL/SS304	Viton	41	3.9	8
KF50CRVA	AL/SS304	Viton	52	3.9	8

ISO 支架+密封圈
ISO Center Ring + O Ring



EURO

Model No.	Material C/R	Material O-Ring	A	B	C	D
ISO63CRVAE	AL/SS304/316L	Viton/NBR	67	70	3.9	8
ISO80CRVAE	AL/SS304/316L	Viton/NBR	80	83	3.9	8
ISO100CRVAE	AL/SS304/316L	Viton/NBR	99	102	3.9	8
ISO160CRVAE	AL/SS304/316L	Viton/NBR	150	153	3.9	8
ISO200CRVAE	AL/SS304/316L	Viton/NBR	210	213	3.9	8
ISO250CRVAE	AL/SS304/316L	Viton/NBR	257.5	261	3.9	8
ISO320CRVAE	AL/SS304/316L	Viton/NBR	312	318	5.6	12
ISO400CRVAE	AL/SS304/316L	Viton/NBR	394	400	5.6	12
ISO500CRVAE	AL/SS304/316L	Viton/NBR	494	501	5.6	12

USA

Model No.	Material C/R	Material O-Ring	A	B	C	D
ISO63CRVAA	AL/SS304/316L	Viton/NBR	67	69.6	3.9	8
ISO80CRVAA	AL/SS304/316L	Viton/NBR	80	82.6	3.9	8
ISO100CRVAA	AL/SS304/316L	Viton/NBR	99	101.6	3.9	8
ISO160CRVAA	AL/SS304/316L	Viton/NBR	150	152.6	3.9	8
ISO200CRVAA	AL/SS304/316L	Viton/NBR	210	212.6	3.9	8
ISO250CRVAA	AL/SS304/316L	Viton/NBR	257.5	260.6	3.9	8
ISO320CRVAA	AL/SS304/316L	Viton/NBR	312	317.3	5.6	12
ISO400CRVAA	AL/SS304/316L	Viton/NBR	394	399.2	5.6	12
	AL/SS304/316L	Viton/NBR	494	500.2	5.6	12

ISO 支架+密封圈+弹簧铝外圈
ISO Center Ring + Seal + AL Outer Ring



EURO

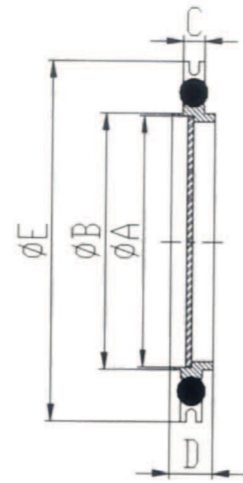
Model No.	Material C/R	Material O-Ring	A	B	C	D	E
ISO63CRVAE	AL/SS304/316L	Viton/NBR	67	70	3.9	8	94
ISO80CRVAE	AL/SS304/316L	Viton/NBR	80	83	3.9	8	109
ISO100CRVAE	AL/SS304/316L	Viton/NBR	99	102	3.9	8	128
ISO160CRVAE	AL/SS304/316L	Viton/NBR	150	153	3.9	8	179
ISO200CRVAE	AL/SS304/316L	Viton/NBR	210	213	3.9	8	238
ISO250CRVAE	AL/SS304/316L	Viton/NBR	257.5	261	3.9	8	287
ISO320CRVAE	AL/SS304/316L	Viton/NBR	312	318	5.6	12	344
ISO400CRVAE	AL/SS304/316L	Viton/NBR	394	400	5.6	12	446
ISO500CRVAE	AL/SS304/316L	Viton/NBR	494	501	5.6	12	535

USA

Model No.	Material C/R	Material O-Ring	A	B	C	D	E
ISO63CRVAA	AL/SS304/316L	Viton/NBR	67	69.6	3.9	8	94
ISO80CRVAA	AL/SS304/316L	Viton/NBR	80	82.6	3.9	8	109
ISO100CRVAA	AL/SS304/316L	Viton/NBR	99	101.6	3.9	8	128
ISO160CRVAA	AL/SS304/316L	Viton/NBR	150	152.6	3.9	8	179
ISO200CRVAA	AL/SS304/316L	Viton/NBR	210	212.6	3.9	8	238
ISO250CRVAA	AL/SS304/316L	Viton/NBR	257.5	260.6	3.9	8	287
ISO320CRVAA	AL/SS304/316L	Viton/NBR	312	317.3	5.6	12	344
ISO400CRVAA	AL/SS304/316L	Viton/NBR	394	399.2	5.6	12	446
ISO500CRVAA	AL/SS304/316L	Viton/NBR	494	500.2	5.6	12	535

ISO 带网支架+密封圈+弹簧铝外圈

ISO Center Ring with mesh + Seal + AL Outer Ring



EURO

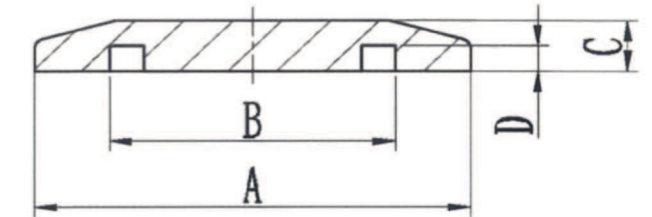
Model No.	Material C/R	Material O-Ring	A	B	C	D	E
ISO63CRVAE	AL/SS304/316L	Viton/NBR	67	70	3.9	8	94
ISO80CRVAE	AL/SS304/316L	Viton/NBR	80	83	3.9	8	109
ISO100CRVAE	AL/SS304/316L	Viton/NBR	99	102	3.9	8	128
ISO160CRVAE	AL/SS304/316L	Viton/NBR	150	153	3.9	8	179
ISO200CRVAE	AL/SS304/316L	Viton/NBR	210	213	3.9	8	238
ISO250CRVAE	AL/SS304/316L	Viton/NBR	257.5	261	3.9	8	287
ISO320CRVAE	AL/SS304/316L	Viton/NBR	312	318	5.6	12	344
ISO400CRVAE	AL/SS304/316L	Viton/NBR	394	400	5.6	12	446
ISO500CRVAE	AL/SS304/316L	Viton/NBR	494	501	5.6	12	535

USA

Model No.	Material C/R	Material O-Ring	A	B	C	D	E
ISO63CRVAA	AL/SS304/316L	Viton/NBR	67	69.6	3.9	8	94
ISO80CRVAA	AL/SS304/316L	Viton/NBR	80	82.6	3.9	8	109
ISO100CRVAA	AL/SS304/316L	Viton/NBR	99	101.6	3.9	8	128
ISO160CRVAA	AL/SS304/316L	Viton/NBR	150	152.6	3.9	8	179
ISO200CRVAA	AL/SS304/316L	Viton/NBR	210	212.6	3.9	8	238
ISO250CRVAA	AL/SS304/316L	Viton/NBR	257.5	260.6	3.9	8	287
ISO320CRVAA	AL/SS304/316L	Viton/NBR	312	317.3	5.6	12	344
ISO400CRVAA	AL/SS304/316L	Viton/NBR	394	399.2	5.6	12	446
ISO500CRVAA	AL/SS304/316L	Viton/NBR	494	500.2	5.6	12	535

KF 真空盲板

KF Vacuum Blank Flange

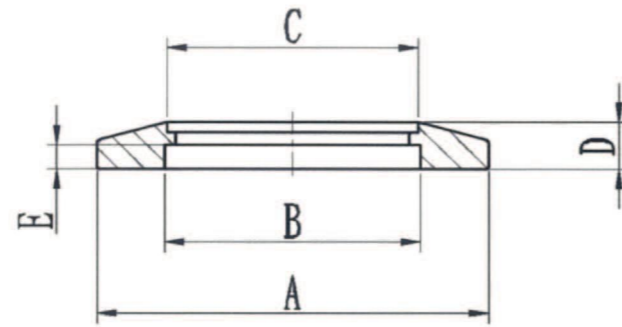


Material: SS304,304L,316L

Model No.	A	B	C	D
KF10BS	30	12.2	5	2.5
KF16BS	30	17.2	5	2.5
KF25BS	40	26.2	5	2.5
KF40BS	55	41.2	5	2.5
KF50BS	75	52.2	5	2.5
KF63BS	87	70	5	2.5
KF80BS	114	83	12	4.5
KF100BS	134	102	12	4.5
KF125BS	161	127	12	4.5
KF160BS	190	153	12	4.5
KF200BS	252	213	12	4.5

KF 真空焊接片

KF Vacuum Bored Flange

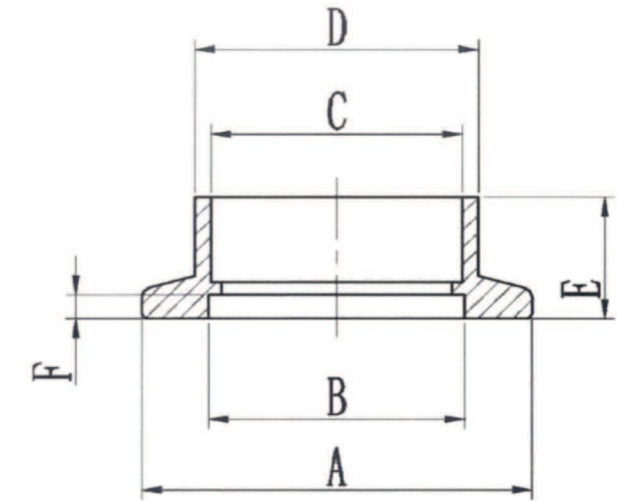


Material: SS304,304L,316L

Model No.	A	B	C	D	E
KF10B12	30	12.2	12.9	5	2.5
KF16B19	30	17.2	19.3	5	2.5
KF25B25	40	26.2	25.7	5	2.5
KF40B38	55	41.2	38.4	5	2.5
KF50B51	75	52.2	51	5	2.5
KF63B63	87	70	63.7	5	2.5
KF80B76	114	83	76.4	12	4.5
KF100B102	134	102	101.8	12	4.5
KF125B127	161	127	127.2	12	4.5
KF160B153	190	153	152.9	12	4.5
KF200B204	252	213	204.3	12	4.5

KF 真空套焊法兰

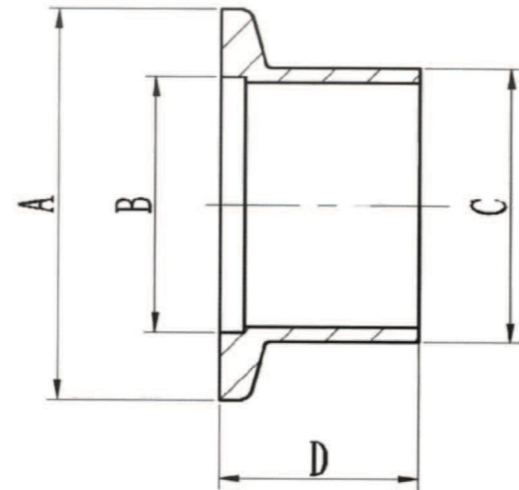
KF Vacuum Socket Weld Flange



Material: SS304,304L,316L

Model No.	A	B	C	D	E(Short)	E(Long)	F
KF10WSS	30	12.2	12.9	13	6.35	12.7	2.5
KF16WSS	30	17.2	19.3	19.3	6.35	12.7	2.5
KF25WSS	40	26.2	25.7	28	6.35	12.7	2.5
KF40WSS	55	41.2	38.4	45	6.35	12.7	2.5
KF50WSS	75	52.2	51	57	6.35	12.7	2.5
KF63WSS	87	70	63.7	67.5	6.35	12.7	2.5
KF80WSS	114	83	76.4	89	12.7	20	4.5
KF100WSS	134	102	101.8	108	12.7	20	4.5
KF125WSS	161	127	127.2	134	12.7	20	4.5
KF160WSS	190	153	152.9	165	12.7	20	4.5
KF200WSS	252	213	204.3	219	12.7	20	4.5

KF 真空接头
KF Half Nipple



Material: SS304,304L,316L
EURO

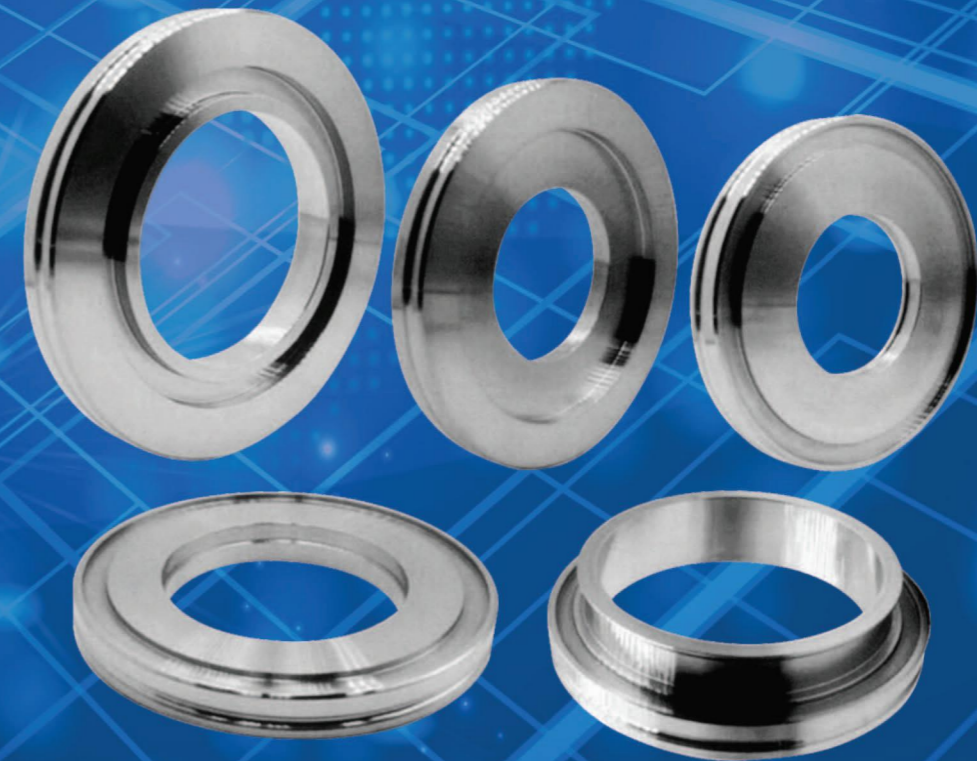
Model No.	A	B	C	D
KF10HNA	30	12.2	12.7	20/30/40/50/70
KF16HNA	30	17.2	19.05	20/30/40/50/70
KF25HNA	40	26.2	25.4	20/30/40/50/70
KF40HNA	55	41.2	38.1	20/30/40/50/70
KF50HNA	75	52.2	50.8	20/30/40/50/70

USA

Model No.	A	B	C	D
KF10HNE	30	12.2	14	20/30/40/50/70
KF16HNE	30	17.2	20	20/30/40/50/70
KF25HNE	40	26.2	28	20/30/40/50/70
KF40HNE	55	41.2	45	20/30/40/50/70
KF50HNE	75	52.2	57	20/30/40/50/70

JIS

Model No.	A	B	C	D
KF25HNJ	40	26.2	27.2	20/30/40/50/70
KF40HNJ	55	41.2	42.7	20/30/40/50/70
KF50HNJ	75	52.2	60.5	20/30/40/50/70



ISO法兰和配管可用于从大气压到高真空，经常装拆的各种应用中。一般管子的直径超过50mm（2英寸）。如果使用氟橡胶O形圈，可以承受150°C烘烤。

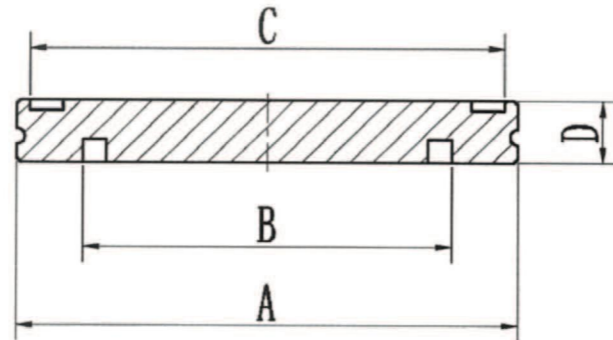
ISO法兰常用的两种形式是ISO-K和ISO-F、ISO-K和ISO-F真空接头是大尺寸的真空接头，公称直径尺寸包括：DN63,100,160,200,250,320,400,500和630制造标准包括：DIN28404，ISO1609可应用在要求空度高达10⁻⁸mbar的场所。

法兰密封Material通常为Viton、Buna、铝丝等；法兰通常为304、316不锈钢等。

ISO flanges and piping can be used in a wide range of applications, from atmospheric pressure to high vacuum, frequently assembled and disassembled. Generally, the diameter of the pipe is more than 50 mm(2 inches). If fluororubber O-ring is used, it can withstand 150°C baking.

The two common forms of ISO flange are iso-k and iso-f, iso-k and iso-f. the vacuum joint is a large-size vacuum joint. The nominal diameter dimensions include DN 63,100,160,200,250,320,400, 500 and 630. The manufacturing standards include DIN 28404 and ISO 1609, which can be applied to the situation where the true space is up to 10⁻⁸ mbar. Flange sealing material is usually Viton, Buna, aluminum, etc.; flange is usually 304,316 stainless steel, etc.

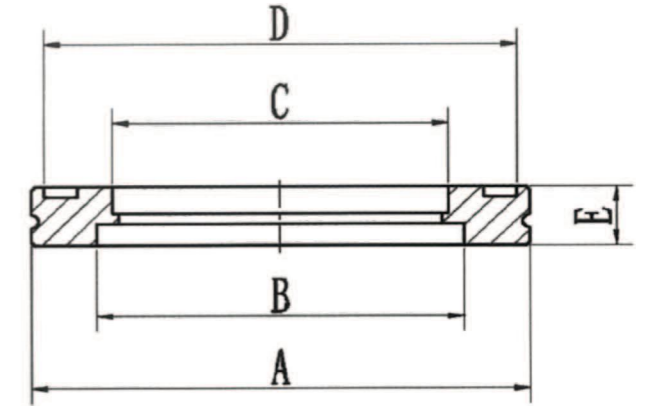
ISO 真空盲板
ISO Blank Flange



Material: SS304,304L,316L

Model No.	A	B	C	D
ISO63B	95	70	90	12
ISO80B	110	83	105	12
ISO100B	130	102	125	12
ISO125B	155	127	150	12
ISO160B	180	153	175	12
ISO200B	240	213	235	12
ISO250B	290	261	285	12
ISO320B	370	318	365	17
ISO400B	450	400	445	17
ISO500B	550	501	545	17
ISO630B	690	651	685	22

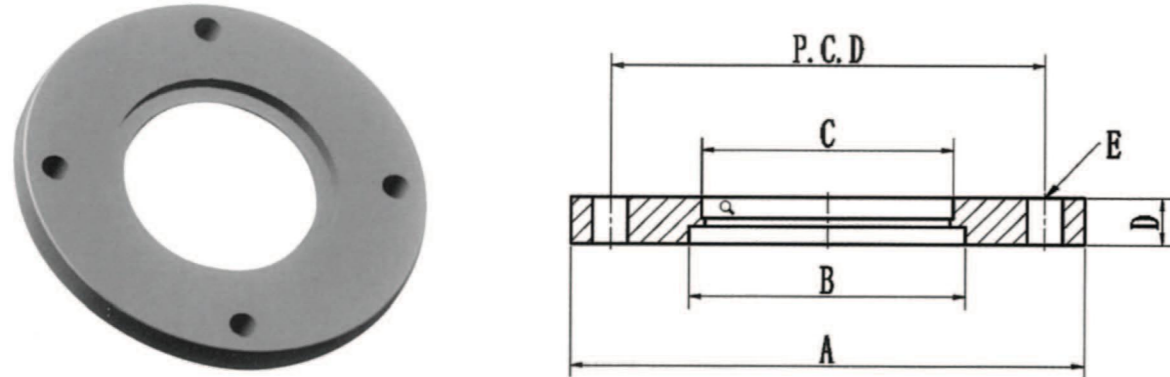
ISO 卡钳法兰
ISO Bored Flange



Material: SS304,304L,316L

Model No.	A	B	C	D	E
ISO63B63	95	70	64	90	12
ISO63B76	95	70	76.7	90	12
ISO80B76	110	83	76.7	105	12
ISO80B89	110	83	89.5	105	12
ISO100B102	130	102	102.5	125	12
ISO100B108	130	102	108.6	125	12
ISO100B114	130	102	114.6	125	12
ISO125B127	155	127	127.6	150	12
ISO125B133	155	127	133.6	150	12
ISO160B152	180	153	153	175	12
ISO160B159	180	153	159.6	175	12
ISO160B165	180	153	165.7	175	12
ISO200B204	240	213	204.7	235	12
ISO200B219	240	213	219.7	235	12
ISO250B254	290	261	254.8	285	12
ISO250B273	290	261	274	285	12
ISO320B305	370	318	306	365	17
ISO400B407	450	400	408	445	17
ISO500B508	550	501	509	545	17
ISO630B610	690	651	612	685	22

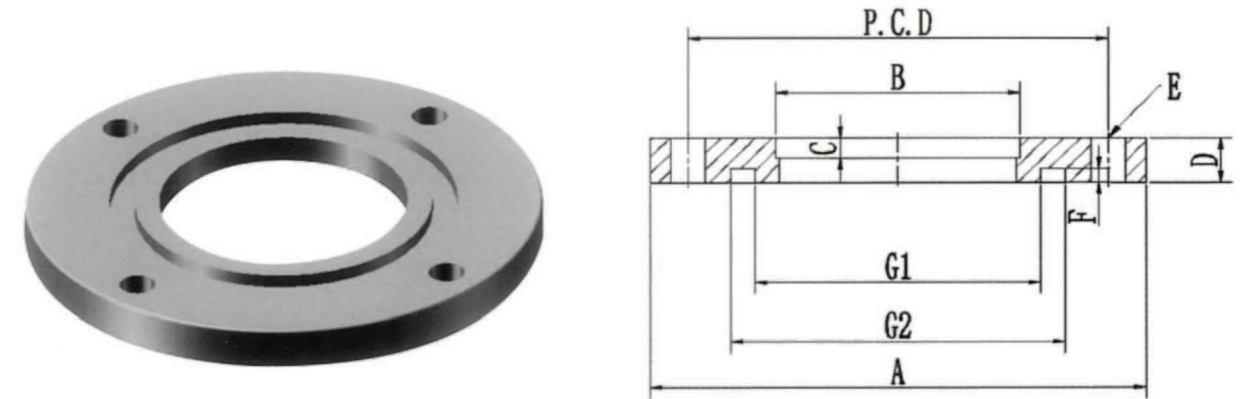
ISO-F 固定法兰
ISO Bolted Flange



Material: SS304,304L,316L

Model No.	A	B	C	D	E*NO	P.C.D
ISO63BF	130	70	63.7	12	9*4	110
ISO80BF	145	83	76.4	12	9*8	125
ISO100BF	165	102	101.8	12	9*8	145
ISO125BF	200	127	127.5	12	11*8	175
ISO160BF	225	153	152.9	16	11*8	200
ISO200BF	285	213	203.7	16	11*12	260
ISO250BF	335	261	254.5	16	11*12	310
ISO320BF	425	318	305.3	20	14*12	395
ISO400BF	510	400	406.9	20	14*16	480
ISO500BF	610	501	508.8	20	14*16	580
ISO630BF	750	651	610.5	24	14*20	720

ISO-F 带槽固定法兰
ISO Grooved Bolted Flange

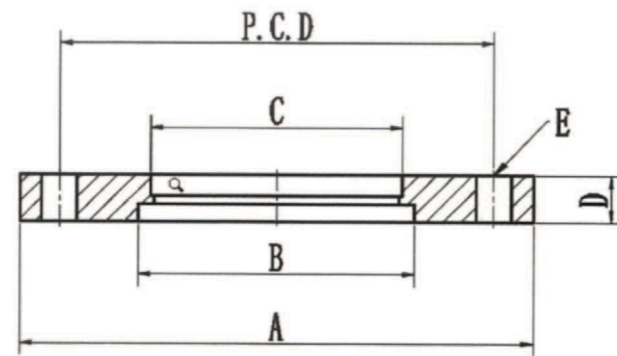


Material: SS304,304L,316L

Model No.	A	B	C	D	E*NO	P.C.D	G1	G2	F
ISO63BFG	130	63.7	5.5	12	9*4	110	75	87.6	3.7
ISO80BFG	145	76.4	5.5	12	9*8	125	88.5	101.1	3.7
ISO100BFG	165	101.8	5.5	12	9*8	145	107.5	120.1	3.7
ISO125BFG	200	127.5	5.5	12	11*8	175	139	151.6	3.7
ISO160BFG	225	152.9	8	16	11*8	200	160	172.6	3.7
ISO200BFG	285	203.7	8	16	11*12	260	224	236.6	3.7
ISO250BFG	335	254.5	8	16	11*12	310	266	278.6	3.7
ISO320BFG	425	305.3	8	20	14*12	395	345	361	4.9
ISO400BFG	510	406.9	8	20	14*16	480	420	436	4.9
ISO500BFG	610	508.8	8	20	14*16	580	520	536	4.9
ISO630BFG	750	610.5	10	24	14*20	720	670	686	4.9

ISO-F 螺孔固定法兰

ISO Bolted Flange - Tapped

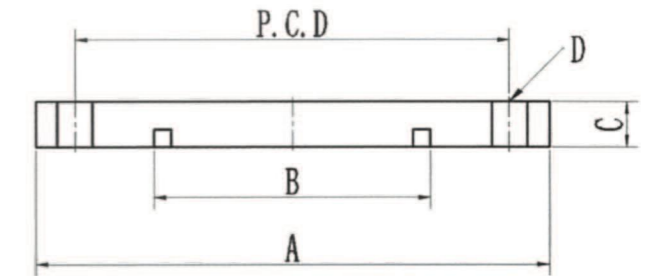
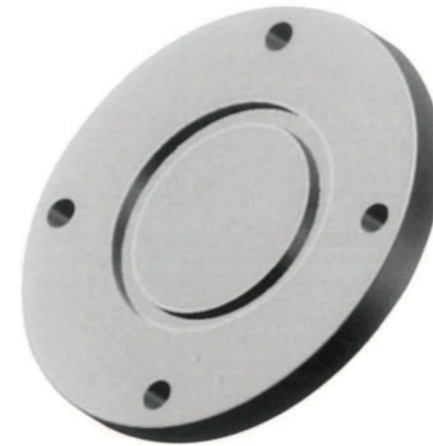


ISO Bolted Flange - Tapped

Model No.	A	B	C	D	E*NO	P.C.D
ISO63BFT	130	70	63.7	12	M8*4	110
ISO80BFT	145	83	76.4	12	M8*8	125
ISO100BFT	165	102	101.8	12	M8*8	145
ISO125BFT	200	127	127.5	12	M10*8	175
ISO160BFT	225	153	152.9	16	M10*8	200
ISO200BFT	285	213	203.7	16	M10*12	260
ISO250BFT	335	261	254.5	16	M10*12	310
ISO320BFT	425	318	305.3	20	M12*12	395
ISO400BFT	510	400	406.9	20	M12*16	480
ISO500BFT	610	501	508.8	20	M12*16	580
ISO630BFT	750	651	610.5	24	M12*20	720

ISO-F 固定盲板法兰

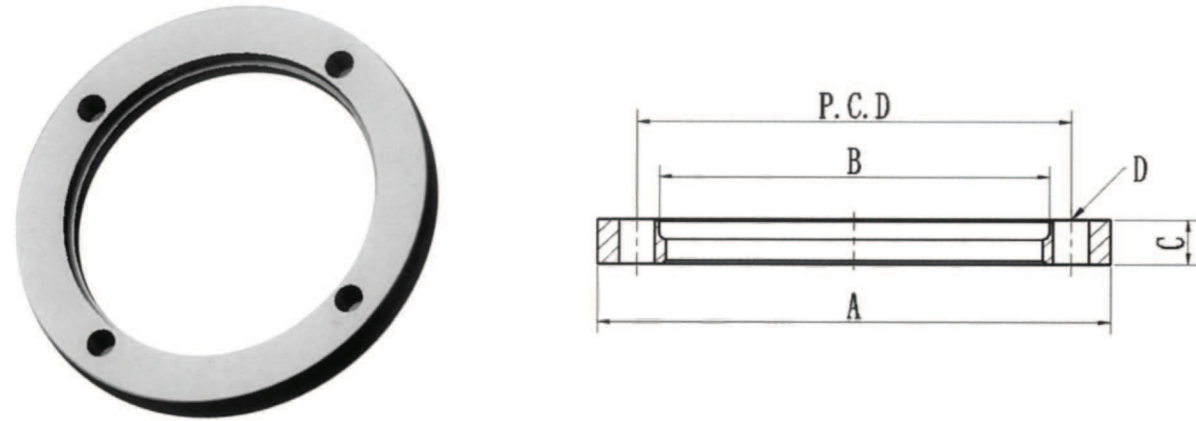
ISO Bolted Blank



Material: SS304,304L,316L

Model No.	A	B	C	D*NO	P.C.D
ISO63BFB	130	70	12	9*4	110
ISO80BFB	145	83	12	9*8	125
ISO100BFB	165	102	12	9*8	145
ISO125BFB	200	127	12	11*8	175
ISO160BFB	225	153	16	11*8	200
ISO200BFB	285	213	16	11*12	260
ISO250BFB	335	261	16	11*12	310
ISO320BFB	425	318	20	14*12	395
ISO400BFB	510	400	20	14*16	480
ISO500BFB	610	501	20	14*16	580
ISO630BFB	750	651	24	14*20	720

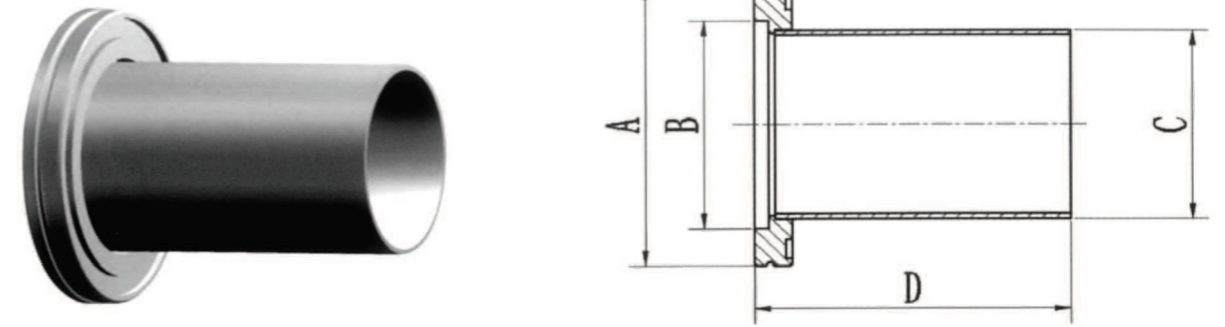
ISO 松套法兰
ISO Rotatable Bolt Ring



Material: SS304,304L,316L

Model No.	A	B	C	D*NO	P.C.D
ISO63RBR	130	98.5	12	9*4	110
ISO80RBR	145	113.5	12	9*8	125
ISO100RBR	165	133.5	12	9*8	145
ISO125RBR	200	160.7	12	11*8	175
ISO160RBR	225	185.7	16	11*8	200
ISO200RBR	285	245.7	16	11*12	260
ISO250RBR	335	295.7	16	11*12	310
ISO320RBR	425	375.8	20	14*12	395
ISO400RBR	510	458.8	20	14*16	480
ISO500RBR	610	558.8	20	14*16	580
ISO630RBR	750	651	24	14*20	720

ISO 接管法兰
ISO Half Nipple



Material: SS304,304L,316L

Model No.	A	B	C	D
ISO63B63	95	70	63.5	100
ISO80B76	110	83	76.2	100
ISO100B102	130	102	101.6	100
ISO125B127	155	127	127	100
ISO160B152	180	153	152.4	100
ISO200B204	240	213	203.2	100
ISO250B255	290	261	254	100
ISO320B305	370	318	304.8	100
ISO400B407	450	400	406.8	100
ISO500B508	550	501	508	100
ISO630B610	690	651	609.6	100

CF-SERIES

EFUN

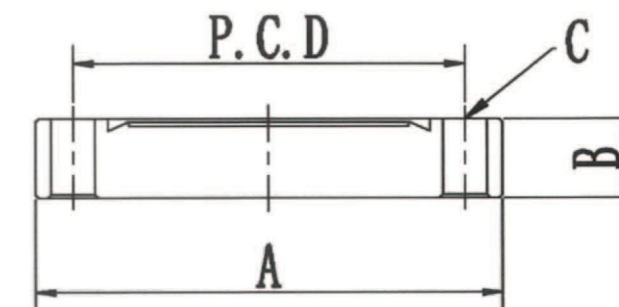


CF法兰分为固定型和松套型两种。固定型法兰为一体化结构。松套型法兰由挤压铜垫圈的刀口部分和通过螺栓的固定部分构成。法兰上可开通孔或螺纹孔。开有通孔的法兰要通过螺栓和螺母固定;开有螺纹孔的法兰可直接使用螺栓固定。法兰的材质主要为SUS304(或SUS304L),因为SUS304放出气体少,加工和焊接比较容易。

CF flanges are divided into fixed and loose type. The fixed flange is an integrated structure. The loose sleeve flange is composed of a blade portion of an extruded copper washer and a fixed portion through bolts. Holes or threaded holes can be opened on the flange. The flange with through holes should be fixed with bolts and nuts; The flange with threaded holes can be directly fixed with bolts. The material of the flange is mainly SUS304 (or SUS304L), as SUS304 emits less gas and is easier to process and weld.

CF 盲板法兰

CF Blank Flange (Nonrotatable)

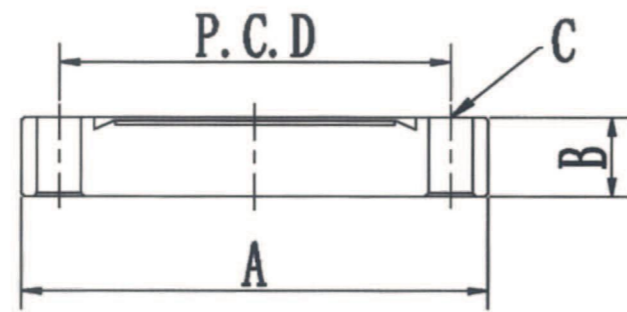


Material: 304、304L、316L、316LN

Model No.	A	B	C*No	P.C.D
CF16B	34	7.3	4.4*6	27
CF25B	54	10.5	6.6*6	43
CF35B	70	13	6.6*6	58.7
CF50B	86	16	8.4*8	72.4
CF63B	114	17.5	8.4*8	92.2
CF80B	130	18	8.4*16	110
CF100B	152	20	8.4*16	130.3
CF160B	202	22	8.4*20	181
CF200B	253	24.5	8.4*24	231.8
CF250B	305	26	8.4*32	284

CF 螺孔盲板法兰

CF Nonrotatable - Tapped Flange with Bolt Holes

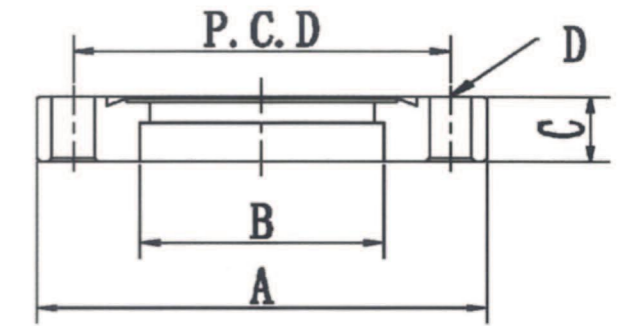


Material: 304, 304L, 316L, 316LN

Model No.	A	B	C*No	P.C.D
CF16BT	34	7.3	M4*6	27
CF25BT	54	10.5	M6*6	43
CF35BT	70	13	M6*6	58.7
CF50BT	86	16	M8*8	72.4
CF63BT	114	17.5	M8*8	92.2
CF80BT	130	18	M8*16	110
CF100BT	152	20	M8*16	130.3
CF160BT	202	22	M8*20	181
CF200BT	253	24.5	M8*24	231.8
CF250BT	305	26	M8*32	284

CF 内焊法兰

CF Bored Flange

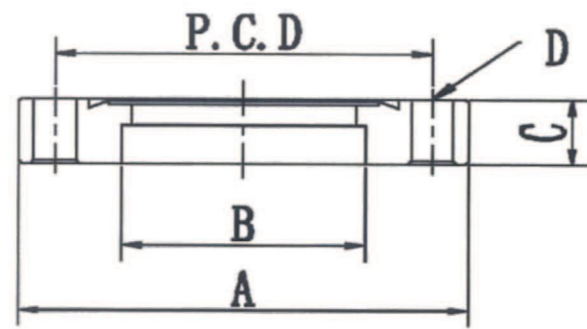


Material: 304, 304L, 316L, 316LN

Model No.	A	B	C	D*No	P.C.D
CF16B19	34	19.2	7.3	4.4*6	27
CF25B25	54	25.6	10.5	6.6*6	43
CF25B28	54	28.2	10.5	6.6*6	43
CF35B25	70	25.6	13	6.6*6	58.7
CF35B38	70	38.3	13	6.6*6	58.7
CF35B45	70	45.2	13	6.6*6	58.7
CF50B51	86	51.1	16	8.4*8	72.4
CF63B63	114	63.7	17.5	8.4*8	92.2
CF80B76	130	76.2	18	8.4*16	110
CF100B102	152	101.8	20	8.4*16	130.3
CF160B153	202	153	22	8.4*20	181
CF200B204	253	204.5	24.5	8.4*24	231.8
CF250B254	305	254.6	26	8.4*32	284

CF 螺孔内焊法兰

CF Nonrotatable - Tapped Bored Flange with Bolt Holes

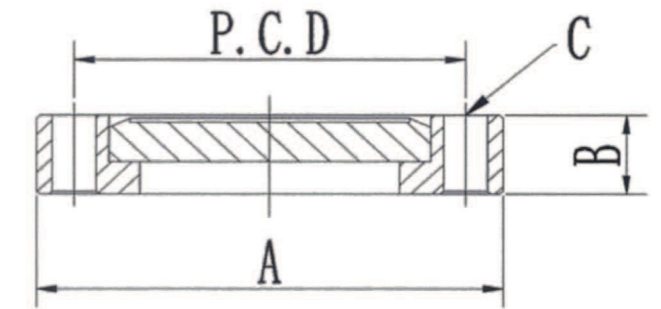


Material: 304, 304L, 316L, 316LN

Model No.	A	B	C	D*No	P.C.D
CF16B19T	34	19.2	7.3	M4*6	27
CF25B25T	54	25.6	10.5	M6*6	43
CF25B28T	54	28.2	10.5	M6*6	43
CF35B25T	70	25.6	13	M6*6	58.7
CF35B38T	70	38.3	13	M6*6	58.7
CF35B45T	70	45.2	13	M6*6	58.7
CF50B51T	86	51.1	16	M8*8	72.4
CF63B63T	114	63.7	17.5	M8*8	92.2
CF80B76T	130	76.2	18	M8*16	110
CF100B102T	152	101.8	20	M8*16	130.3
CF160B153T	202	153	22	M8*20	181
CF200B204T	253	204.5	24.5	M8*24	231.8
CF250B254T	305	254.6	26	M8*32	284

CF 松套盲板法兰

CF Blank Flange (Rotatable)

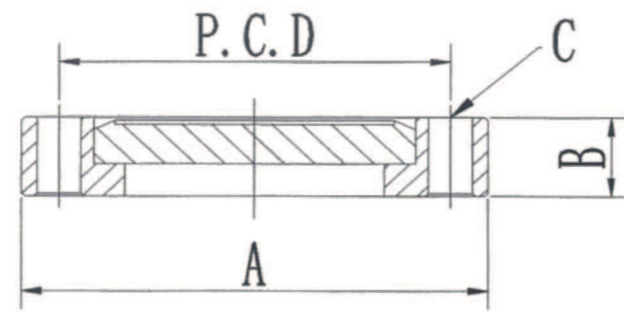
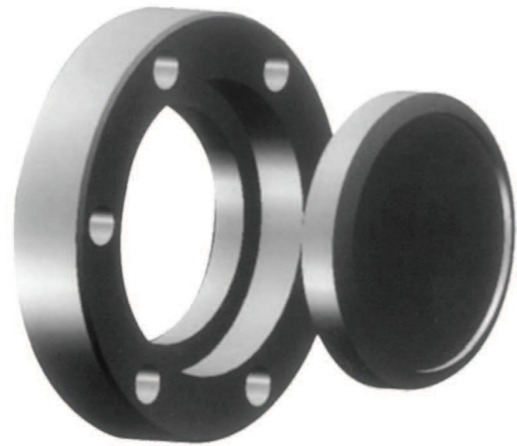


Material: 304, 304L, 316L, 316LN

Model No.	A	B	C*No	P.C.D
CF16B	34	7.3	4.4*6	27
CF25B	54	10.5	6.6*6	43
CF35B	70	13	6.6*6	58.7
CF50B	86	16	8.4*8	72.4
CF63B	114	17.5	8.4*8	92.2
CF80B	130	18	8.4*16	110
CF100B	152	20	8.4*16	130.3
CF160B	202	22	8.4*20	181
CF200B	253	24.5	8.4*24	231.8
CF250B	305	26	8.4*32	284

CF 螺孔松套盲板法兰

CF Rotatable - Tapped Bolted Flange

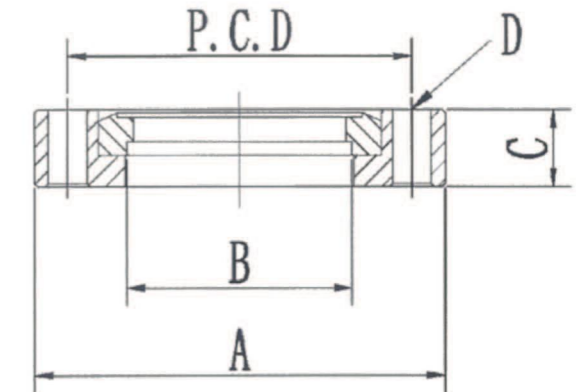


Material: 304, 304L, 316L, 316LN

Model No.	A	B	C*No	P.C.D
CF16BT	34	7.3	M4*6	27
CF25BT	54	10.5	M6*6	43
CF35BT	70	13	M6*6	58.7
CF50BT	86	16	M8*8	72.4
CF63BT	114	17.5	M8*8	92.2
CF80BT	130	18	M8*16	110
CF100BT	152	20	M8*16	130.3
CF160BT	202	22	M8*20	181
CF200BT	253	24.5	M8*24	231.8
CF250BT	305	26	M8*32	284

CF 松套法兰

CF Rotatable Bored Blank - Neck

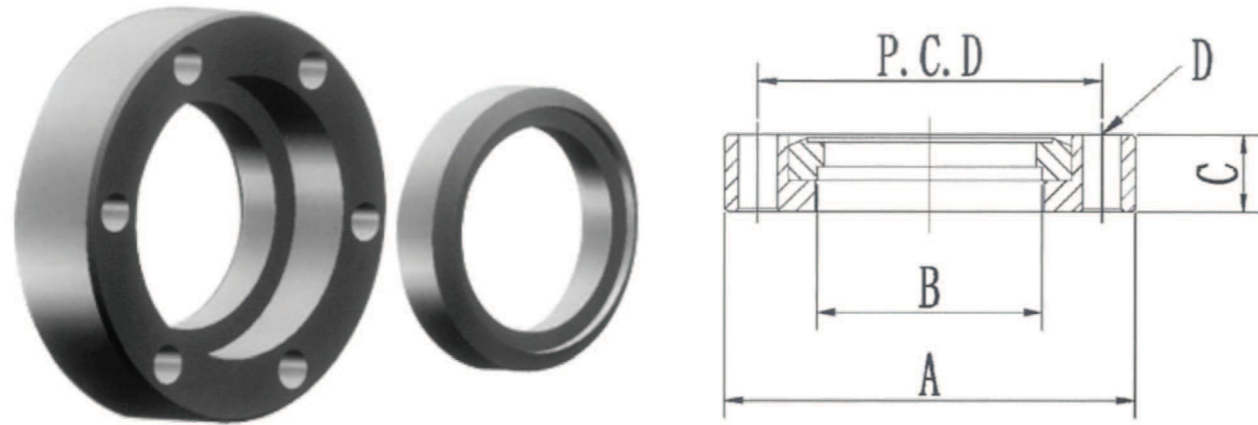


Material: 304, 304L, 316L, 316LN

Model No.	A	B	C	D*No	P.C.D
CF16B19	34	19.2	7.3	4.4*6	27
CF25B25	54	25.6	10.5	6.6*6	43
CF25B28	54	28.2	10.5	6.6*6	43
CF35B25	70	25.6	13	6.6*6	58.7
CF35B38	70	38.3	13	6.6*6	58.7
CF35B45	70	45.2	13	6.6*6	58.7
CF50B51	86	51.1	16	8.4*8	72.4
CF63B63	114	63.7	17.5	8.4*8	92.2
CF80B76	130	76.2	18	8.4*16	110
CF100B102	152	101.8	20	8.4*16	130.3
CF160B153	202	153	22	8.4*20	181
CF200B204	253	204.5	24.5	8.4*24	231.8
CF250B254	305	254.6	26	8.4*32	284

CF 松套螺孔法兰

CF Rotatable - Tapped Bolted Bored Flange – Neck

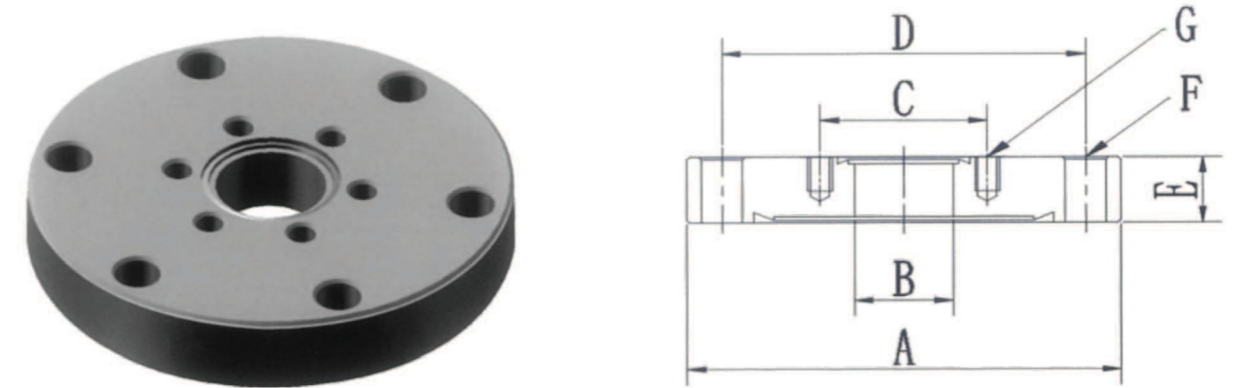


Material: 304, 304L, 316L, 316LN

Model No.	A	B	C	D*No	P.C.D
CF16B19T	34	19.2	7.3	M4*6	27
CF25B25T	54	25.6	10.5	M6*6	43
CF25B28T	54	28.2	10.5	M6*6	43
CF35B25T	70	25.6	13	M6*6	58.7
CF35B38T	70	38.3	13	M6*6	58.7
CF35B45T	70	45.2	13	M6*6	58.7
CF50B51T	86	51.1	16	M8*8	72.4
CF63B63T	114	63.7	17.5	M8*8	92.2
CF80B76T	130	76.2	18	M8*16	110
CF100B102T	152	101.8	20	M8*16	130.3
CF160B153T	202	153	22	M8*20	181
CF200B204T	253	204.5	24.5	M8*24	231.8
CF250B254T	305	254.6	26	M8*32	284

CF 变径法兰

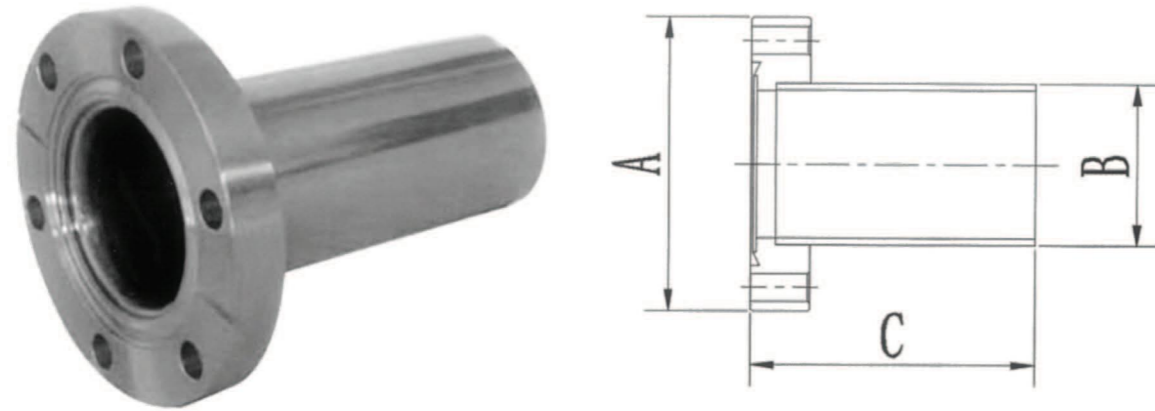
CF Reducing Flange



Material: 304, 304L, 316L, 316LN

Model No.	A	B	C	D	E	F*No	G*No
CF25RF16	54	16	27	43	10.5	6.6*6	M4*6
CF35RF16	70	16	27	58.7	13	6.6*6	M6*6
CF35RF25	70	25	43	58.7	13	6.6*6	M6*6
CF50RF16	86	16	27	86	16	8.4*8	M6*6
CF50RF25	86	25	43	86	16	8.4*8	M6*6
CF50RF35	86	35	58.7	86	16	8.4*8	M6*6
CF63RF35	114	35	58.7	92.2	17.5	8.4*8	M6*6
CF100RF35	152	35	58.7	130.3	20	8.4*16	M6*6
CF100RF63	152	63	92.2	130.3	20	8.4*16	M8*8
CF160RF35	202	35	58.7	181	22	8.4*20	M6*6
CF160RF63	202	63	92.2	181	22	8.4*20	M8*8
CF160RF100	202	100	130.3	181	22	8.4*20	M8*1
CF200RF35	253	35	58.7	231.8	24.5	8.4*24	M6*6
CF200RF63	253	63	92.2	231.8	24.5	8.4*24	M8*8
CF200RF100	253	100	130.3	231.8	24.5	8.4*24	M8*1
CF200RF160	253	160	181	231.8	24.5	8.4*24	M8*2
CF250RF135	305	35	58.7	284	26	8.4*32	M6*6
CF250RF63	305	63	92.2	284	26	8.4*32	M8*8
CF250RF100	305	100	130.3	284	26	8.4*32	M8*1
CF250RF160	305	160	181	284	26	8.4*32	M8*2
CF250RF200	305	200	231.8	284	26	8.4*32	M8*2

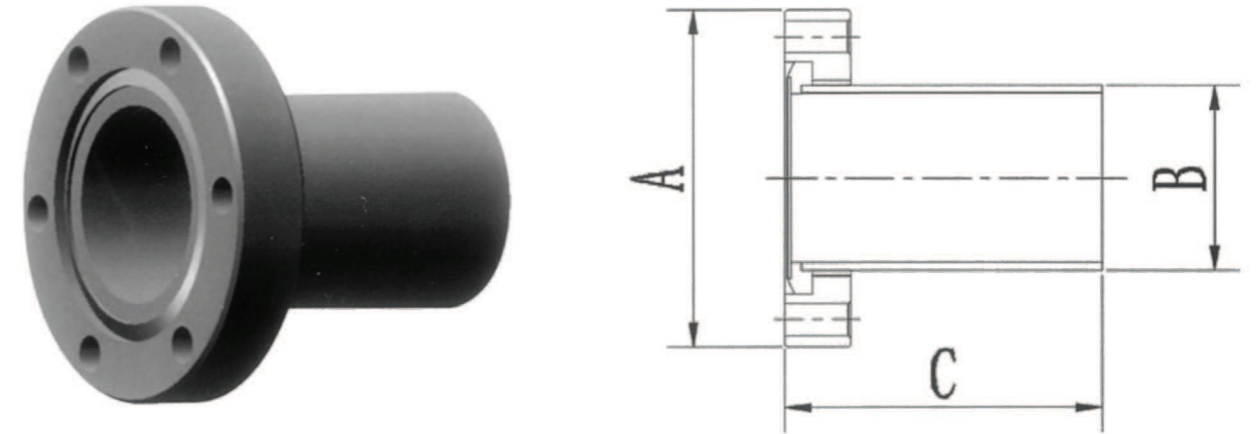
CF 接管
CF Half Nipple



Material: 304, 304L, 316L, 316LN

Model No.	A	B	C
CF16HN	34	19.05	38
CF25HN	54	25.4	52
CF35HN	70	38.1	63
CF50HN	86	50.8	82
CF63HN	114	63.5	85
CF80HN	130	76.2	90
CF100HN	152	101.6	110
CF160HN	202	152.4	150
CF200HN	253	204	200
CF250HN	305	254	250

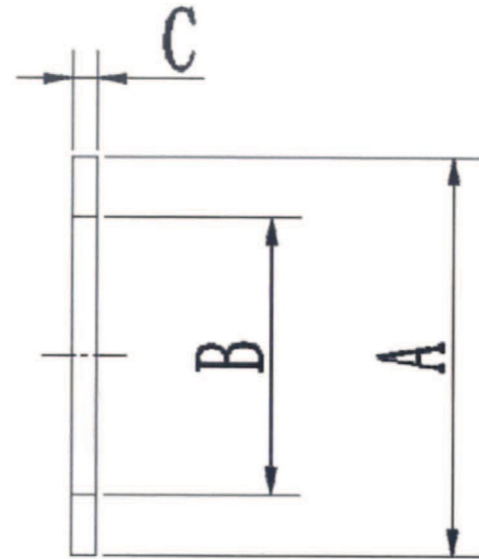
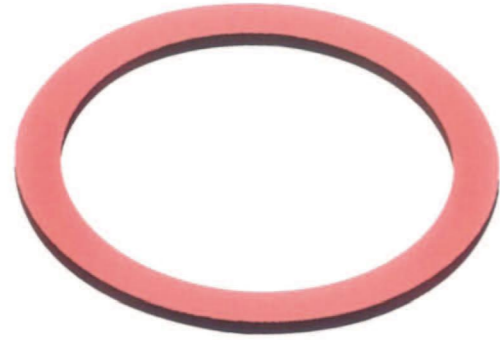
CF 松套接管
CF Half Nipple (rotatable)



Material: 304, 304L, 316L, 316LN

Model No.	A	B	C
CF16HN	34	19.05	38
CF25HN	54	25.4	52
CF35HN	70	38.1	63
CF50HN	86	50.8	82
CF63HN	114	63.5	85
CF80HN	130	76.2	90
CF100HN	152	101.6	110
CF160HN	202	152.4	150
CF200HN	253	204	200
CF250HN	305	254	250

CF 无氧铜垫片
CF Copper Gasket



Material: TU1
Wall thickness can be 2.2mm,
Silver plated is available

Model No.	A	B	C
CF16CG	21.3	16.3	2
CF25CG	35	25.6	2
CF35CG	48.2	39	2
CF50CG	61.6	52	2
CF63CG	82.4	63.8	2
CF80CG	99	76.3	2
CF100CG	120.5	102	2
CF160CG	171.3	152.8	2
CF200CG	222.1	203.6	2
CF250CG	272.7	254	2



- 进口不锈钢原材料304/316T1/Inconel627/哈氏合金等。
- 全自动激光焊接自动成型，板料厚度0.1~0.4mm。
- 波纹管采用单层或多层鼓波成型，层数1~3ply。
- 接头型式多样，如NW，ISO法兰、卡盘法兰等。

应用:

阀门密封: 以波纹管作为密封件，广泛用于化工工业或真空系统等高温或高危险性流体，以及对密封性有严格要求的供应管路上。

管路连接: 具有位移补偿、密封、连接面振动，提供用于排气管路的真空管道，以实现真空制程；同时提供耐腐蚀材质波纹管作为化学管道的连接。

·设备连接: 利用超薄多层波纹管的柔软度佳、寿命长且耐高压，应用在高频振动或高压流体传送的设备上使用。

·仪表元件: 利用真空或压力控制电极棒的移动作为开关元件，或波纹管受温度、压力的位移变化作为感测元件应用领域: 半导体、液晶芯片、生物制药、化工、航空航天等。

FEATURES:

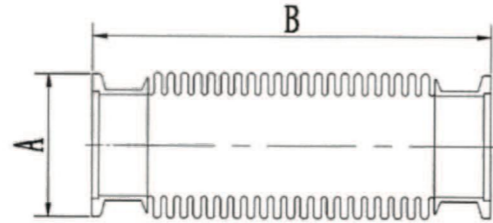
- Rigid raw material SS304/SS316 Ti/C276.etc
- TIG Welding, 0.1~0.4mm wall thickness.
- 1-3 layers, Drum wave forming.
- Connections: ISO, NW, KF, CF flanges.

APPLICATIONS:

- Valve sealing: Bellows are used as sealing parts, widely used in chemical industry or vacuum system, hightemp or high-risk fluids, as well as the pipelines that request strict sealing.
 - Pipeline connection: with displacement compensation, sealing, and connecting surface vibration, using as connection accessories for exhaust pipelines in vacuum system.
 - With corrosion preventive characteristic, are used in chemistry industry
 - Equipment connection: Bellows are soft of ultra-thin, multi-layer ripples, long life and high pressure resistance. So they can be used on the equipment of high-frequency vibration or high-pressure fluid transmission.
 - Instrument components: Use vacuum or pressure to control the movement of the electrode stick as a switch element
- Application fields: semiconductor, LCD chip, biopharmaceutical, chemical, aerospace, etc.

KF 真空波纹管

KF Vacuum Bellow

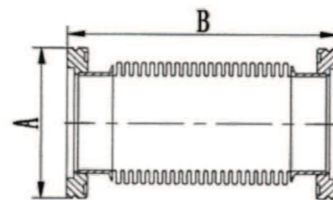


Material: SS304, SS316L, SS316Ti, C276

Model No.	Wall Thickness	A	B
KF16FX	0.12mm	30	Length 100mm – 10M
KF25FX	0.12mm	40	
KF40FX	0.12mm	55	
KF50FX	0.12mm	75	

ISO 真空波纹管

ISO Vacuum Bellow

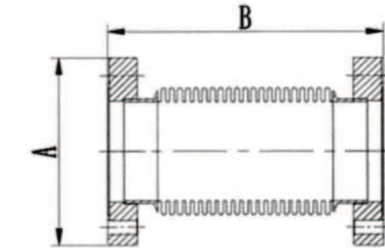


Material: SS304, SS316L, SS316Ti, C276

Model No.	Wall Thickness	A	B
ISO63FX	0.17mm	95	Length 100mm – 10M
ISO80FX	0.17mm	110	
ISO100FX	0.20mm	130	
ISO160FX	0.24mm	180	
ISO200FX	0.25mm	240	
ISO250FX	0.25mm	290	

CF 真空波纹管

CF Vacuum Bellow

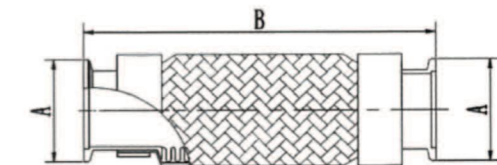


Material: SS304, SS316L, SS316Ti, C276

Model No.	Wall Thickness	A	B
CF16FX	0.12mm	34	Length 100mm – 10M
CF25FX	0.12mm	54	
CF35FX	0.12mm	70	
CF50FX	0.12mm	86	
CF63FX	0.17mm	114	
CFC80FX	0.17mm	130	
CF100FX	0.20mm	152	
CF160FX	0.24mm	202	
CF200FX	0.25mm	253	
CF250FX	0.25mm	305	

KF 带编织网波纹管

KF Braided Bellows

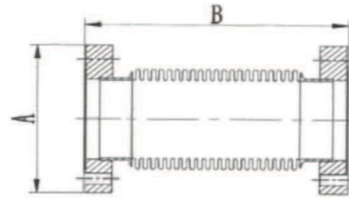


Material: SS304, SS316L

Model No.	A	B
KF16FXB	30	Length 100mm – 10M
KF25FXB	40	
KF40FXB	55	
KF50FXB	75	

ISO 带孔法兰波纹管

Vacuum Bellows with ISO Flange (with holes)

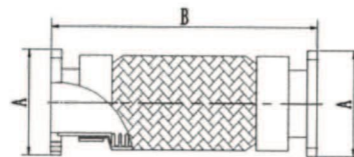


Material: SS304, SS316L, SS316Ti, C276

Model No.	A	B
ISO16FX	60	Length 100mm – 10M
ISO25FX	70	
ISO40FX	100	
ISO50FX	110	
ISO63FX	130	
ISO80FX	145	
ISO100FX	165	
ISO160FX	225	
ISO200FX	285	

ISO 带孔法兰带编织网波纹管

Vacuum Braided Bellows with ISO Flange (with holes)

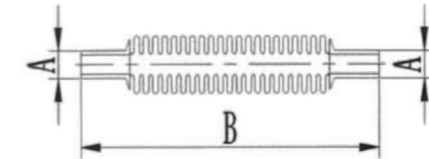


Vacuum Braided Bellows with ISO Flange (with holes)

Model No.	A	B
ISOFFX16	60	Length 100mm – 10M
ISOFFX25	70	
ISOFFX40	100	
ISOFFX50	110	
ISOFFX63	130	
ISOFFX80	145	
ISOFFX100	165	
ISOFFX160	225	
ISOFFX200	285	
ISOFFX250	335	
ISOFFX320	425	

卡套及VCR波纹管

Compression and VCR Bellows

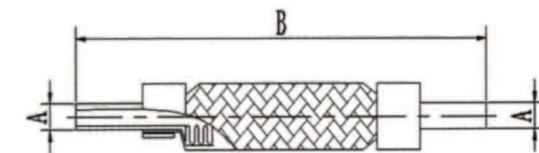


Material: SS304, SS316L

Model No.	A	B
KT4FX	4	Length 100mm – 10M
KT6FX	6	
KT8FX	8	Compression or VCR connection can be optional
KT10FX	10	
KT12FX	12	
KT03FX	3.18	
KT06FX	6.35	
KT09FX	9.53	
KT12FX	12.7	

卡套及VCR带编织网波纹管

Compression and VCR Braided Bellows



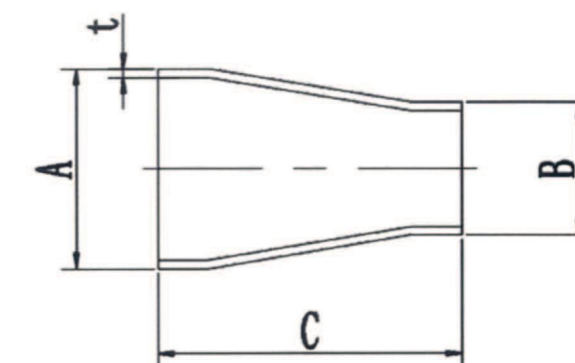
Material: SS304, SS316L

Model No.	A	B
KT3FX	3	Length 100mm – 10M
KT4FX	4	
KT6FX	6	Compression or VCR connection can be optional
KT8FX	8	
KT10FX	10	
KT12FX	12	
KT03FX	3.18	
KT06FX	6.35	
KT09FX	9.53	
KT12FX	12.7	

FITTINGS SERIES

EFUN

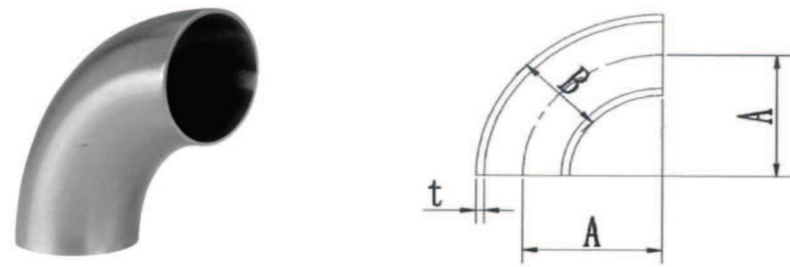
大小头 Buttweld Conical Reducer



Material: SS304, SS316L Surface: Satin, Sand Blasted, Milled, CNC machined

Model No.	A	B	C	t
25-16CR	25.4	19.05	60.3	1.65
40-16CR	38.1	19.05	60.3	1.65
40-25CR	38.1	25.4	60.3	1.65
50-25CR	50.8	25.4	60.3	1.65
50-40CR	50.8	38.1	60.3	1.65
63-40CR	63.5	38.1	60.3	1.65
63-50CR	63.5	50.8	60.3	1.65
80-50CR	76.2	50.8	92	1.65
80-63CR	76.2	63.5	92	1.65
100-50CR	101.6	50.8	92	2.11
100-63CR	101.6	63.5	92	2.11
100-80CR	101.6	76.2	92	2.11
150-80CR	152.4	76.2	152	2.8
150-100CR	152.4	101.6	152	2.8

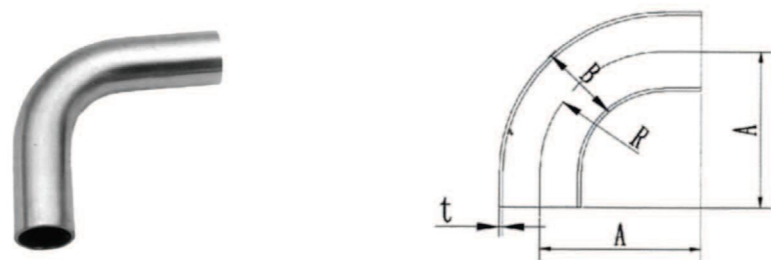
90°弯头
90° Elbow



Material: SS304、SS316L Surface: Satin、Sand Blasted、Milled

Model No.	A	B	t
16EL90A	28.6	19.05	1.65
25EL90A	38.1	25.4	1.65
40EL90A	57.2	38.1	1.65
50EL90A	76.2	50.8	1.65
63EL90A	95.2	63.5	1.65
80EL90A	114.3	76.2	1.65
100EL90A	152.4	101.6	2.11
150EL90A	228.6	152.4	2.80

加长90°弯头
90° Elbow with Tangent



Material: SS304、SS316L Surface: Satin、Sand Blasted、Milled

Model No.	A	B	R	t
16EL90A	34.5	19.05	28.6	1.65
25EL90A	52.4	25.4	38.1	1.65
40EL90A	74.6	38.1	57.2	1.65
50EL90A	103.2	50.8	76.2	1.65
63EL90A	131.8	63.5	95.2	1.65
80EL90A	160.3	76.2	114.3	1.65
100EL90A	211.1	101.6	152.4	2.11

45°弯头
45° Elbow



Material: SS304、SS316L Surface: Satin、Sand Blasted、Milled

Model No.	A	B	t
16EL45A	10.8	19.05	1.65
25EL45A	15.9	25.4	1.65
40EL45A	23.8	38.1	1.65
50EL45A	31.8	50.8	1.65
63EL45A	39.7	63.5	1.65
80EL45A	47.6	76.2	1.65
100EL45A	63.5	101.6	2.11

加长45°弯头
45° Elbow with Tangent

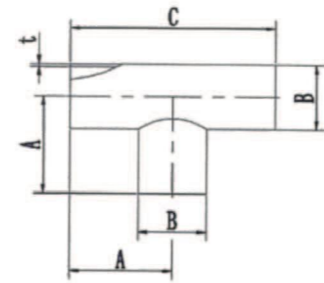
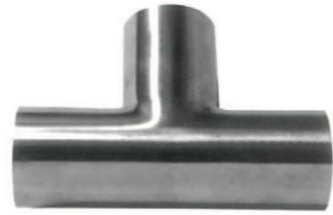


Material: SS304、SS316L Surface: Satin、Sand Blasted、Milled

Model No.	A	B	t
16EL45A	19.3	19.05	1.65
25EL45A	30.2	25.4	1.65
40EL45A	41.3	38.1	1.65
50EL45A	58.7	50.8	1.65
63EL45A	76.2	63.5	1.65
80EL45A	93.7	76.2	1.65
100EL45A	122.2	101.6	2.11

三通管件

Tee

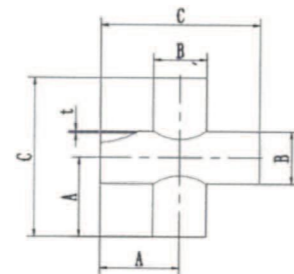


Material: SS304, SS316L Surface: Satin, Sand Blasted, Milled

Model No.	A	B	C	t
16TA	34.5	19.05	69	1.65
25TA	47.6	25.4	95.2	1.65
40TA	57.2	38.1	114.4	1.65
50TA	76.2	50.8	152.4	1.65
63TA	76.2	63.5	152.4	1.65
80TA	82.5	76.2	165.1	1.65
100TA	98.4	101.6	196.8	2.11
150TA	127	152.4	254	2.8

四通管件

Cross

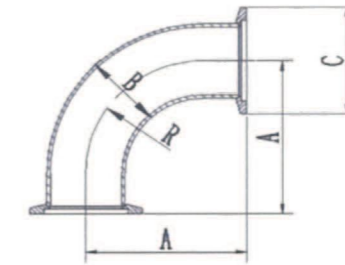


Material: SS304, SS316L Surface: Satin, Sand Blasted, Milled

Model No.	A	B	C	t
16XA	34.5	19.05	69	1.65
25XA	47.6	25.4	95.2	1.65
40XA	57.2	38.1	114.4	1.65
50XA	76.2	50.8	152.4	1.65
63XA	76.2	63.5	152.4	1.65
80XA	82.5	76.2	165.1	1.65
100XA	98.4	101.6	196.8	2.11
150XA	127	152.4	254	2.8

KF 90°弯头

KF 90°Elbow

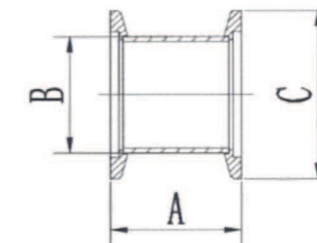


Material: SS304, SS316L Surface: Satin, Sand Blasted, Milled

Model No.	Std	A	B	C	R
KF16EL90A	USA	38.3	19.05	30	28.6
KF25EL90A	USA	56.2	25.4	40	38.1
KF40EL90A	USA	78.4	38.1	55	57.2
KF50EL90A	USA	107	50.8	75	76.2
KF16EL90E	EURO	40	19.05	30	28.6
KF25EL90E	EURO	50	25.4	40	38.1
KF40EL90E	EURO	65	38.1	55	57.2
KF50EL90E	EURO	70	50.8	75	76.2

KF 90°二通

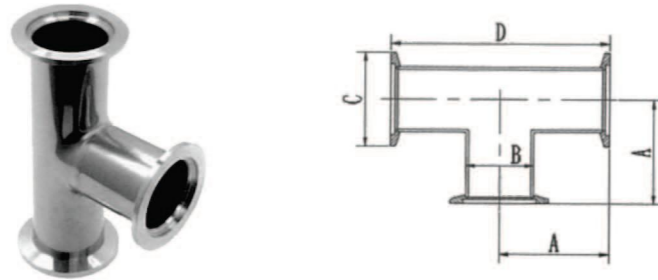
KF Full Nipple



Material: SS304, SS316L CNC machined

Model No.	Std	A	B	C
KF16	USA	43.6	19.05	30
KF25	USA	43.6	25.4	40
KF40	USA	43.6	38.1	55
KF50	USA	43.6	50.8	75
KF16NL	EURO	80	19.05	30
KF25NL	EURO	80	28	40
KF40NL	EURO	80	45	55
KF50NL	EURO	80	57	75

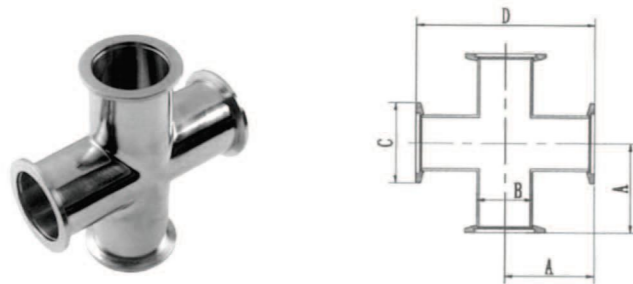
KF 三通
KF Tee



Material: SS304, SS316L Surface: Satin, Sand Blasted, Milled

Model No.	Std	A	B	C	D
KF16TA	USA	38.3	19.05	30	76.6
KF25TA	USA	51.4	25.4	40	102.8
KF40TA	USA	61	38.1	55	122
KF50TA	USA	80	50.8	75	160
<hr/>					
KF16TE	EURO	40	19.05	30	80
KF25TE	EURO	50	25.4	40	100
KF40TE	EURO	65	38.1	55	130
KF50TE	EURO	70	50.8	75	140

KF 四通
KF Cross



Material: SS304, SS316L Surface: Satin, Sand Blasted, Milled

Model No.	Std	A	B	C	D
KF16XA	USA	38.3	19.05	30	76.6
KF25XA	USA	51.4	25.4	40	102.8
KF40XA	USA	61	38.1	55	122
KF50XA	USA	80	50.8	75	160
<hr/>					
KF16XE	EURO	40	19.05	30	80
KF25XE	EURO	50	25.4	40	100
KF40XE	EURO	65	38.1	55	130
KF50XE	EURO	70	50.8	75	140

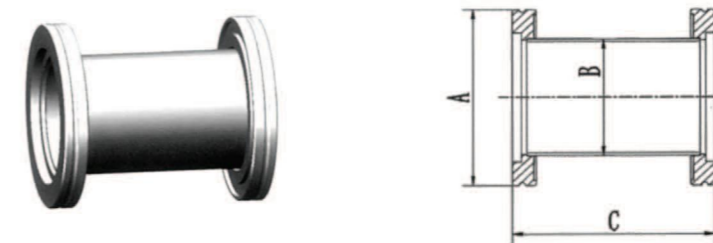
ISO 90°弯头
ISO 90° Elbow



Material: SS304, SS304L, SS316L Surface: Satin, Sand Blasted

Model No.	Std	A	B	C
ISO63EL90A	USA	138.4	63.5	95
ISO80EL90A	USA	166.9	76.2	110
ISO100EL90A	USA	217.7	101.6	130
ISO160EL90A	USA	235.2	152.4	180
<hr/>				
ISO63EL90E	EURO	88	63.5	95
ISO80EL90E	EURO	98	76.2	110
ISO100EL90E	EURO	108	101.6	130
ISO160EL90E	EURO	138	152.4	180

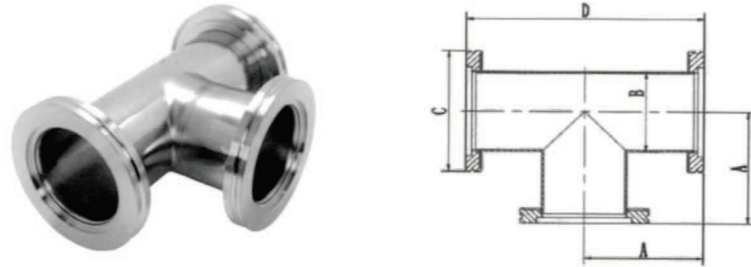
ISO 二通
ISO Two Way



Material: SS304, SS304L, SS316L Surface: Satin, Sand Blasted

Model No.	A	B	C
ISO63N	95	63.5	100
ISO80N	110	76.2	100
ISO100N	130	101.6	100
ISO160N	180	152.4	100
ISO200N	240	204	100
ISO250N	290	254	100
ISO320N	370	304.8	200
ISO400N	450	406.4	200
ISO500N	550	508	200

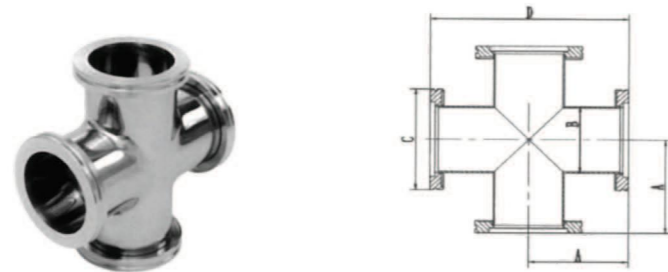
ISO 三通
ISO Tee



Material: SS304, SS304L, SS316L Surface: Satin, Sand Blasted

Model No.	Std	A	B	C	D
ISO63TA	USA	82.8	63.5	95	165.6
ISO80TA	USA	89.15	76.2	110	178.3
ISO100TA	USA	105	105	130	210
ISO160TA	USA	133.6	152.4	180	267.2
<hr/>					
ISO63TE	EURO	88	63.5	95	176
ISO80TE	EURO	98	76.2	110	196
ISO100TE	EURO	108	101.6	130	216
ISO160TE	EURO	138	152.4	180	276

ISO 四通
ISO Cross

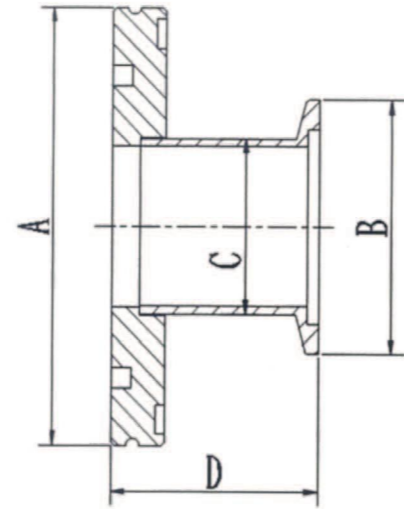


Material: SS304, SS304L, SS316L Surface: Satin, Sand Blasted

Model No.	Std	A	B	C	D
ISO63XA	USA	82.8	63.5	95	165.6
ISO80XA	USA	89.15	76.2	110	178.3
ISO100XA	USA	105	105	130	210
ISO160XA	USA	133.6	152.4	180	267.2
<hr/>					
ISO63XE	EURO	88	63.5	95	176
ISO80XE	EURO	98	76.2	110	196
ISO100XE	EURO	108	101.6	130	216
ISO160XE	EURO	138	152.4	180	276



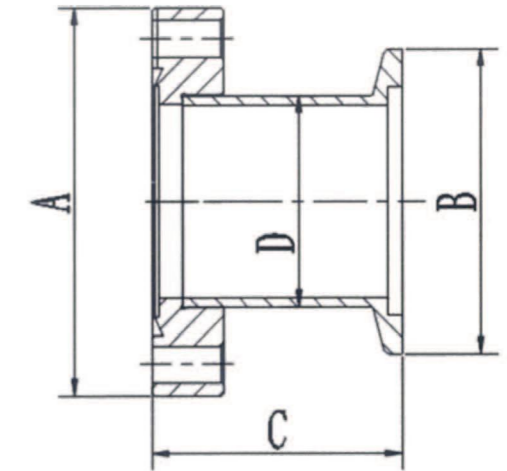
ISO-KF 转换接头
Tubulated Adaptor



Material: 304, 304L, 316L, 316LN

Model No.	A	B	C	D
ISO63KA16	95	30	19.05	46.5
ISO63KA25	95	40	25.4	46.5
ISO63KA40	95	55	38.1	46.5
ISO63KA50	95	75	50.8	46.5
ISO80KA16	110	30	19.05	46.5
ISO80KA25	110	40	25.4	46.5
ISO80KA40	110	55	38.1	46.5
ISO80KA50	110	75	50.8	46.5
ISO100KA16	130	30	19.05	46.5
ISO100KA25	130	40	25.4	46.5
ISO100KA40	130	55	38.1	46.5
ISO100KA50	130	75	50.8	46.5
ISO160KA16	180	30	19.05	46.5
ISO160KA25	180	40	25.4	46.5
ISO160KA40	180	55	38.1	46.5
ISO160KA50	180	75	50.8	46.5

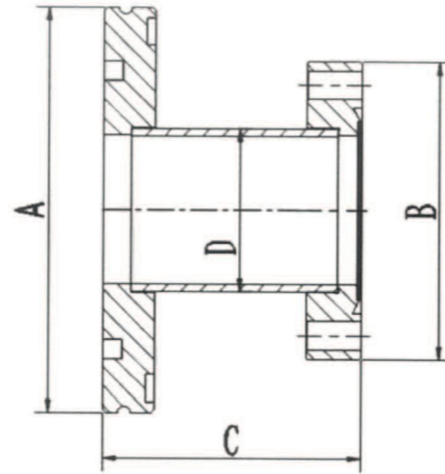
CF-KF 转换接头
Straight Adaptor



Material: Aluminum, 304, 304L, 316L

Model No.	A	B	C	D
CF16K10	34	30	43	12.7
CF16K16	34	30	43	19.09
CF25K10	54	30	45	12.7
CF25K16	54	30	45	19.09
CF25K25	54	40	45	25.4
CF35K10	70	30	45.5	12.7
CF35K16	70	30	45.5	19.05
CF35K25	70	40	45.5	25.4
CF35K40	70	55	45.5	38.1
CF50K16	86	30	48	19.05
CF50K25	86	40	48	25.4
CF50K40	86	55	48	38.1
CF50K50	86	75	48	50.8

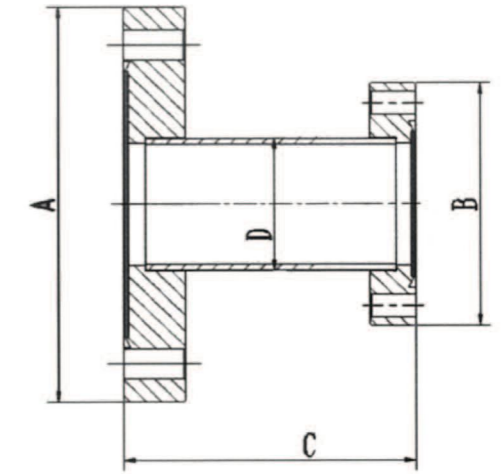
ISO-CF 转换接头
Tubulated Adaptor



Material: 304, 304L, 316L, 316LN

Model No.	A	B	C	D
ISO63C16A	95	34	90	19.05
ISO63C35A	95	70	90	38.1
ISO63C50A	95	86	90	50.8
ISO63C63A	95	114	90	63.5
ISO80C16A	110	34	90	19.05
ISO80C35A	110	70	90	38.1
ISO80C50A	110	86	90	50.8
ISO100C16A	130	34	90	19.05
ISO100C35A	130	70	90	38.1
ISO100C50A	130	86	90	50.8
ISO160C63A	180	114	90	63.5
ISO160C100A	180	152	90	101.6
ISO160C150A	180	202	90	152.4
CF100S63A	152	95	90	63.5
CF100S80A	152	110	90	76.2
CF100S100A	152	130	90	101.6
CF150S63A	202	95	90	63.5
CF150S100A	202	130	90	101.6

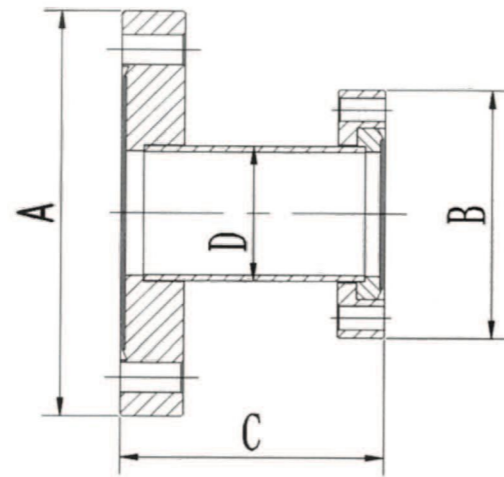
CF-锥形转换接头
CF Conical Reducing Adaptor



Material: 304, 304L, 316L, 316LN

Model No.	A	B	C	D
CF35RA16	70	34	76	19.05
CF35RA25	70	54	76	25.4
CF63RA16	114	34	76	19.05
CF63RA25	114	54	76	25.4
CF63RA35	114	70	76	38.1
CF100RA35	152	70	76	38.1
CF100RA63	152	114	76	63.5
CF150RA35	202	70	76	38.1
CF150RA63	202	114	76	63.5
CF150RA100	202	152	76	101.6

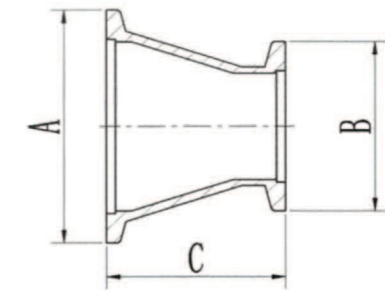
CF-CF 变径松套 CF Conical Reducer



Material: 304, 304L, 316L, 316LN

Model No.	A	B	C	D
CF35RA16	70	34	76	19.05
CF35RA25	70	54	76	25.4
CF63RA16	114	34	76	19.05
CF63RA25	114	54	76	25.4
CF63RA35	114	70	76	38.1
CF100RA35	152	70	76	38.1
CF100RA63	152	114	76	63.5
CF150RA35	202	70	76	38.1
CF150RA63	202	114	76	63.5
CF150RA100	202	152	76	101.6

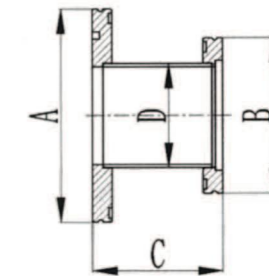
KF-KF 变径接头 KF Conical Reducer



Material: 304, 304L, 316L, 316LN

Model No.	A	B	C
KF25RA16	40	30	40
KF40RA16	55	30	40
KF40RA25	55	40	40
KF50RA16	75	30	40
KF50RA25	75	40	40
KF50RA40	75	55	40

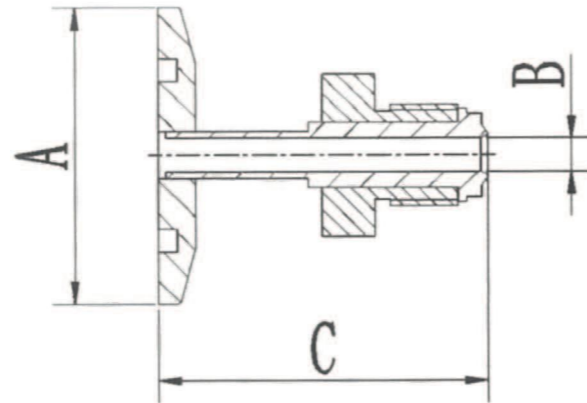
ISO 变径接头 ISO Tubulated Adaptor



Material: 304, 304L, 316L, 316LN

Model No.	A	B	C	D
ISO80RA63	110	95	63	63.5
ISO100RA63	130	96	63	63.5
ISO100RA80	130	110	63	76.2
ISO160RA63	180	95	63	63.5
ISO160RA80	180	110	63	76.2
ISO160RA100	180	130	63	101.6

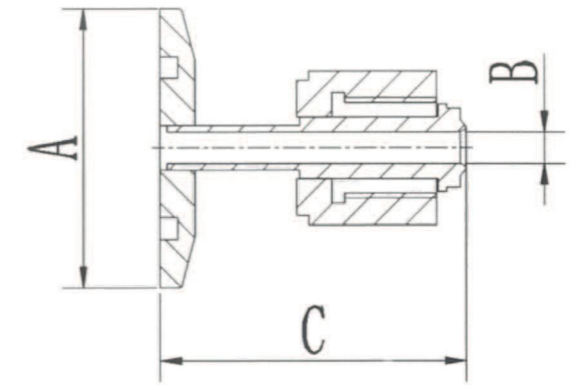
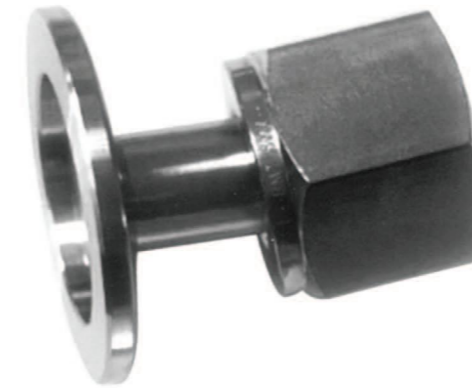
KF-VCR 公转换接头
KF VCR Male Adaptor



Material: 304, 304L, 316L, 316LN

Model No.	A	B	C	VCR
KF16MVCR6	30	4.4	44	1/4"
KF16MVCR13	30	10.4	44	1/2"
KF25MVCR6	40	4.4	44	1/4"
KF25MVCR13	40	10.4	44	1/2"
KF40MVCR6	55	4.4	44	1/4"
KF40MVCR13	55	10.4	44	1/2"
KF50MVCR6	75	4.4	44	1/4"
KF50MVCR13	75	10.4	44	1/2"

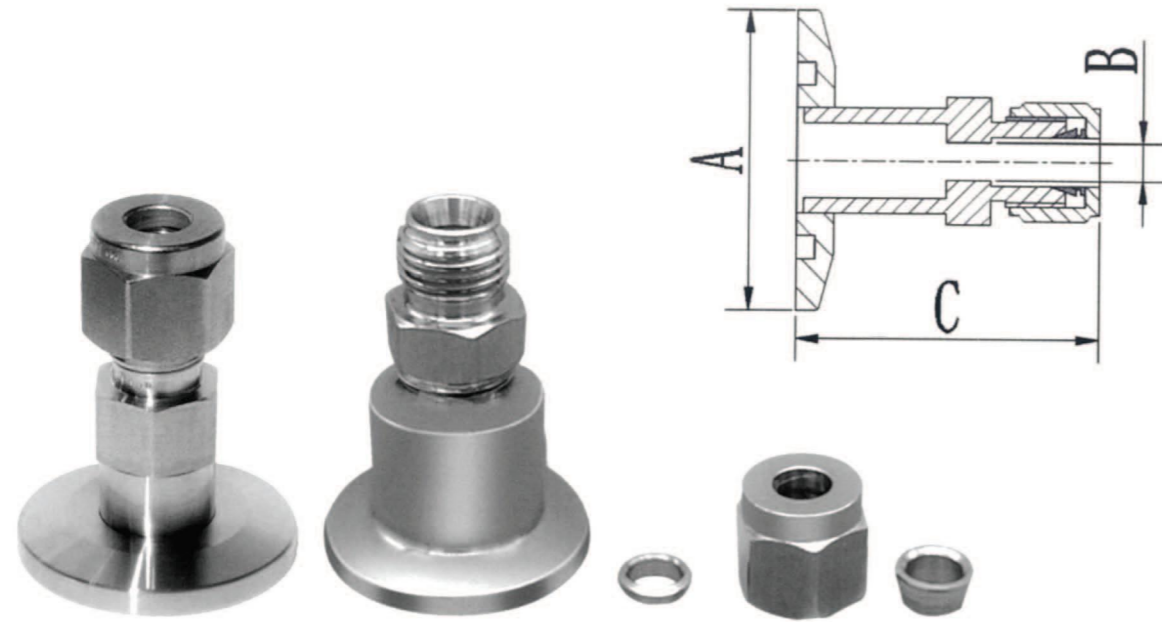
KF-VCR 母转换接头
KF VCR Female Adaptor



Material: 304, 304L, 316L, 316LN

Model No.	A	B	C	VCR
KF16FVCR6	30	4.4	44	1/4"
KF16FVCR13	30	10.4	46	1/2"
KF25FVCR6	40	4.4	44	1/4"
KF25FVCR13	40	10.4	46	1/2"
KF40FVCR6	55	4.4	44	1/4"
KF40FVCR13	55	10.4	46	1/2"
KF50FVCR6	75	4.4	44	1/4"
KF50FVCR13	75	10.4	46	1/2"

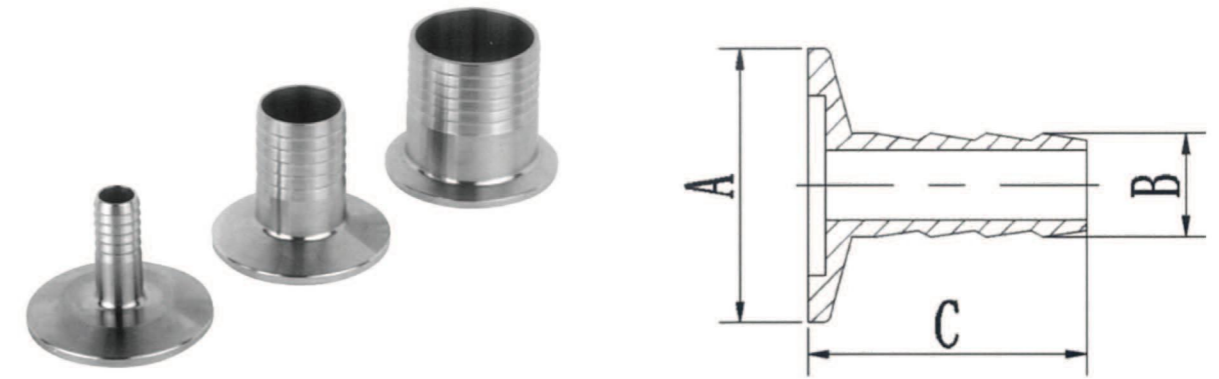
KF-卡套转换接头 KF Compression Adaptor



Material: 304, 304L, 316L, 316LN

Model No.	A	B	C	VCR
KF16SWA6	30	5	49	1/4"
KF16SWA13	30	11	49	1/2"
KF25SWA6	40	5	49	1/4"
KF25SWA13	40	11	49	1/2"
KF40SWA6	55	5	49	1/4"
KF40SWA13	55	11	49	1/2"
KF50SWA6	75	5	49	1/4"
KF50SWA13	75	11	49	1/2"

KF-皮管接头 KF Hose Adaptor

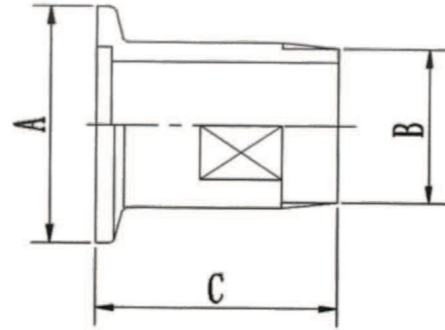


Material: 304, 304L, 316L, 316LN

Model No.	A	B	C	HOSE OD
KF10RHA8	30	8	40	8
KF10RHA10	30	10	40	10
KF16RHA6	30	6	40	6
KF16RHA8	30	8	40	8
KF16RHA10	30	10	40	10
KF16RHA13	30	13	40	13
KF16RHA16	30	16	40	16
KF16RHA20	30	20	40	20
KF25RHA6	40	6	40	6
KF25RHA8	40	8	40	8
KF25RHA10	40	10	40	10
KF25RHA13	40	13	40	13
KF25RHA16	40	16	40	16
KF25RHA20	40	20	40	20
KF25RHA25	40	25	40	25
KF40RHA16	55	16	40	16
KF40RHA20	55	20	40	20
KF40RHA25	55	25	40	25
KF40RHA32	55	32	40	32
KF40RHA40	55	40	40	40
KF50RHA25	75	25	40	25
KF50RHA50	75	50	40	50

KF-铣边外丝转换接头

KF to Male Adaptor

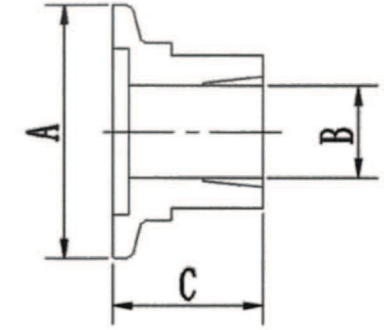


Material: 304, 304L, 316L, 316LN

Model No.	A	B	C	Size
KF16MPT1	30	9.5	40	1/8"PT
KF16MPT2	30	12.5	40	1/4"PT
KF16MPT3	30	16	40	3/8"PT
KF16MPT4	30	20	40	1/2"PT
KF25MPT2	40	12.5	40	1/4"PT
KF25MPT3	40	16	40	3/8"PT
KF25MPT4	40	20	40	1/2"PT
KF25MPT6	40	25.5	40	3/4"PT
KF25MPT10	40	32	40	1"PT
KF40MPT4	55	20	40	1/2"PT
KF40MPT6	55	25.5	40	3/4"PT
KF40MPT10	55	32	40	1"PT
KF40MPT12	55	40.5	40	1.2"PT
KF40MPT15	55	46	40	1.5"PT
KF50MPT15	75	46	40	1.5"PT
KF50MPT20	75	58	40	2"PT

KF-铣边内丝转换接头

KF to Female Adaptor



Material: 304, 304L, 316L, 316LN

Model No.	A	B	C	Size
KF16FPT1	30	8.8	25	1/8"PT
KF16FPT2	30	11.7	25	1/4"PT
KF16FPT3	30	15.2	25	3/8"PT
KF16FPT4	30	18.8	25	1/2"PT
KF16FPT14	30	12.5	25	M14*1.5
KF16FPT20	30	18.5	25	M20*1.5
KF25FPT2	40	11.7	25	1/4"PT
KF25FPT3	40	15.2	25	3/8"PT
KF25FPT4	40	18.8	25	1/2"PT
KF25FPT6	40	24.3	25	3/4"PT
KF25FPT10	40	30.5	25	1"PT
KF25FPT14	40	12.5	25	M14*1.5
KF25FPT20	40	18.5	25	M20*1.5
KF40FPT4	55	18.8	25	1/2"PT
KF40FPT6	55	15.2	25	3/4"PT
KF40FPT10	55	30.5	25	1"PT
KF40FPT12	55	39.2	25	1.2"PT
KF40FPT15	55	45.1	25	1.5"PT
KF50FPT15	75	45.1	25	1.5"PT
KF50FPT20	75	56.9	25	2"PT

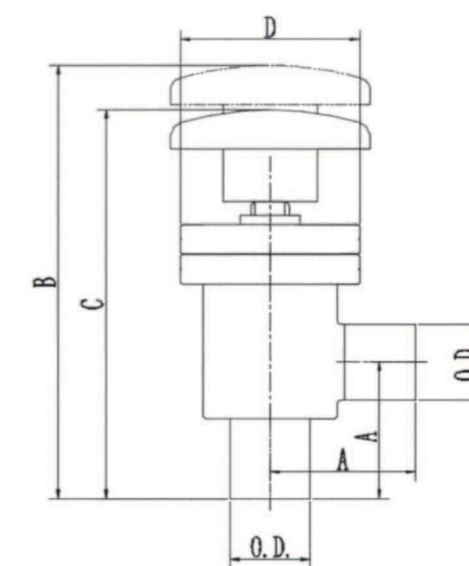
VALVE SERIES

EFUN



GD 手动角阀-接管

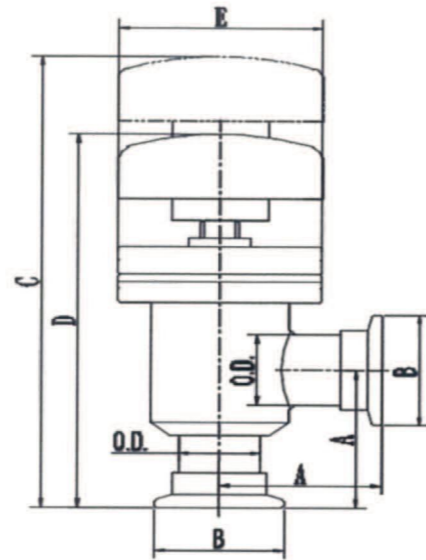
Manual Poppet Valve (Welded)



Model No.	Std	O.D.	A	B	C	D
GD-J16	USA	19.05	50.8	150	134	63
GD-J25	USA	25.4	47.75	147	131	63
GD-J40	USA	38.1	57.15	174	155	78
GD-J50	USA	50.8	82.55	220	200	88
GD-J63	USA	63.5	76.2	242.4	217.4	101.6
GD-J80	USA	76.2	82.55	273.4	243.4	114
GD-J16	EURO	19.05	36.2	139.2	123.2	63
GD-J25	EURO	25.4	46.2	149.2	133.2	63
GD-J40	EURO	38.1	61.2	181.7	162.7	78
GD-J50	EURO	50.8	66.2	207.4	187.4	88
GD-J63	EURO	63.5	81.5	254.2	229.2	101.6
GD-J80	EURO	76.2	91.5	288.9	258.9	114

KF 手动角阀 (L型)

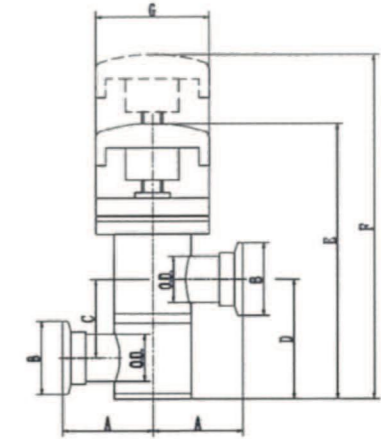
KF Manual Poppet Valve (L Type)



Model No.	Std	O.D.	A	B	C	D	E
GD-J16-KF	USA	19.05	50.8	30	153.8	137.8	63
GD-J25-KF	USA	25.4	47.75	40	150.8	134.8	63
GD-J40-KF	USA	38.1	57.2	55	177.7	158.7	78
GD-J50-KF	USA	50.8	82.6	75	223.8	203.8	88
GD-J63-KF	USA	63.5	76.2	87	246.2	221.2	101.6
GD-J80-KF	USA	76.2	82.6	114	279.9	249.9	114
GD-J16-KF	EURO	19.05	40	30	143	127	63
GD-J25-KF	EURO	25.4	50	40	153	137	63
GD-J40-KF	EURO	38.1	65	55	185.5	166.5	78
GD-J50-KF	EURO	50.8	70	75	211.2	191.2	88
GD-J63-KF	EURO	63.5	88	87	258	233	101.6
GD-J80-KF	EURO	76.2	98	114	295.4	265.4	114

手动Z型阀-KF

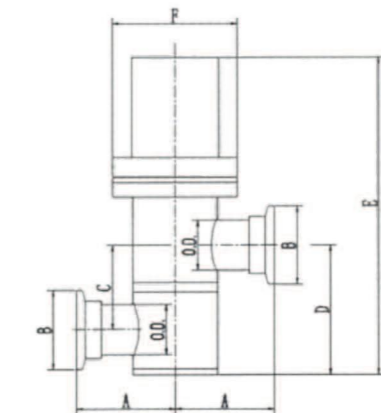
KF Manual Poppet Valve (Z Type)



Model No.	Std	O.D.	A	B	C	D	E	F	G
GD-Z16-KF	GB	19.05	40	30	28	48	135	154	63
GD-Z25-KF	GB	25.4	50	40	35	58	141	160	63
GD-Z40-KF	GB	38.1	65	55	48	77	178	197	78
GD-Z50-KF	GB	50.8	70	75	66	101	224	244	88

气动Z型阀-KF

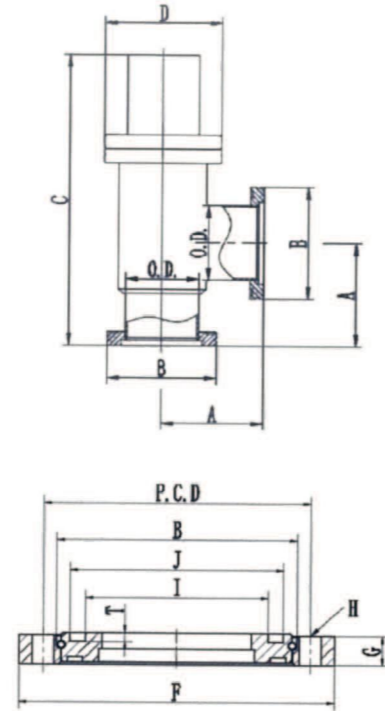
KF Pneumatic Poppet Valve (Z Type)



Model No.	Std	O.D.	A	B	C	D	E	F	G
GDQ-Z16-KF	GB	19.1	40	30	28	48	135	154	63
GDQ-Z25-KF	GB	25.4	50	40	35	58	141	160	63
GDQ-Z40-KF	GB	38.1	65	40	48	77	178	197	78
GDQ-Z50-KF	GB	50.8	70	75	66	101	224	244	88

GDQ 气动薄型角阀-ISO

GDQ Pneumatic thin angle valve - ISO



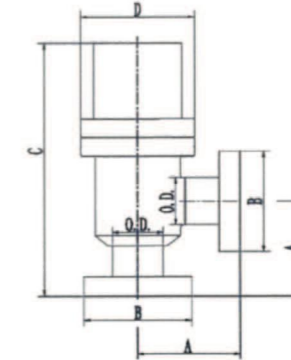
- 1、ISO法兰外面可加活套法兰，活套法兰尺寸见ISO活套法兰页。
- 2、法兰密封方式有附ISO中心支架和法兰面带密封圈槽两种，选其一。

Model No.	Std	O.D.	A	B	C	D
GDQ-J63-ISO	GB	63.5	88	95	247	101.6
GDQ-J80-ISO	GB	76.2	98	110	290	114
GDQ-J100-ISO	GB	101.6	108	130	334	145.8
GDQ-J160-ISO	GB	152.4	138	180	455	204
GDQ-J200-ISO	GB	204	200	240	609	254
GDQ-J250-ISO	GB	254	208	290	737	306

Flange Size	F	G	H*No	P.C.D	I	J	T
ISO63	130	12	9*4	110	75	87.6	3.7
ISO80	145	12	9*8	125	88.5	101.1	3.7
ISO100	165	12	9*8	145	107.5	120.1	3.7
ISO160	225	16	11*8	200	160	172.8	3.7
ISO200	285	16	11*8	260	224	236.6	3.7
ISO250	335	16	11*8	310	266	278.6	3.7

GDQ 气动薄型角阀-CF

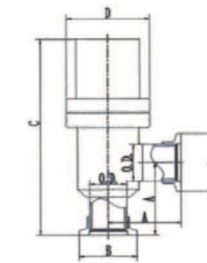
GDQ Pneumatic thin angle valve - CF



Model No.	O.D.	A	B	C	D
GDQ-J16-CF	19.05	54.1	34	160.1	63
GDQ-J25-CF	25.4	52.8	54	145.2	63
GDQ-J35-CF	38.1	62.7	70	177.3	78
GDQ-J50-CF	50.8	90.6	86	218.5	88
GDQ-J63-CF	63.5	85.7	114	240.9	101.6
GDQ-J80-CF	76.2	92.6	130	277.8	114

GDQ 气动圆缸角阀-KF

GDQ Pneumatic Cylinder Angle Valve - KF

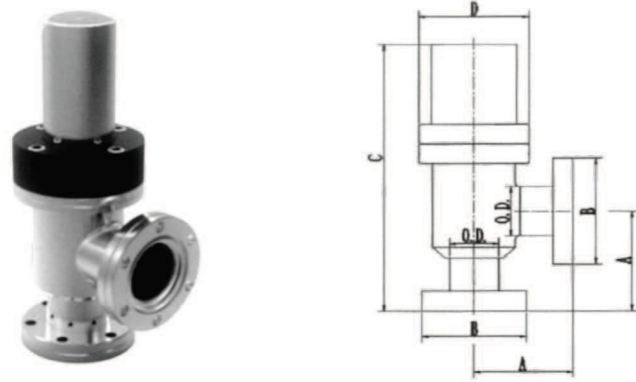


Model No.	Std	O.D.	A	B	C	D
GDQ-J16-KF	USA	19.05	50.8	30	154.1	63
GDQ-J25-KF	USA	25.4	47.75	40	157.45	63
GDQ-J40-KF	USA	38.1	57.15	55	198.35	78
GDQ-J50-KF	USA	50.8	82.55	75	277.75	88

GDQ-J16-KF	EURO	19.05	40	30	143.3	63
GDQ-J25-KF	EURO	25.4	50	40	157.7	63
GDQ-J40-KF	EURO	38.1	65	55	206.2	78
GDQ-J50-KF	EURO	50.8	70	75	265.2	88

GDQ 气动圆缸角阀-CF

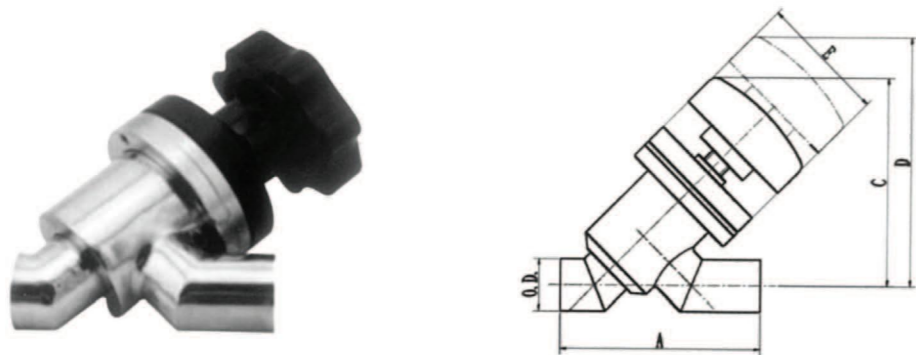
GDQ Pneumatic cylinder angle valve - CF



Model No.	O.D.	A	B	C	D
GDQ-J16-CF	19.05	54.1	34	154.6	63
GDQ-J25-CF	25.4	52.8	54	158.9	63
GDQ-J35-CF	38.1	62.7	70	207.9	78
GDQ-J50-CF	50.8	90.6	86	282.0	88

GD 手动角阀 (Y型) -接管

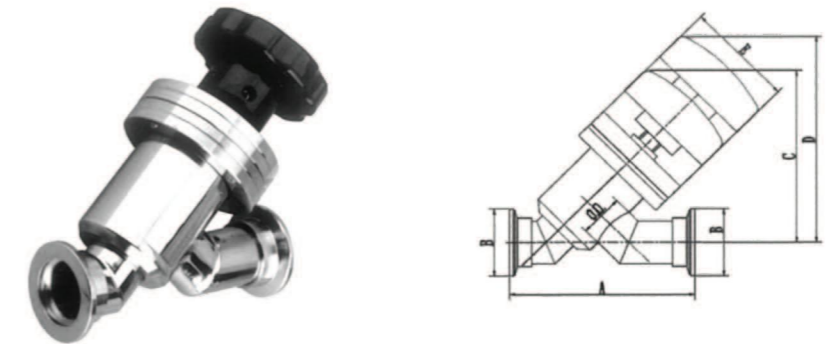
GD Welded Manual Poppet Valve (Y Type)



Model No.	Std	O.D.	A	C	D	E
GD-Y16	USA	19.05	94	102.4	109.5	63
GD-Y25	USA	25.4	99.1	102.4	109.5	63
GD-Y40	USA	38.1	122.4	121.7	132.3	78
GD-Y50	USA	50.8	170.2	142.8	156.9	88

KF 手动角阀 (Y型)

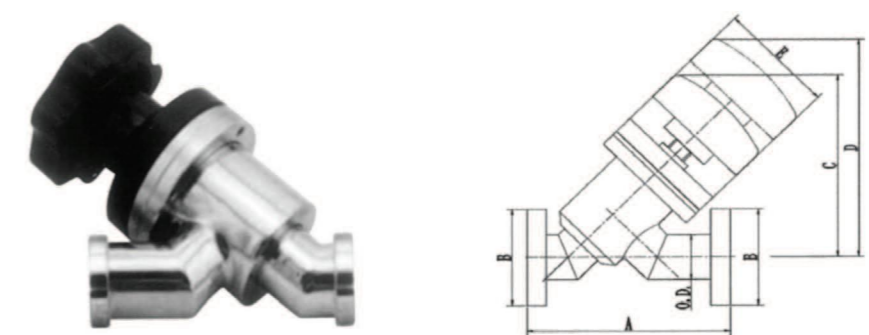
KF Manual Poppet Valve (Y Type)



Model No.	Std	O.D.	A	B	C	D	E
GD-Y16-KF	USA	19.05	101.6	30	102.4	109.5	63
GD-Y25-KF	USA	25.4	106.7	40	102.4	109.5	63
GD-Y40-KF	USA	38.1	130.0	55	121.7	132.3	78
GD-Y50-KF	USA	50.8	177.8	75	142.8	156.9	88

CF 手动角阀 (Y型)

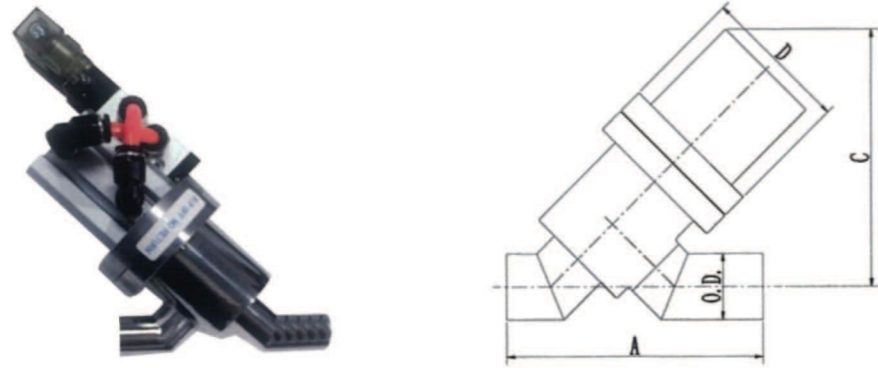
CF Manual Poppet Valve (Y Type)



Model No.	O.D.	A	B	C	D	E
GD-Y16-CF	19.05	102.6	34	102.4	109.5	63
GD-Y25-CF	25.4	109.1	54	102.4	109.5	63
GD-Y40-CF	38.1	133.4	70	121.7	132.3	78
GD-Y50-CF	50.8	186.2	86	142.8	156.9	88

GDQ 气动薄型Y型阀-接管

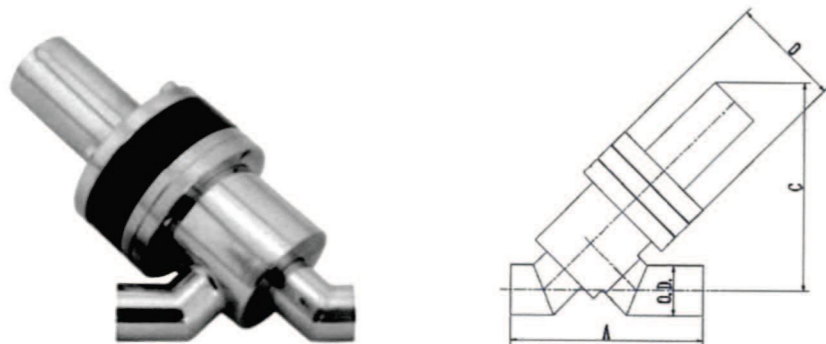
GDQ Welded Thin Pneumatic Poppet Valve (Y Type)



Model No.	Std	O.D.	A	C	D
GDQ-Y16	USA	19.05	94	99.1	63
GDQ-Y25	USA	25.4	99.1	99.1	63
GDQ-Y40	USA	38.1	122.4	136.2	78
GDQ-Y50	USA	50.8	170.2	154	88

GDQ 气动圆缸Y型阀-接管

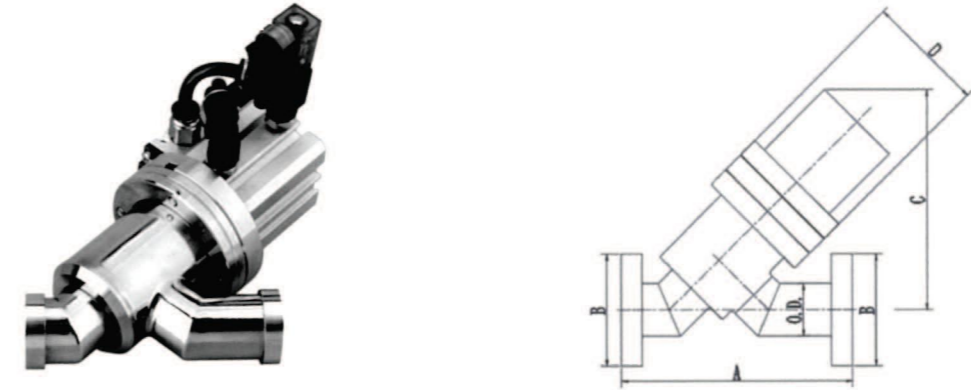
GDQ Cylinder Pneumatic Poppet Valve (Y Type)



Model No.	Std	O.D.	A	C	D
GDQ-Y16	USA	19.05	94	107.4	63
GDQ-Y25	USA	25.4	99.1	107.4	63
GDQ-Y40	USA	38.1	122.4	148.9	78
GDQ-Y50	USA	50.8	170.2	184.7	88

CF 气动薄型Y型阀

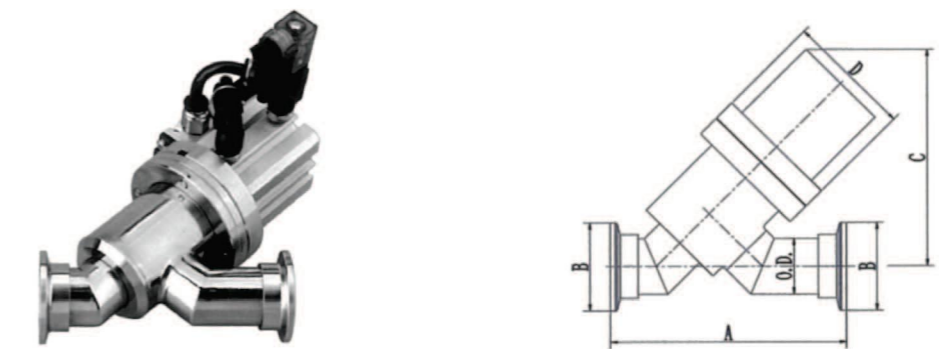
CF Thin Pneumatic Poppet Valve (Y Type)



Model No.	O.D.	A	B	C	D
GDQ-Y16-CF	19.05	102.6	34	99.1	63
GDQ-Y25-CF	25.4	109.1	54	99.1	63
GDQ-Y40-CF	38.1	133.40	70	136.2	78
GDQ-Y50-CF	50.8	186.20	86	154	88

KF 气动薄型Y型阀

KF Thin Pneumatic Poppet Valve (Y Type)



Model No.	Std	O.D.	A	B	C	D
GDQ-Y16-KF	USA	19.05	101.6	30	99.1	63
GDQ-Y25-KF	USA	25.4	106.7	40	99.1	63
GDQ-Y40-KF	USA	38.1	130.0	55	136.2	78
GDQ-Y50-KF	USA	50.8	177.8	75	154	88

KF 气动圆缸Y型阀

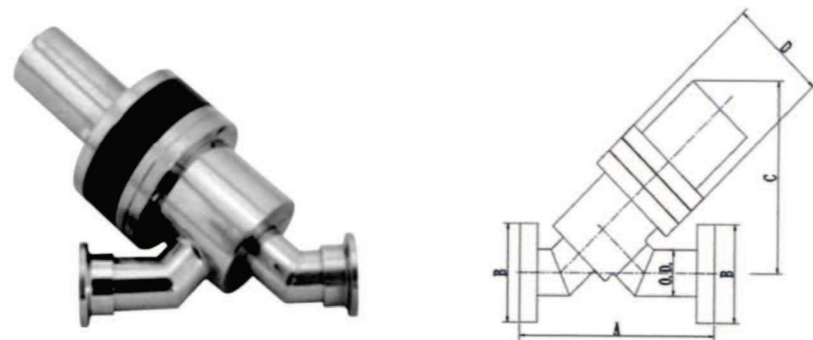
KF Cylinder Pneumatic Poppet Valve (Y Type)



Model No.	Std	O.D.	A	B	C	D
GDQ-Y16-KF	USA	19.05	101.6	30	107.4	63
GDQ-Y25-KF	USA	25.4	106.7	40	107.4	63
GDQ-Y40-KF	USA	38.1	130.0	55	148.9	78
GDQ-Y50-KF	USA	50.8	177.8	75	184.7	88

CF 气动圆缸Y型阀

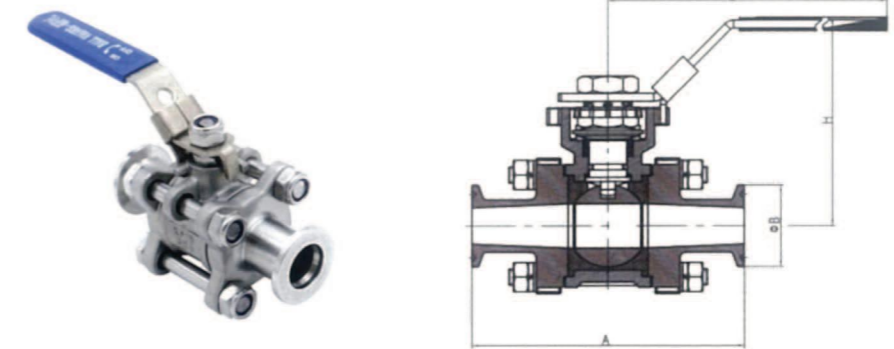
CF Cylinder Pneumatic Poppet Valve (Y Type)



Model No.	O.D.	A	B	C	D
GDQ-Y16-CF	19.05	102.6	34	107.4	63
GDQ-Y25-CF	25.4	109.1	54	107.4	63
GDQ-Y40-CF	38.1	133.40	70	148.9	78
GDQ-Y50-CF	50.8	186.20	86	184.7	88

KF 手动球阀

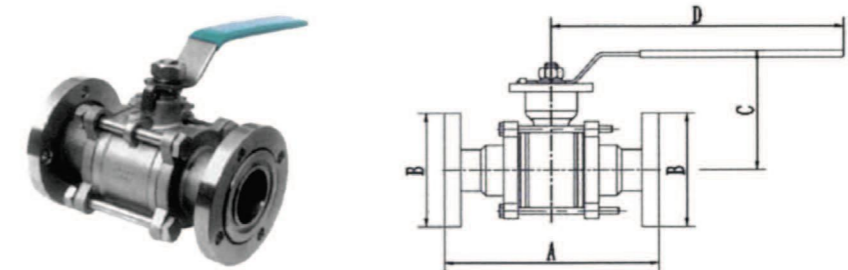
Manual Ball Valve KF



Model No.	A	B	H	L
GU-16-KF	100	30	62	120
GU-25-KF	114	40	75	150
GU-40-KF	165	55	115	200
GU-50-KF	175	75	125	221

手动球阀法兰型

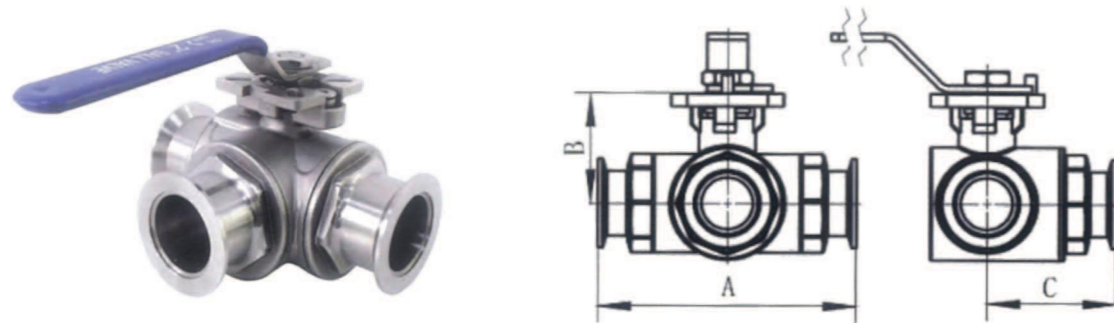
Manual Ball Valve Flange Type



Model No.	A	B	C	D	n-h
GU-10F	84	55	52	105	4-6.5
GU-16F	84	60	64	130	4-6.5
GU-25F	114	70	83	165	4-6.5
GU-32F	140	90	89	165	4-9
GU-40F	160	100	100	190	4-9
GU-50F	170	110	125	190	4-9
GU-63F	195	130	150	250	4-9
GU-80F	203	145	161	250	8-9
GU-100F	280	165	180	280	8-9
GU-125F	300	200	232	360	8-11
GU-150F	330	225	250	400	8-11
GU-200F	390	285	306	620	12-12

手动三通球阀-KF

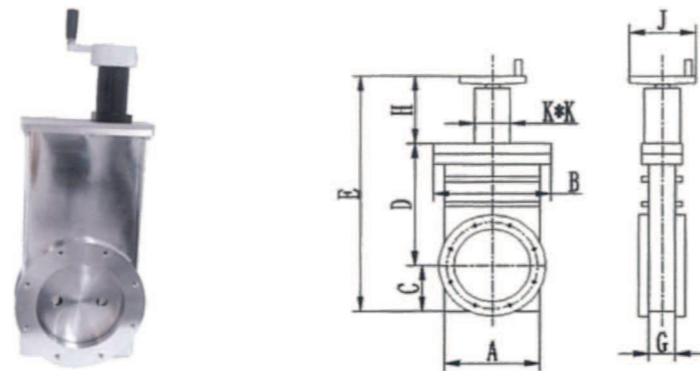
Manual Three Way Ball Valve KF



Model No.	A	B	C
GU-25-KF	110	50	55
GU-40-KF	160	68	80
GU-50-KF	165	120	83

手动插板阀

Manual Gate Valve



Model No.	A	B	C	D	E	F	G	H	I	J	K
CC-63B	110	130	52	173	378	64	34	153	56	100	64
CC-80B	130	140	57	228	462	75	36	177	69	100	75
CC-100B	151	178	75	228	487	75	36	184	69	100	75
CC-160B	201	228	96	302	605	75	41	207	69	100	75
CC-200B	248	276	120	380	714	75	42	214	69	125	75
CC-250B	310	342	146	463	875	80	48	266	70	125	80

手动放气阀

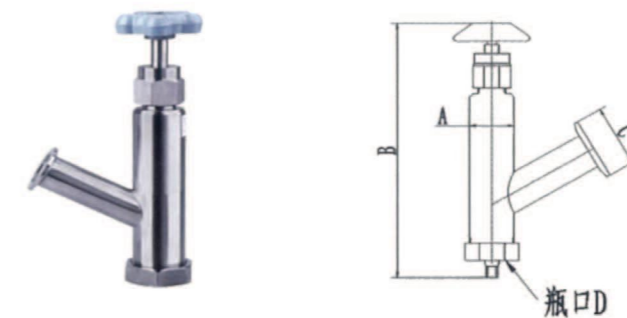
Manual Air Release Valve



Model No.	A	B	C	D
GD-Q16	30	17.2	26	39
GD-Q25	40	26.2	26	39
GD-Q40	55	41.2	26	39

真空推拉阀

Manual Push-Pull Valve

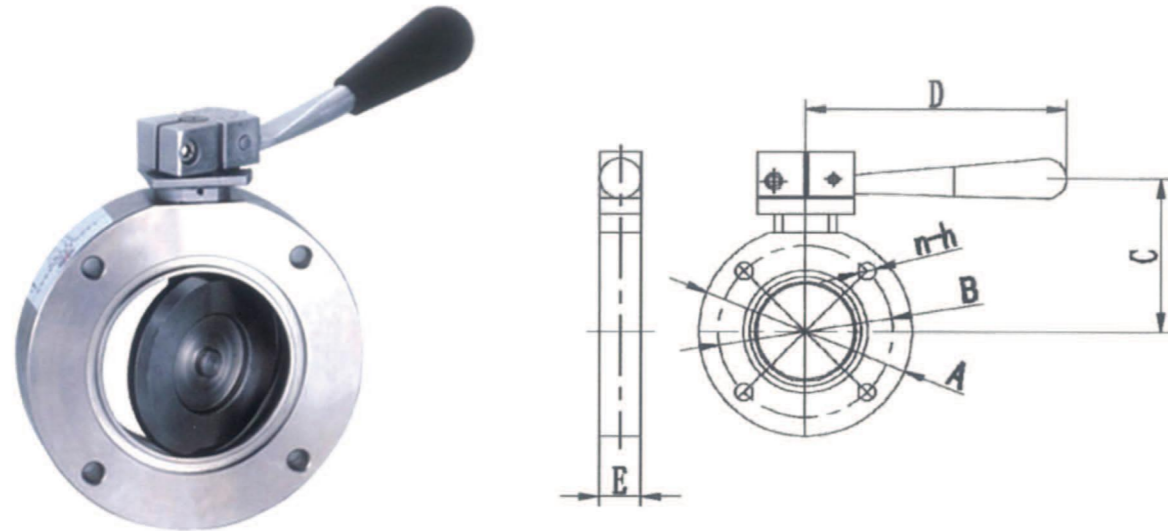


ThreadType: M10*1.5、M8*1.25、M6*1

Model No.	A	B	C	D
TI30	38	227	40/55	30
TL32	45	227	40/55	32
TL33	45	227	40/55	33
TL34	45	227	40/55	34
TL35	45	227	40/55	35
TL36	45	227	40/55	36
TI40	48	227	40/55	40

GI 手动蝶阀

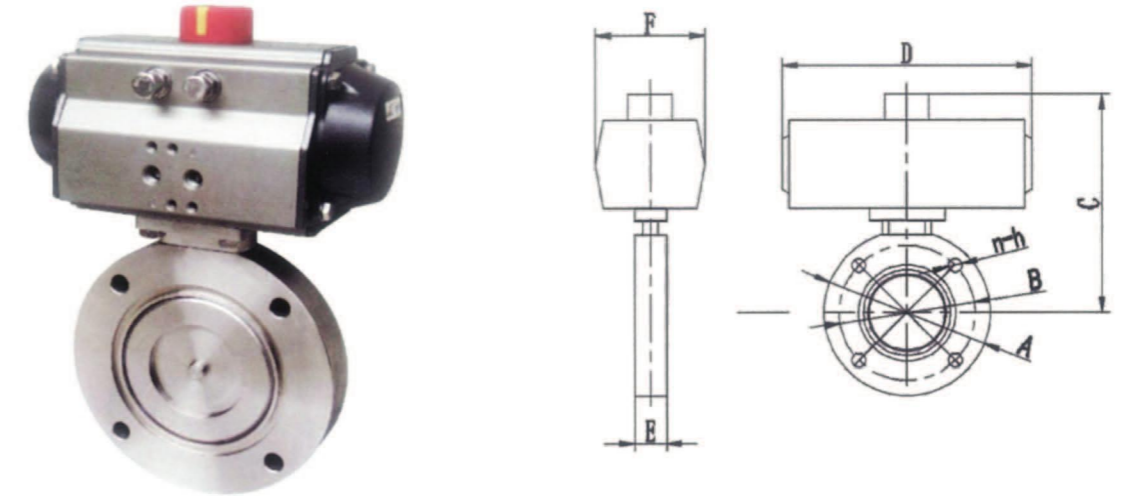
GI Manual Butterfly Valve



Model No.	A	B	C	D	E	n-h
GI-25	70	55	64	104	22	4-7
GI-32	78	64	68	104	22	4-7
GI-40	85	70	72	116	22	4-7
GI-50	110	90	85	116	22	4-9
GI-63	125	105	94	132	26	4-9
GI-80	145	125	108	154	30	4-9
GI-100	170	145	120	154	30	4-12
GI-125	195	170	136	197	35	4-12
GI-160	220	195	150	197	35	8-12
GI-200	275	250	185	242	40	8-12
GI-250	330	300	219	330	45	8-14
GI-300	380	350	245	330	55	8-14
GI-400	500	465	312	435	60	8-18

GIQ 气动蝶阀

GIQ Pneumatic Butterfly Valve



Model No.	A	B	C	D	E	F	n-h
GIQ-25	70	55	152	168	22	92	4-7
GIQ-32	78	64	156	168	22	92	4-7
GIQ-40	85	70	159	168	22	92	4-7
GIQ-50	110	90	181	168	22	92	4-9
GIQ-63	125	105	207	168	26	92	4-9
GIQ-80	145	125	230	204	30	105	4-9
GIQ-100	170	145	242	204	30	105	4-12
GIQ-125	195	170	288	204	35	105	4-12
GIQ-160	220	195	299	268	35	140	8-12
GIQ-200	275	250	348	298	40	168	8-12
GIQ-250	330	300	419	458	45	200	8-14
GIQ-300	380	350	475	525	55	231	8-14
GIQ-400	500	465	557	532	60	251	8-18
GIQ-500	600	565	650	722	80	324	12-18
GIQ-600	710	670	728	742	100	354	12-21
GIQ-800	920	880	882	860	130	410	20-21